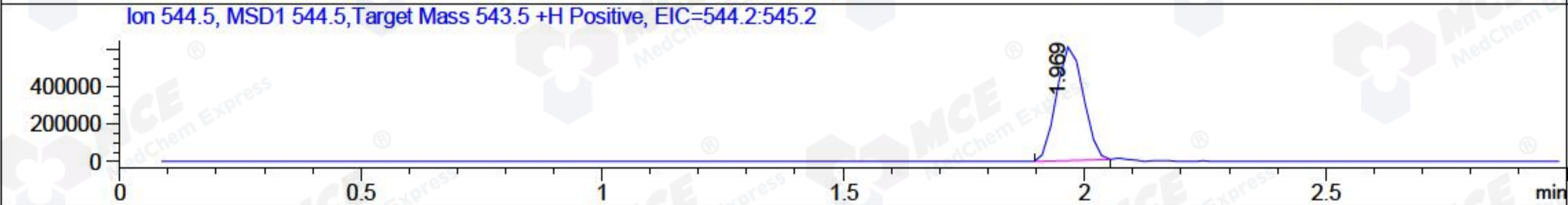
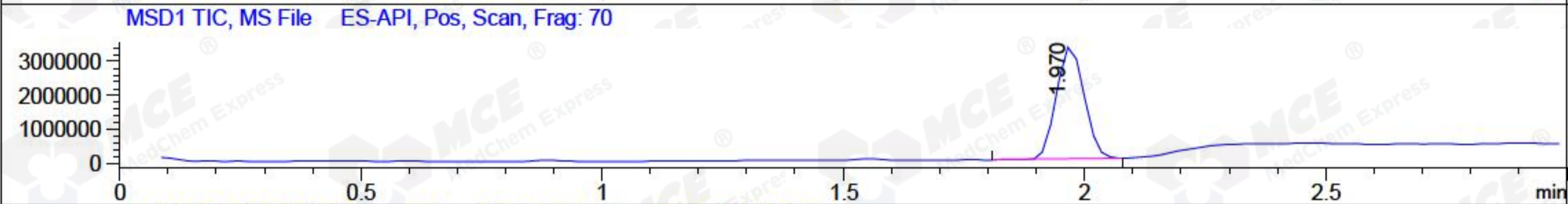
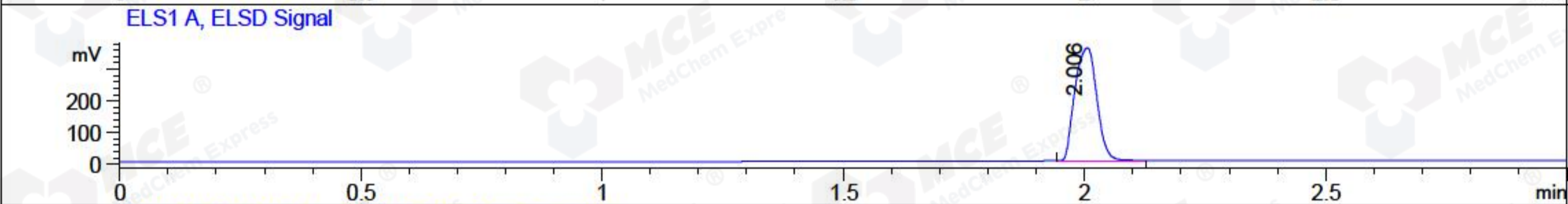
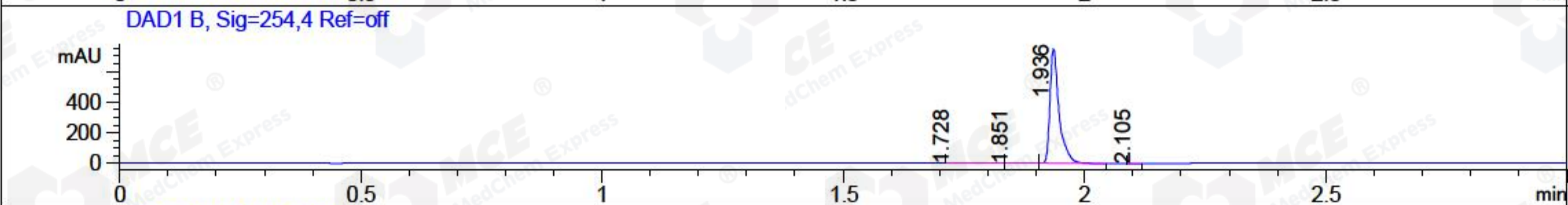
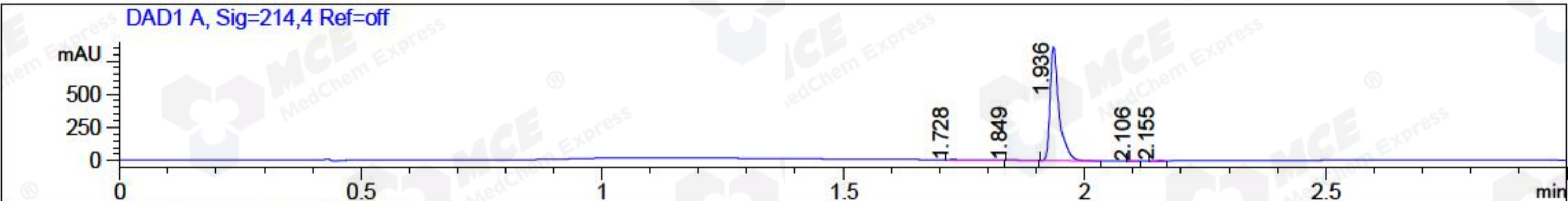


File ..ata\20171207\20171207-1\CPK2017-D07-08402.D Tgt Mass (CHM):
 Injection Date : 7 Dec 17 8:17 pm +0800 Seq. Line : 128
 Sample Name : CPK2017-D07-08402 Location : P1-E-06
 Acq. Operator : ZLJ_587 Inj : 1
 Spec. Reported : MS Integration Inj Volume : 1 ul
 Acq. Method : D:\LCMS03\Data\20171207\20171207-1\1-POS-3MIN.M
 Analysis Method : D:\LCMS03\Data\20171207\20171207-1\1-POS-3MIN.M
 Catalog No : HY-10809 Batch#08402
 Method Info : Mobile Phase: A: water(0.01%TFA) B:ACN(0.01%TFA)
 Gradient: 5% to 95%B within 1.3 min
 Flow Rate :1.8ml/min
 Column :SunFire C18, 4.6*50mm,3.5um A-RP-186
 Oven Temperature : 45C



Integration Results for DAD1 A, Sig=214,4 Ref=off

RetTim	Width	Area	Height	Area%	MS (+)
1.73	0.02	4.24	2.69	0.37	233
1.85	0.02	1.49	0.85	0.13	544
1.94	0.02	1131.43	857.11	99.41	544
2.11	0.01	0.14	0.16	0.01	233
2.15	0.02	0.81	0.72	0.07	105

Integration Results for DAD1 B, Sig=254,4 Ref=off

RetTim	Width	Area	Height	Area%	MS (+)
1.73	0.04	0.79	0.24	0.08	233
1.85	0.02	1.53	0.92	0.16	233
1.94	0.02	980.55	742.90	99.75	544
2.11	0.01	0.14	0.16	0.01	233

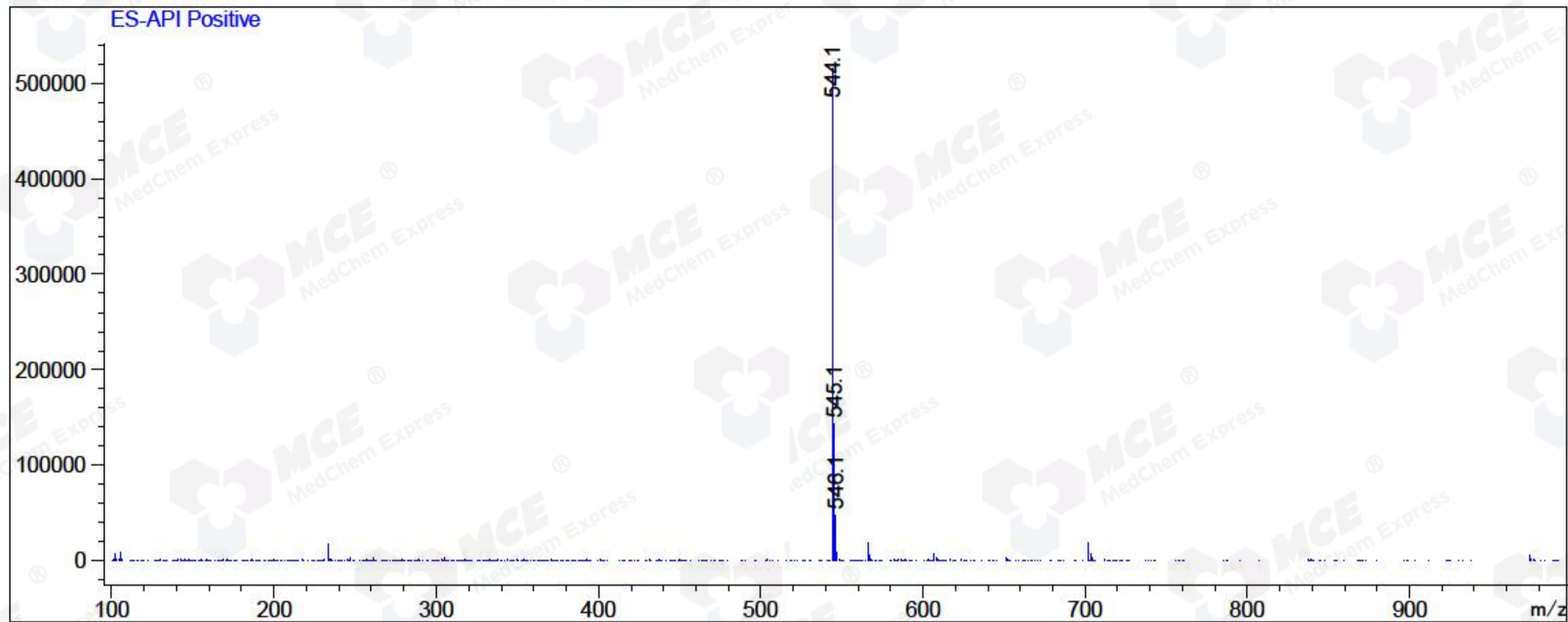
Integration Results for MSD1 TIC, MS File

RetTim	Width	Area	Height	Area%	MS (+)
--------	-------	------	--------	-------	--------

1.97 0.06 13019488.00 3305349.00 100.00 544

Ret. Time: 1.97

<<<< POSITIVE SPECTRA >>>>



*** End of Report ***