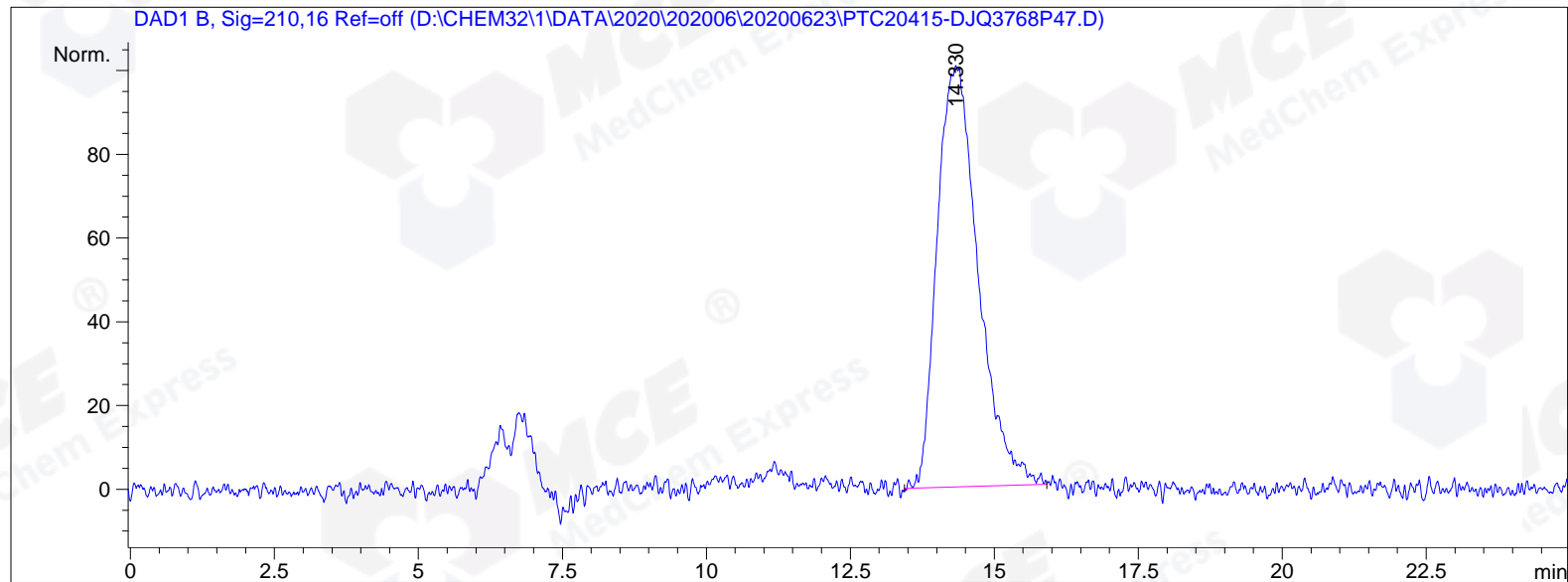


```

=====
Acq. Operator   : MJQ                               Seq. Line :    3
Acq. Instrument : Instrument 1                       Location  : Vial 59
Injection Date  : 6/23/2020 4:44:23 PM             Inj       :    1
                                                Inj Volume: 2 µl
Different Inj Volume from Sequence !      Actual Inj Volume : 5 µl
Acq. Method     : D:\CHEM32\1\METHODS\AD-H\50HEX 50ETOH 05MLMIN HAC.M
Last changed    : 6/23/2020 4:43:02 PM by MJQ
                  (modified after loading)
Analysis Method : D:\CHEM32\1\METHODS\AD-H\80HEX 20ETOH 08MLMIN DEA.M
Last changed    : 6/18/2020 10:28:07 AM by MJQ
                  (modified after loading)
Catalog No     : HY-108337
=====

```



```

=====
                          Area Percent Report
=====

```

```

Sorted By       :      Signal
Multiplier      :      1.0000
Dilution        :      1.0000
Use Multiplier & Dilution Factor with ISTDs

```

Signal 1: DAD1 B, Sig=210,16 Ref=off

Peak #	RetTime [min]	Type	Width [min]	Area [mAU*s]	Height [mAU]	Area %
1	14.330	MM R	0.8259	4991.50342	100.72862	100.0000

Totals : 4991.50342 100.72862

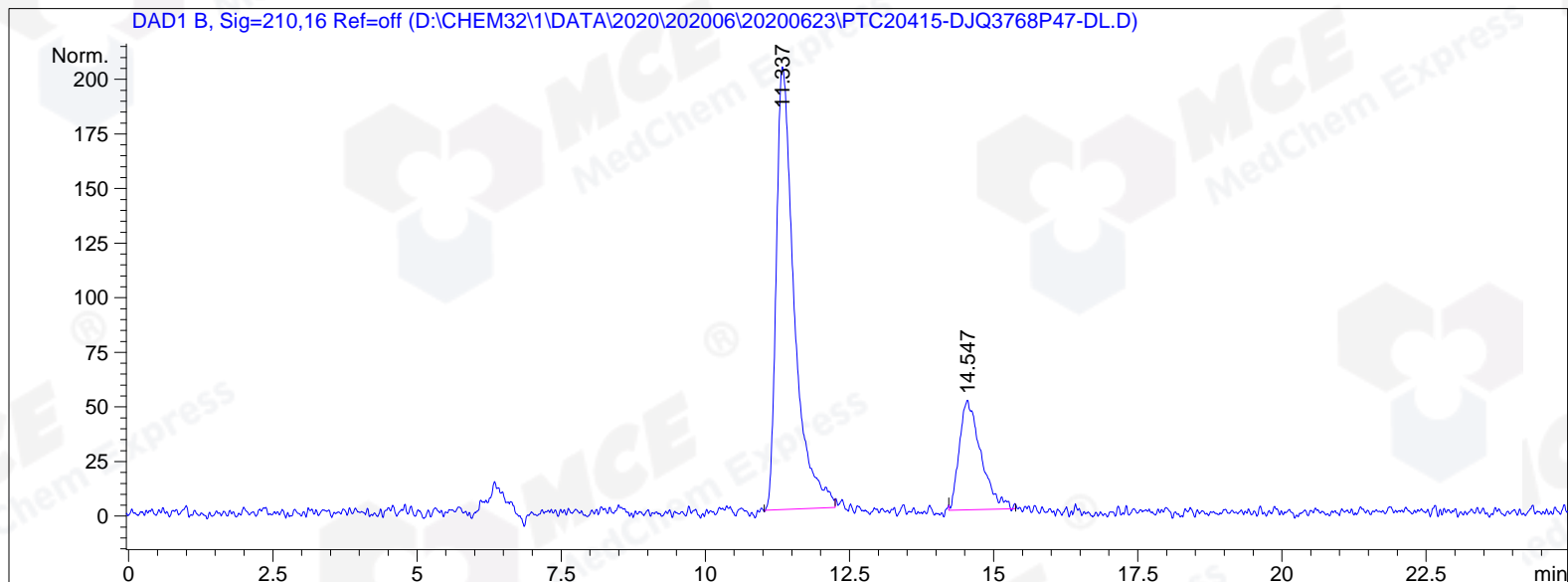
*** End of Report ***

```
=====
Acq. Operator   : MJQ                      Seq. Line :    4
Acq. Instrument : Instrument 1              Location  : Vial 60
Injection Date  : 6/23/2020 5:11:10 PM      Inj       :    1
                                           Inj Volume: 2 µl

Acq. Method    : D:\CHEM32\1\METHODS\AD-H\50HEX 50ETOH 05MLMIN HAC.M
Last changed   : 6/23/2020 4:43:02 PM by MJQ
                (modified after loading)

Analysis Method : D:\CHEM32\1\METHODS\AD-H\80HEX 20ETOH 08MLMIN DEA.M
Last changed   : 6/18/2020 10:28:07 AM by MJQ
                (modified after loading)

Catalog No     : HY-108337
=====
```



```
=====
                          Area Percent Report
=====
```

```
Sorted By      :      Signal
Multiplier     :      1.0000
Dilution       :      1.0000
Use Multiplier & Dilution Factor with ISTDs
```

Signal 1: DAD1 B, Sig=210,16 Ref=off

Peak #	RetTime [min]	Type	Width [min]	Area [mAU*s]	Height [mAU]	Area %
1	11.337	MM R	0.3619	4402.58643	202.78122	77.0544
2	14.547	MM R	0.4346	1311.02502	50.28038	22.9456

```
Totals :                    5713.61145   253.06160
```

```
=====
*** End of Report ***
```