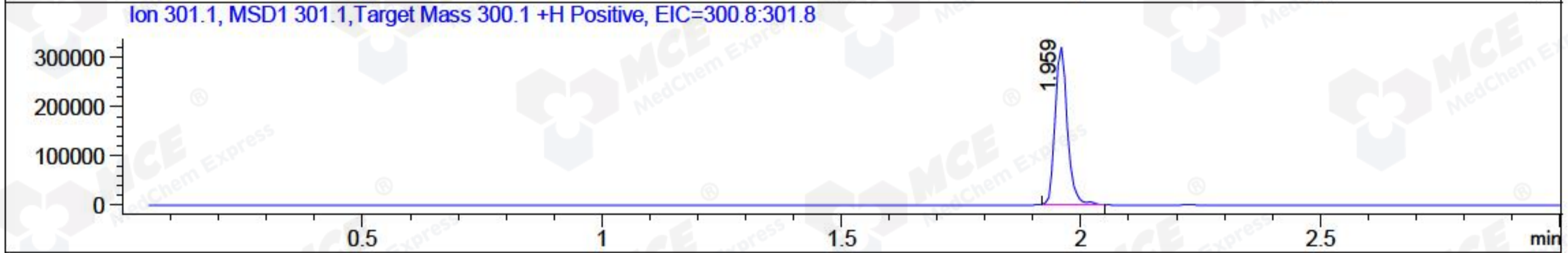
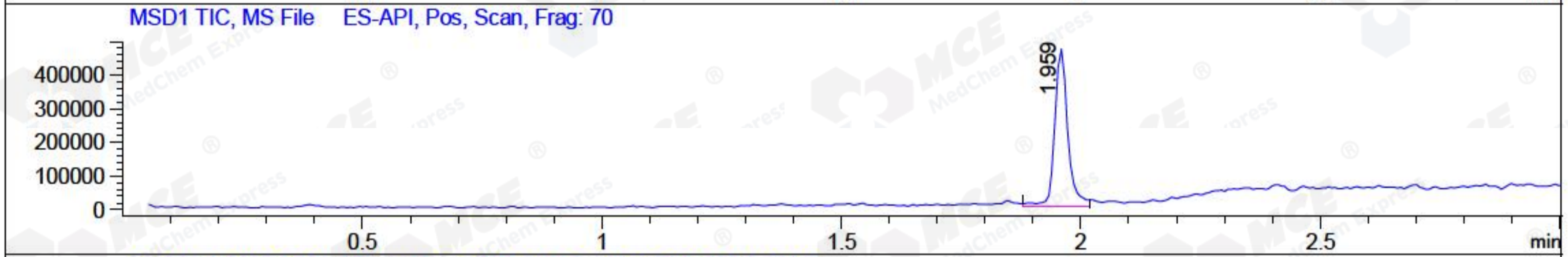
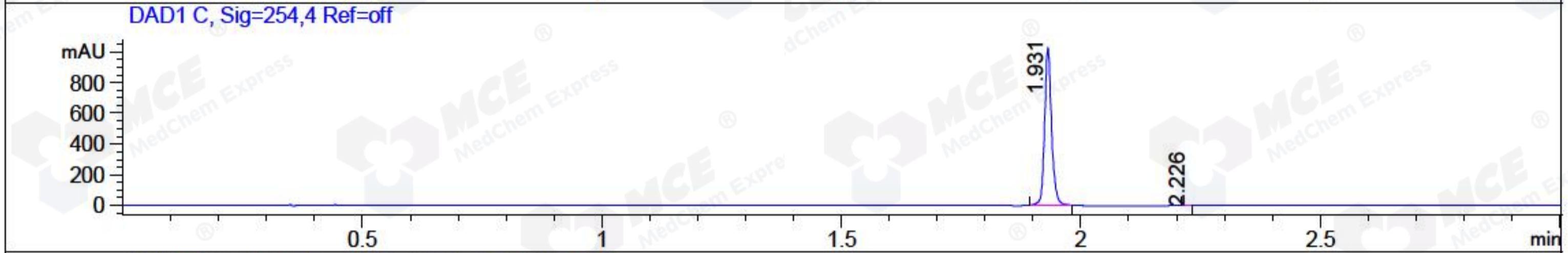
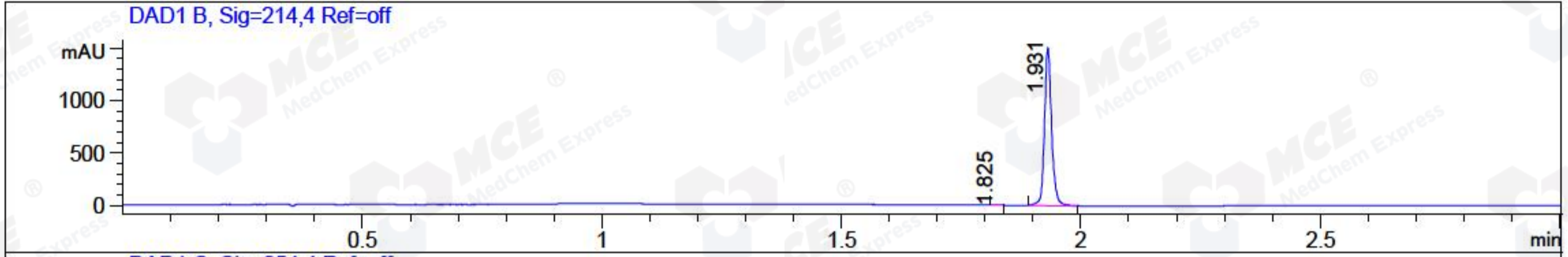


File ..1\DATA\2018\20181105\484\BIZ2018-N05-CXL4.D Tgt Mass (CHM):
 Injection Date : 5 Nov 18 5:27 pm +0800 Seq. Line : 26
 Sample Name : BIZ2018-N05-CXL4 Location : P2-E-04
 Acq. Operator : LQ_1052 Inj : 1
 Spec. Reported : MS Integration Inj Volume : 1 ul
 Acq. Method : D:\Chem32\1\data\2018\20181105\484\1-POS-3MIN-1.M
 Analysis Method : D:\CHEM32\1\DATA\2018\20181105\484\1-POS-3MIN-1.M
 Catalog No : HY-10836 Batch#33993 BY MEOH A-RP-314
 Method Info : Mobile Phase: A: water(0.01%TFA) B:ACN(0.01%TFA)
 Gradient: 5% to 95%B within 1.3 min
 Flow Rate :1.8ml/min
 Column :SunFire C18, 4.6*50mm,3.5um A-RP-314
 Oven Temperature : 45□



Integration Results for DAD1 B, Sig=214,4 Ref=off

RetTim	Width	Area	Height	Area%	MS (+)
1.83	0.01	0.96	1.11	0.06	141
1.93	0.02	1570.55	1505.03	99.94	301

Integration Results for DAD1 C, Sig=254,4 Ref=off

RetTim	Width	Area	Height	Area%	MS (+)
1.93	0.02	1058.03	1028.02	99.97	301
2.23	0.02	0.28	0.27	0.03	141

Integration Results for MSD1 TIC, MS File

RetTim	Width	Area	Height	Area%	MS (+)
1.96	0.03	901026.44	469952.72	100.00	301

Ret. Time: 1.96

<<<< POSITIVE SPECTRA >>>>

ES-API Positive

