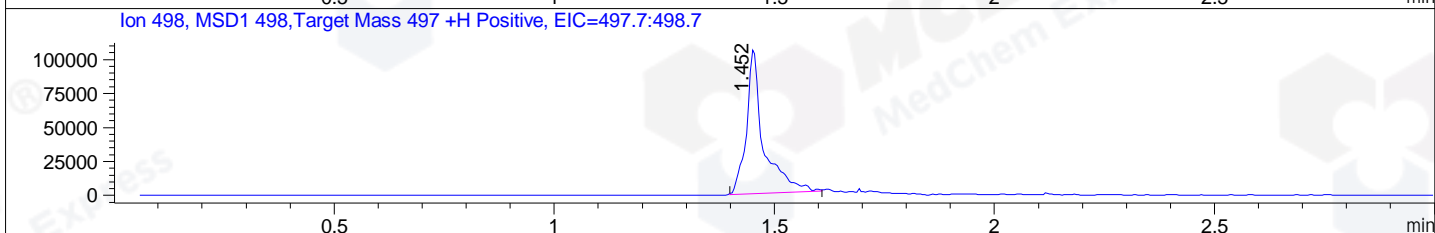
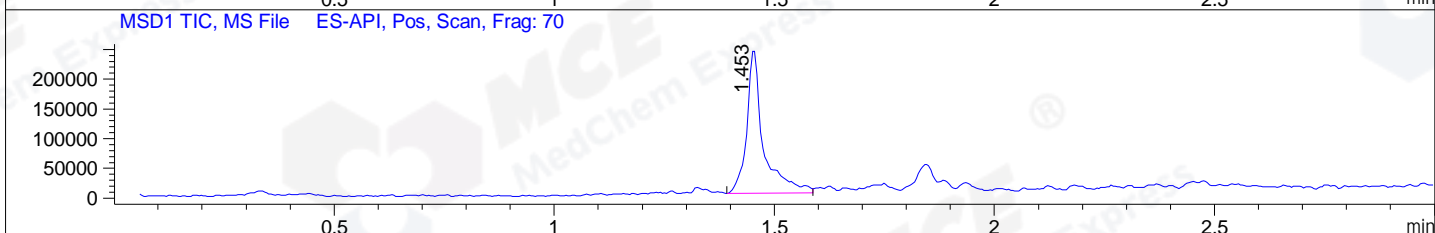
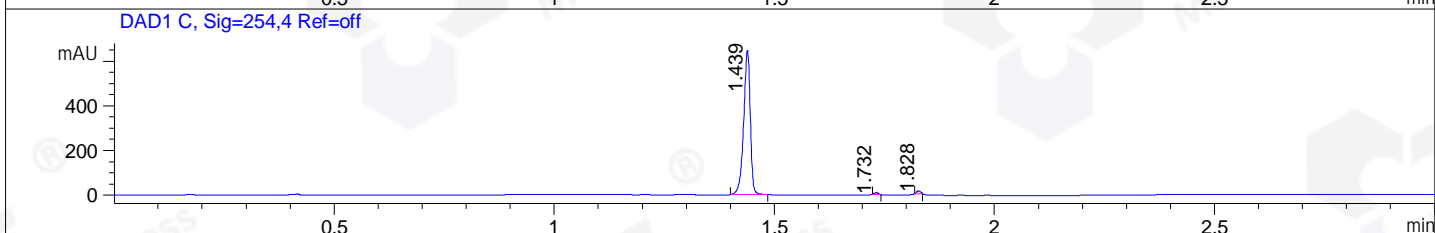
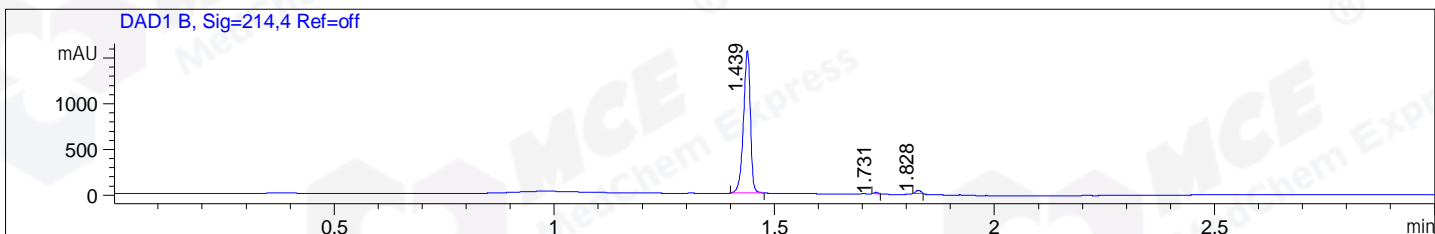


File ..DATA\2020\20200905\1099\BIZ2020-904-SCH10.D Tgt Mass (CHM):
 Injection Date : 5 Sep 20 11:19 am +0800 Seq. Line : 29
 Sample Name : BIZ2020-904-SCH10 Location : P1-C-06
 Acq. Operator : zyj_1547 Inj : 1
 Spec. Reported : MS Integration Inj Volume : 1 ul
 Acq. Method : D:\Chem32\1\data\2020\20200905\1099\1-POS-3MIN.M
 Analysis Method : D:\CHEM32\1\DATA\2020\20200905\1099\1-POS-3MIN.M
 Catalog No : HY-109016
 Method Info : Mobile Phase: A: water(0.01%TFA) B:ACN(0.01%TFA)
 Gradient: 5% to 95%B within 1.3 min
 Flow Rate :1.8ml/min
 Column :SunFire C18, 4.6*50mm,3.5um A-RP-607
 Oven Temperature : 45C



Integration Results for DAD1 B, Sig=214,4 Ref=off

RetTim	Width	Area	Height	Area%	MS (+)
1.44	0.02	1694.20	1561.20	98.02	498
1.73	0.01	8.82	13.53	0.51	498
1.83	0.01	25.49	34.77	1.47	283

Integration Results for DAD1 C, Sig=254,4 Ref=off

RetTim	Width	Area	Height	Area%	MS (+)
1.44	0.02	676.74	647.55	98.08	498
1.73	0.01	4.19	7.07	0.61	498
1.83	0.01	9.03	13.03	1.31	283

Integration Results for MSD1 TIC, MS File

RetTim	Width	Area	Height	Area%	MS (+)
1.45	0.04	631620.94	243477.05	100.00	498

Ret. Time: 1.45

<<<< POSITIVE SPECTRA >>>>

ES-API Positive

