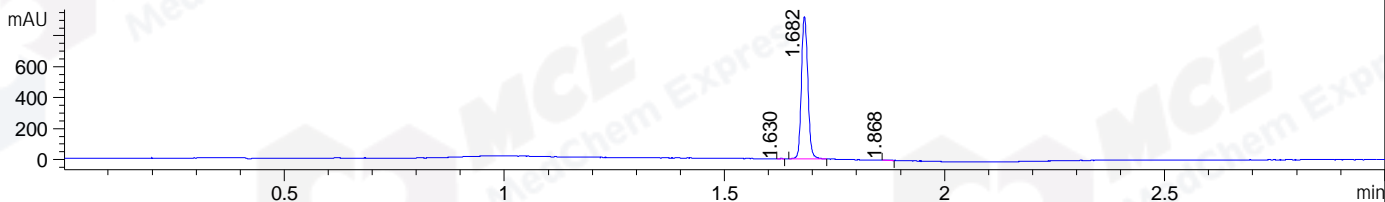
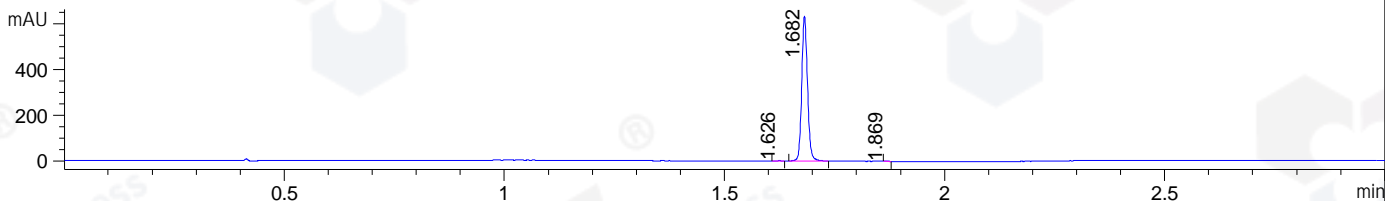


File ..\DATA\2020\20200730\1058\BIZ2020-728-WLQ4.D Tgt Mass (CHM):
 Injection Date : 30 Jul 20 11:43 am +0800 Seq. Line : 35
 Sample Name : BIZ2020-728-WLQ4 Location : P1-A-04
 Acq. Operator : ZJ_1432 Inj : 1
 Spec. Reported : MS Integration Inj Volume : 1 ul
 Acq. Method : D:\Chem32\1\data\2020\20200730\1058\1-POS-3MIN.M
 Analysis Method : D:\CHEM32\1\DATA\2020\20200730\1058\1-POS-3MIN.M
 Catalog No : HY-109030
 Method Info : Mobile Phase: A: water(0.01%TFA) B:ACN(0.01%TFA)
 Gradient: 5% to 95%B within 1.3 min
 Flow Rate :1.8ml/min
 Column :SunFire C18, 4.6*50mm,3.5um A-RP-314
 Oven Temperature : 45C

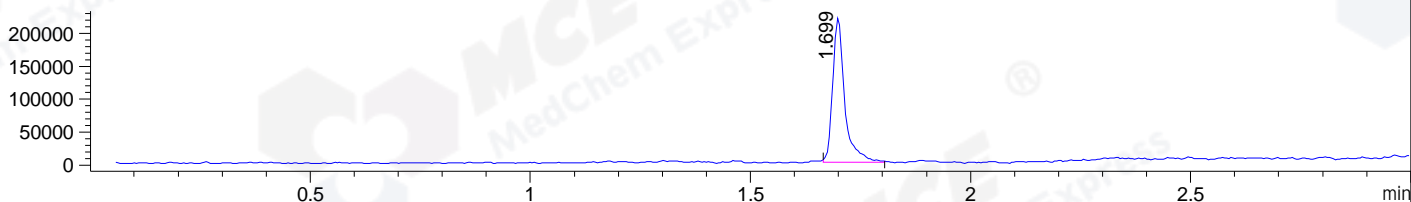
DAD1 B, Sig=214,4 Ref=off



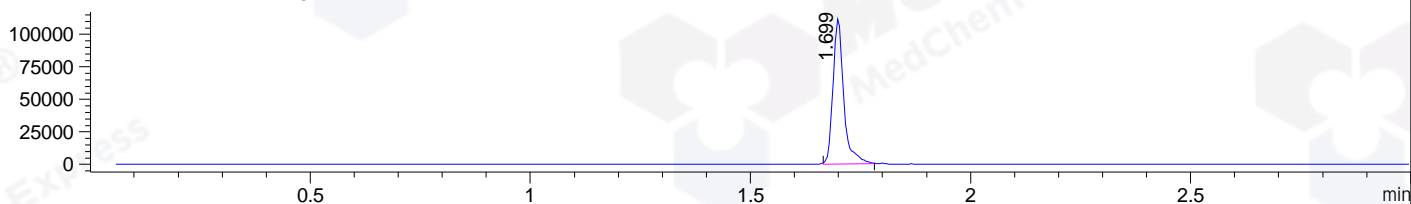
DAD1 C, Sig=254,4 Ref=off



MSD1 TIC, MS File ES-API, Pos, Scan, Frag: 70



Ion 463, MSD1 463, Target Mass 462 +H Positive, EIC=462.7:463.7



Integration Results for DAD1 B, Sig=214,4 Ref=off

RetTim	Width	Area	Height	Area%	MS (+)
1.63	0.01	0.95	1.35	0.10	ND
1.68	0.02	936.12	921.25	99.68	463
1.87	0.02	2.03	2.08	0.22	ND

Integration Results for DAD1 C, Sig=254,4 Ref=off

RetTim	Width	Area	Height	Area%	MS (+)
1.63	0.01	1.28	1.70	0.22	ND
1.68	0.02	575.85	633.21	99.73	463
1.87	0.01	0.28	0.58	0.05	ND

Integration Results for MSD1 TIC, MS File

RetTim	Width	Area	Height	Area%	MS (+)
1.70	0.03	417587.06	219707.89	100.00	463

Ret. Time: 1.70

<<<< POSITIVE SPECTRA >>>>

ES-API Positive

