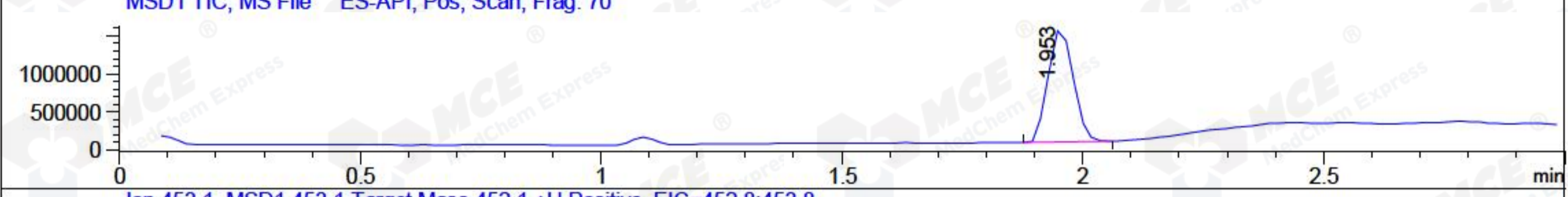
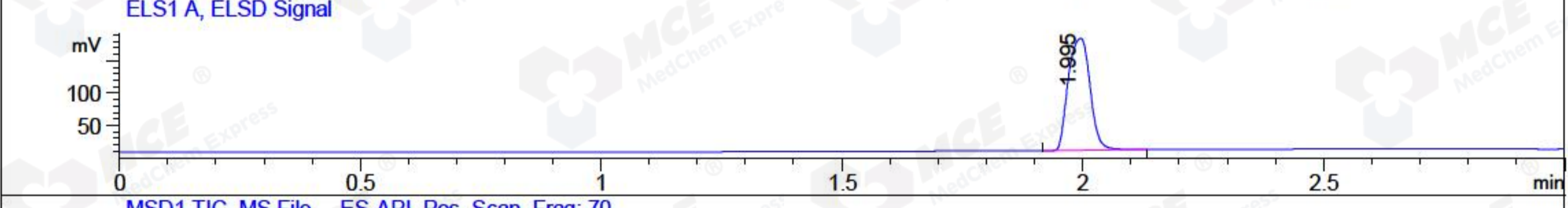
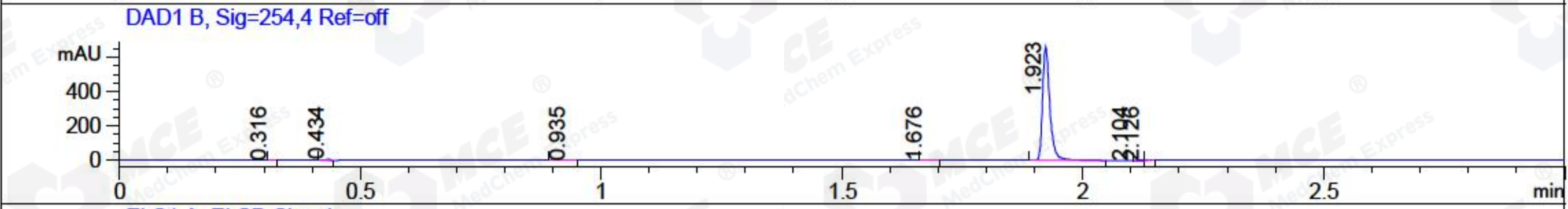
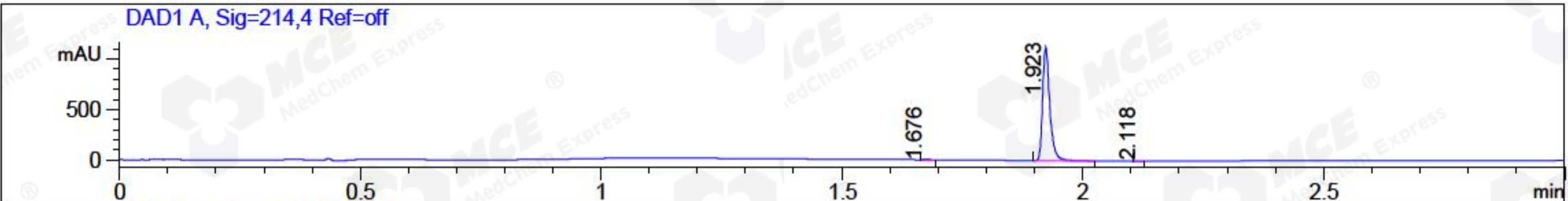


File ..a\2018\20180420\20180420\BIZ2018-420-CXL1.D Tgt Mass (CHM):
 Injection Date : 20 Apr 18 6:19 pm +0800 Seq. Line : 112
 Sample Name : BIZ2018-420-CXL1 Location : P2-A-07
 Acq. Operator : SYSTEM Inj : 1
 Spec. Reported : MS Integration Inj Volume : 1 ul
 Acq. Method : D:\LCMS03\Data\2018\20180420\20180420\1-POS-3MIN.M
 Analysis Method : D:\LCMS03\Data\2018\20180420\20180420\1-POS-3MIN.M
 Catalog No : HY-109073 Batch#29612
 Method Info : Mobile Phase: A: water(0.01%TFA) B:ACN(0.01%TFA)
 Gradient: 5% to 95%B within 1.3 min
 Flow Rate :1.8ml/min
 Column :SunFire C18, 4.6*50mm,3.5um A-RP-186
 Oven Temperature : 45C



Integration Results for DAD1 A, Sig=214,4 Ref=off

RetTim	Width	Area	Height	Area%	MS (+)
1.68	0.02	1.83	2.01	0.16	233
1.92	0.02	1156.90	1117.90	99.82	453
2.12	0.01	0.25	0.37	0.02	233

Integration Results for DAD1 B, Sig=254,4 Ref=off

RetTim	Width	Area	Height	Area%	MS (+)
0.32	0.01	0.04	0.07	0.01	279
0.43	0.01	3.84	5.91	0.56	547
0.93	0.02	0.35	0.21	0.05	279
1.68	0.01	0.83	0.84	0.12	233
1.92	0.02	685.06	658.60	99.19	453
2.10	0.01	0.29	0.00	0.04	233
2.13	0.01	0.24	0.23	0.03	233

Integration Results for ELS1 A, ELSD Signal

RetTim	Width	Area	Height	Area%	MS (+)
--------	-------	------	--------	-------	--------

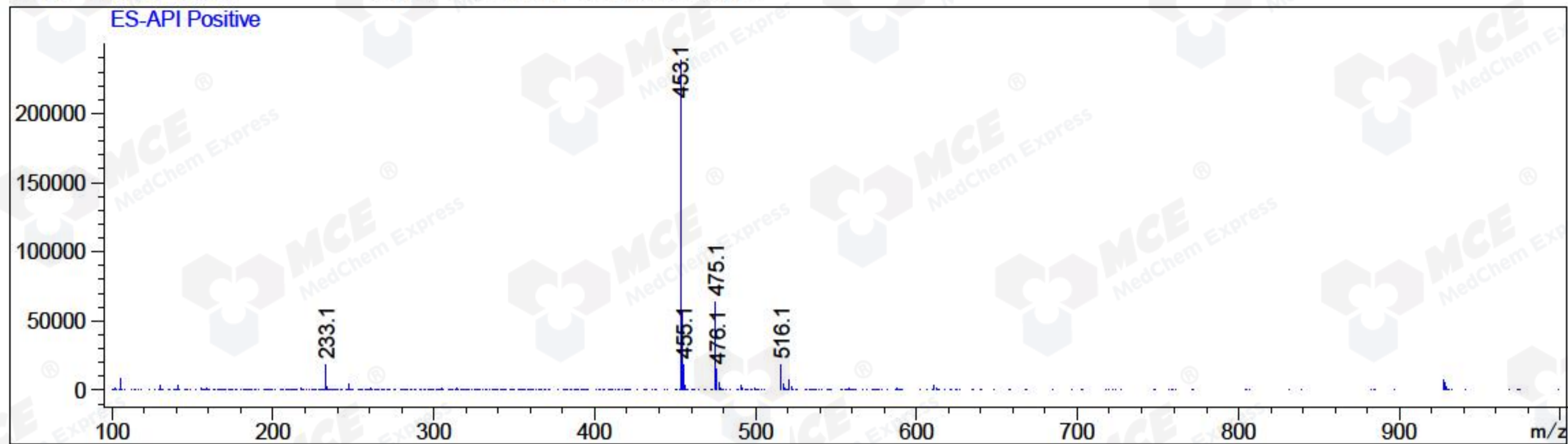
-----|-----|-----|-----|-----|-----|
2.00 0.05 542.59 172.43 100.00 453

Integration Results for MSD1 TIC, MS File

RetTim	Width	Area	Height	Area%	MS (+)
1.95	0.06	5307012.50	1476319.38	100.00	453

Ret. Time: 1.95

<<<< POSITIVE SPECTRA >>>>



*** End of Report ***