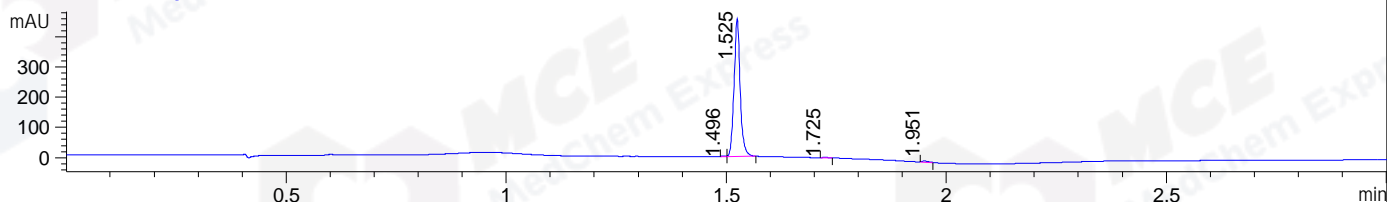
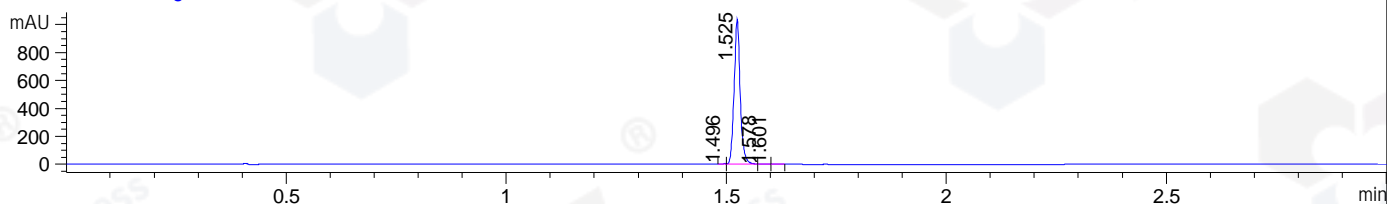


File ..DATA\2020\20200909\1102\CPK2020-907-28290.D Tgt Mass (CHM):
 Injection Date : 9 Sep 20 12:15 pm +0800 Seq. Line : 36
 Sample Name : CPK2020-907-28290 Location : P1-A-09
 Acq. Operator : zyj_1547 Inj : 1
 Spec. Reported : MS Integration Inj Volume : 1 ul
 Acq. Method : D:\Chem32\1\data\2020\20200909\1102\1-POS-3MIN.M
 Analysis Method : D:\CHEM32\1\DATA\2020\20200909\1102\1-POS-3MIN.M
 Catalog No : HY-109619
 Method Info : Mobile Phase: A: water(0.01%TFA) B:ACN(0.01%TFA)
 Gradient: 5% to 95%B within 1.3 min
 Flow Rate :1.8ml/min
 Column :SunFire C18, 4.6*50mm,3.5um A-RP-624

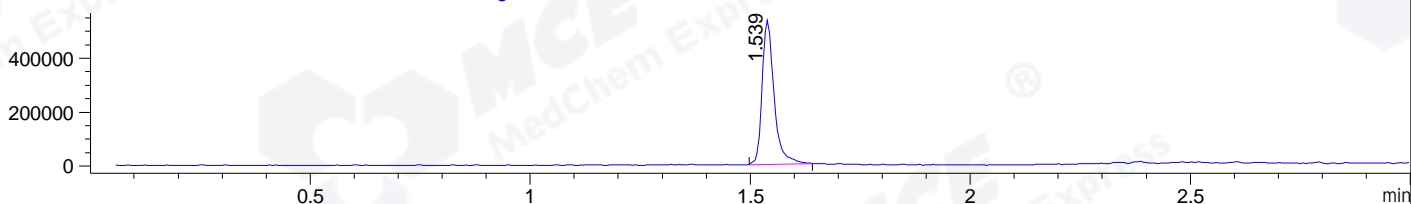
DAD1 B, Sig=214,4 Ref=off



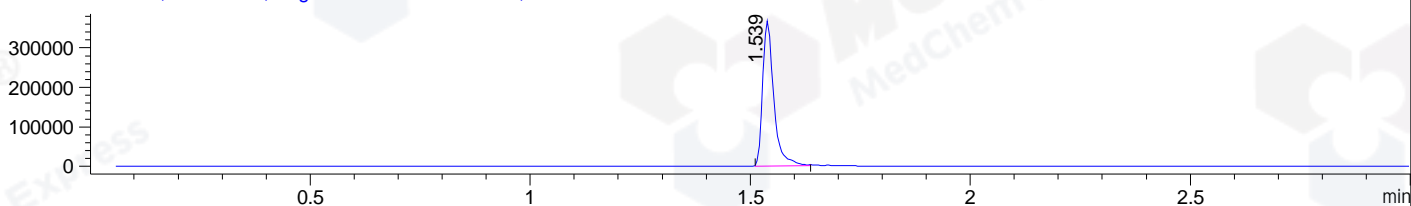
DAD1 C, Sig=254,4 Ref=off



MSD1 TIC, MS File ES-API, Pos, Scan, Frag: 70



Ion 348, MSD1 348, Target Mass 347 +H Positive, EIC=347.7:348.7



Integration Results for DAD1 B, Sig=214,4 Ref=off

RetTim	Width	Area	Height	Area%	MS (+)
1.50	0.01	1.13	1.89	0.25	346
1.52	0.02	441.46	457.59	98.80	348
1.73	0.01	1.09	1.40	0.24	348
1.95	0.01	3.13	3.57	0.70	ND

Integration Results for DAD1 C, Sig=254,4 Ref=off

RetTim	Width	Area	Height	Area%	MS (+)
1.50	0.01	2.79	4.62	0.28	346
1.52	0.02	1003.00	1040.25	99.27	348
1.58	0.02	3.59	2.75	0.36	348
1.60	0.02	1.02	1.08	0.10	348

Integration Results for MSD1 TIC, MS File

RetTim	Width	Area	Height	Area%	MS (+)
1.54	0.03	1013100.06	535967.31	100.00	348

Ret. Time: 1.54

<<<< POSITIVE SPECTRA >>>>

ES-API Positive

