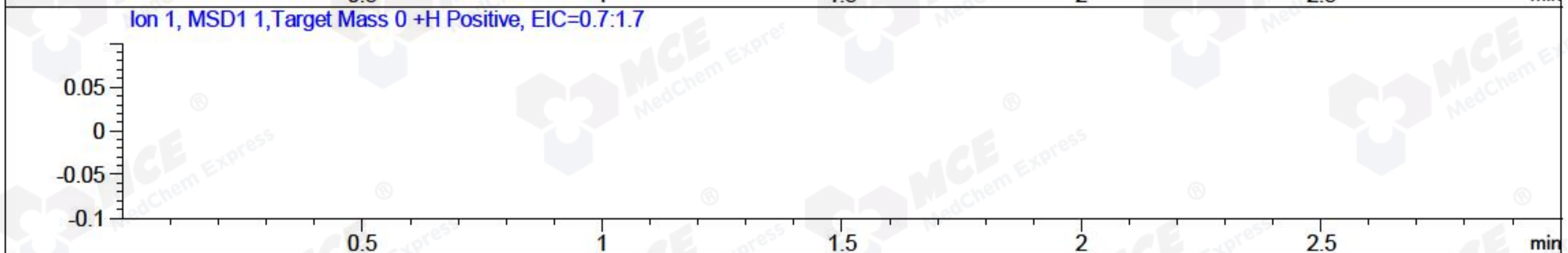
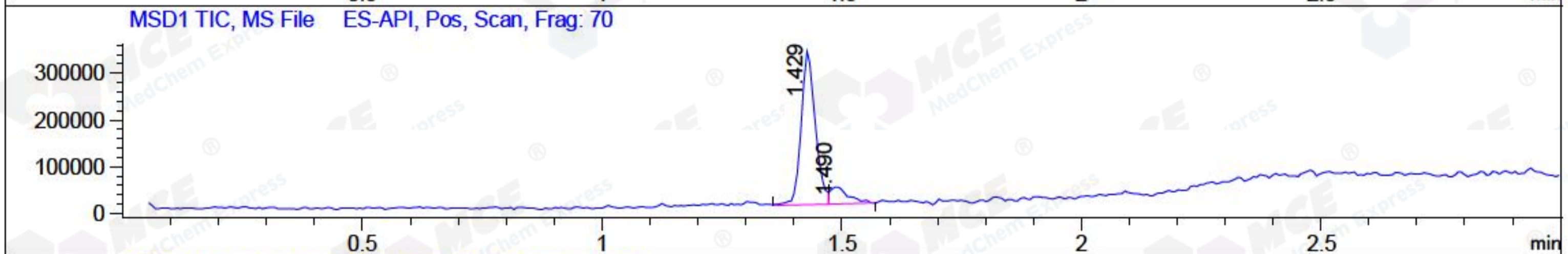
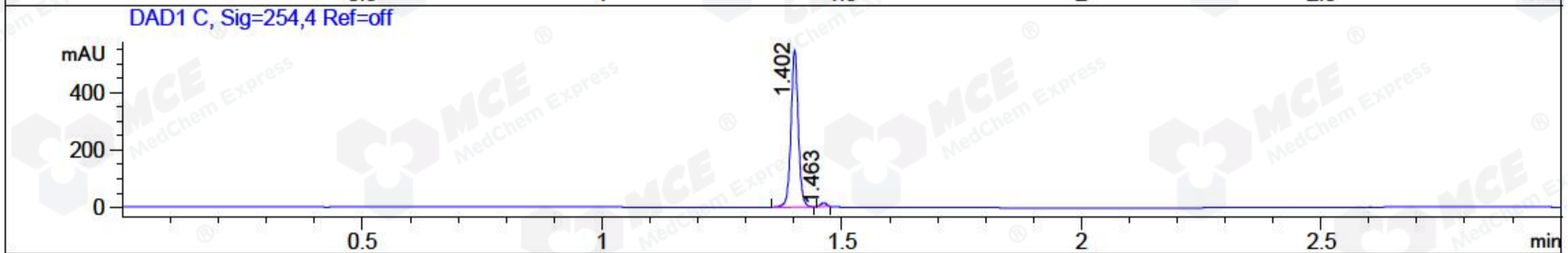
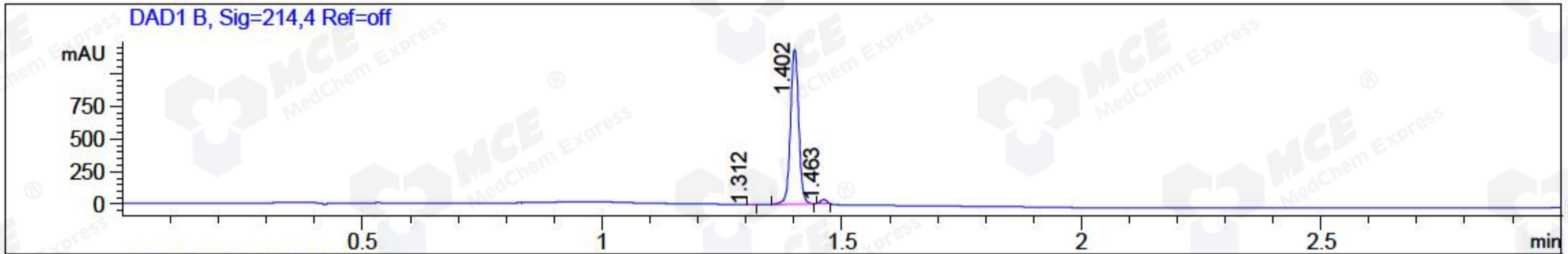


File ..1\DATA\2018\20181126\509\BIZ2018-N26-WYQ5.D Tgt Mass (CHM):
 Injection Date : 26 Nov 18 7:15 pm +0800 Seq. Line : 17
 Sample Name : BIZ2018-N26-WYQ5 Location : P2-B-02
 Acq. Operator : LQ_1052 Inj : 1
 Spec. Reported : MS Integration Inj Volume : 1 ul
 Acq. Method : D:\Chem32\1\data\2018\20181126\509\1-POS-3MIN-1.M
 Analysis Method : D:\CHEM32\1\DATA\2018\20181126\509\1-POS-3MIN-1.M
 Catalog No : HY-110096 Batch#34632 A-RP-314
 Method Info : Mobile Phase: A: water(0.01%TFA) B:ACN(0.01%TFA)
 Gradient: 5% to 95%B within 1.3 min
 Flow Rate :1.8ml/min
 Column :SunFire C18, 4.6*50mm,3.5um A-RP-314
 Oven Temperature : 45□



Integration Results for DAD1 B, Sig=214,4 Ref=off

RetTim	Width	Area	Height	Area%	MS (+)
1.31	0.01	0.77	0.93	0.05	163
1.40	0.02	1420.62	1185.71	98.01	290
1.46	0.01	28.02	31.94	1.93	290

Integration Results for DAD1 C, Sig=254,4 Ref=off

RetTim	Width	Area	Height	Area%	MS (+)
1.40	0.02	580.53	547.59	98.00	290
1.46	0.01	11.83	13.16	2.00	290

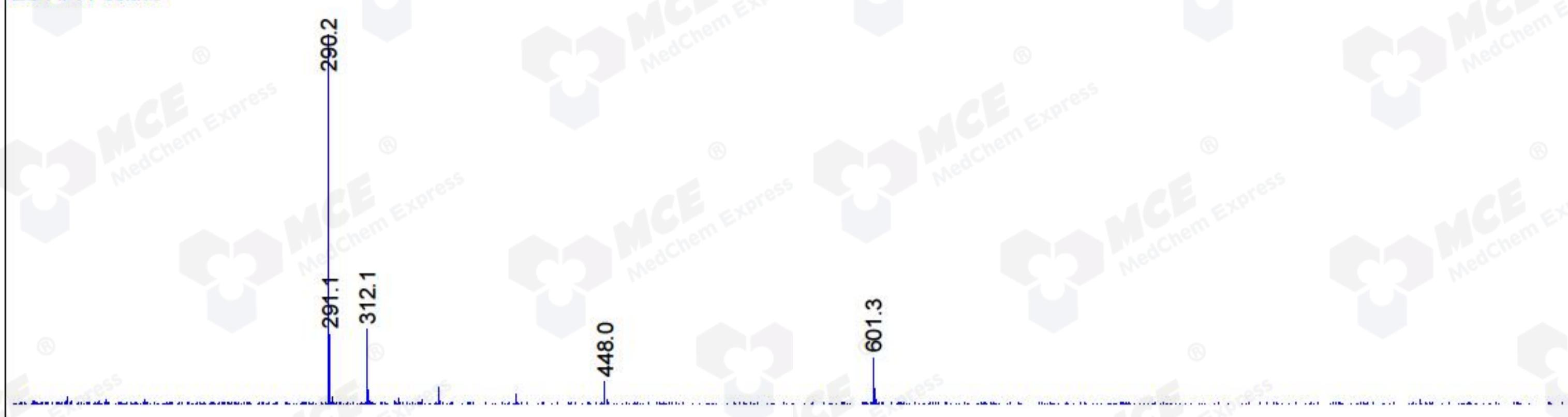
Integration Results for MSD1 TIC, MS File

RetTim	Width	Area	Height	Area%	MS (+)
1.43	0.03	675364.75	331550.13	87.56	290
1.49	0.04	95943.31	36876.39	12.44	322

Ret. Time: 1.43

<<<< POSITIVE SPECTRA >>>>

ES-API Positive



Ret. Time: 1.49

ES-API Positive

