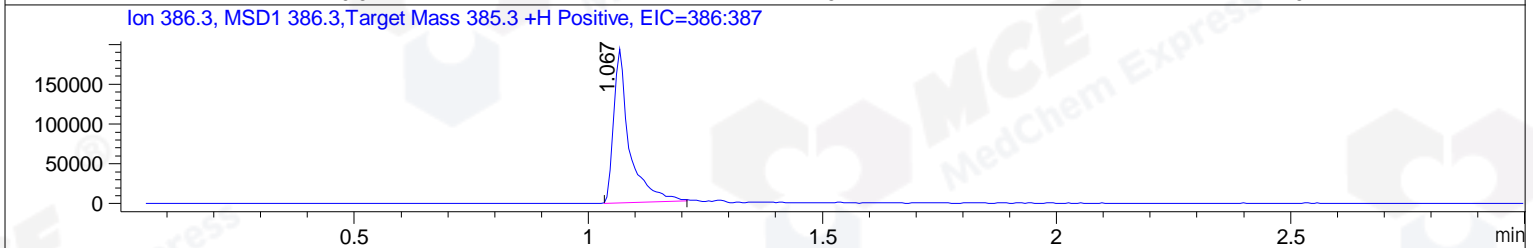
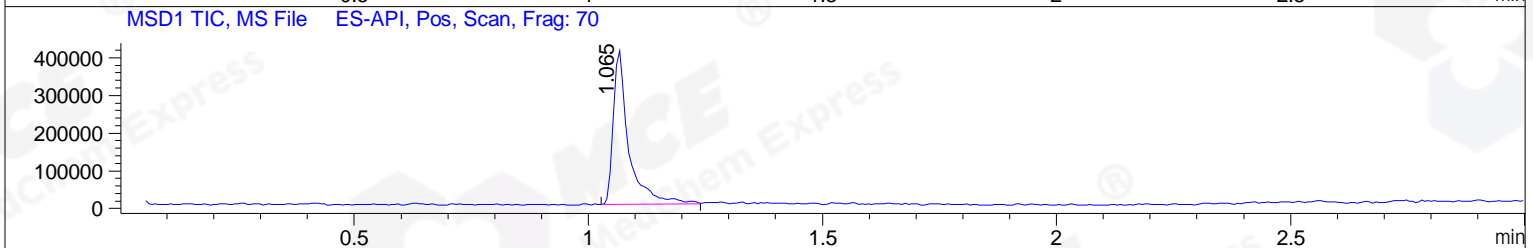
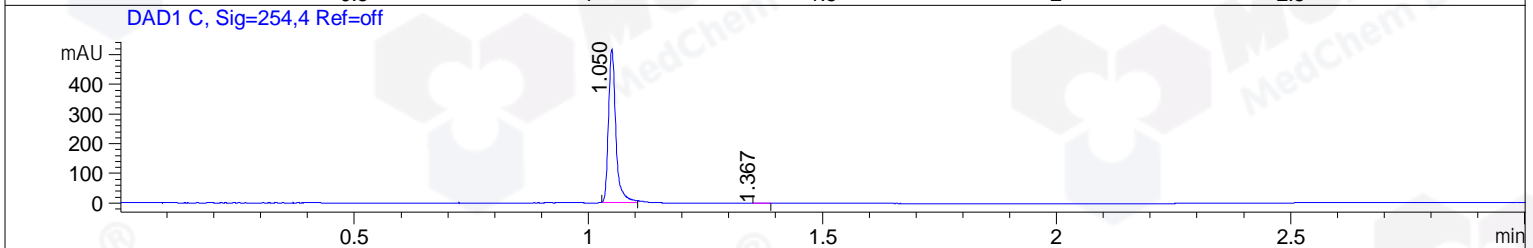
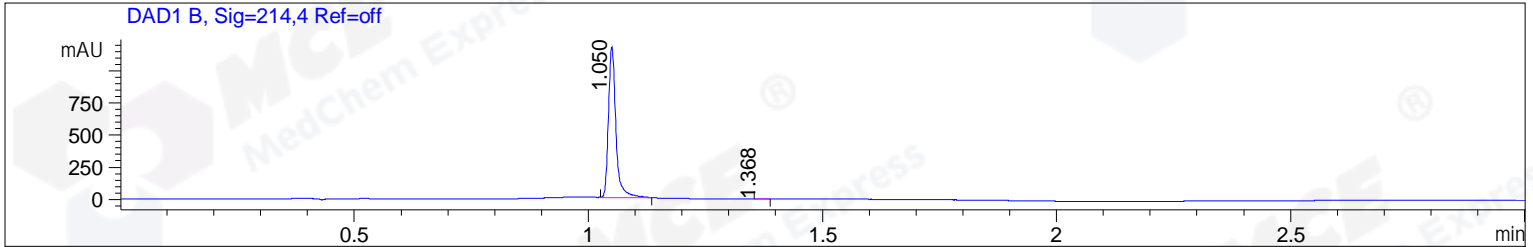


File ..1\DATA\2019\20190308\548\BIZ2019-307-CXL2.D Tgt Mass (CHM):
 Injection Date : 8 Mar 19 1:28 pm +0800 Seq. Line : 24
 Sample Name : BIZ2019-307-CXL2 Location : P1-E-03
 Acq. Operator : LQ_1052 Inj : 1
 Spec. Reported : MS Integration Inj Volume : 1 ul
 Acq. Method : D:\Chem32\1\data\2019\20190308\548\1-POS-3MIN-1.M
 Analysis Method : D:\CHEM32\1\DATA\2019\20190308\548\1-POS-3MIN-1.M
 Catalog No : HY-111101 Batch#38878
 Method Info : Mobile Phase: A: water(0.01%TFA) B:ACN(0.01%TFA)
 Gradient: 5% to 95%B within 1.3 min
 Flow Rate :1.8ml/min
 Column :SunFire C18, 4.6*50mm,3.5um A-RP-314
 Oven Temperature : 45



Integration Results for DAD1 B, Sig=214,4 Ref=off

RetTim	Width	Area	Height	Area%	MS (+)
1.05	0.02	1305.26	1171.70	99.83	386
1.37	0.02	2.24	1.81	0.17	386

Integration Results for DAD1 C, Sig=254,4 Ref=off

RetTim	Width	Area	Height	Area%	MS (+)
1.05	0.02	566.23	516.41	99.81	386
1.37	0.02	1.06	0.88	0.19	386

Integration Results for MSD1 TIC, MS File

RetTim	Width	Area	Height	Area%	MS (+)
1.07	0.03	951630.06	410274.34	100.00	386

Ret. Time: 1.07

<<<< POSITIVE SPECTRA >>>>

ES-API Positive

