

File ..ta\2018\20180507\20180507\BIZ2018-503-WYQ2.D Tgt Mass (CHM):

Injection Date : 7 May 18 11:44 pm +0800 Seq. Line : 91

Sample Name : BIZ2018-503-WYQ2 Location : P2-A-03

Acq. Operator : SYSTEM Inj : 1

Spec. Reported : MS Integration Inj Volume : 1 ul

Acq. Method : D:\LCMS03\Data\2018\20180507\20180507\1-POS-3MIN.M

Analysis Method : D:\LCMS03\Data\2018\20180507\20180507\1-POS-3MIN.M

Catalog No : HY-111267 Batch#29932

Method Info : Mobile Phase: A: water(0.01%TFA) B:ACN(0.01%TFA)

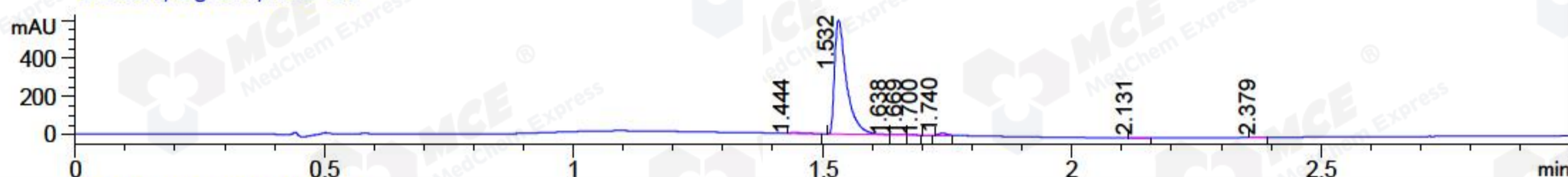
Gradient: 5% to 95%B within 1.3 min

Flow Rate :1.8ml/min

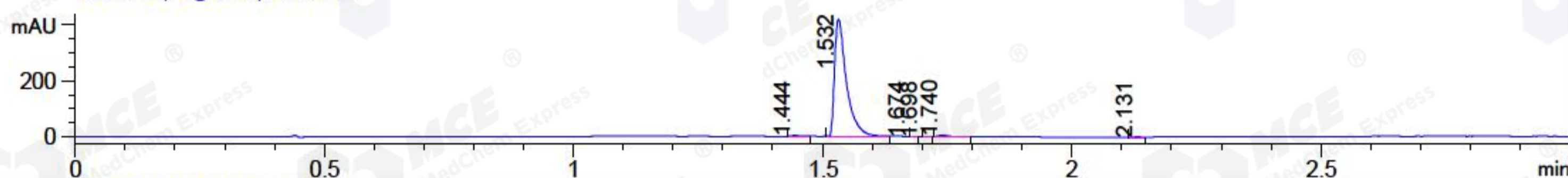
Column :SunFire C18, 4.6*50mm,3.5um A-RP-186

Oven Temperature : 45C

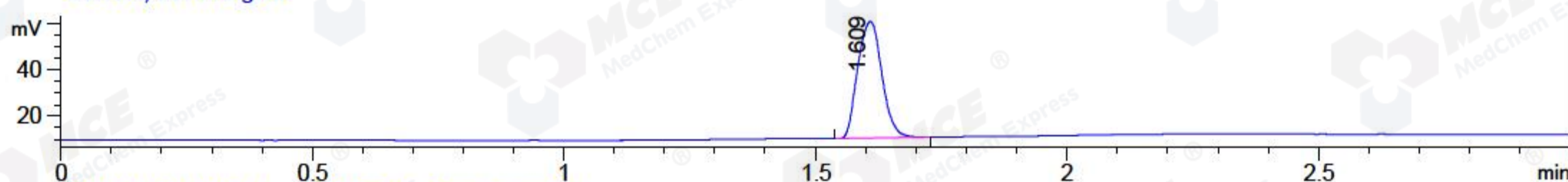
DAD1 A, Sig=214,4 Ref=off



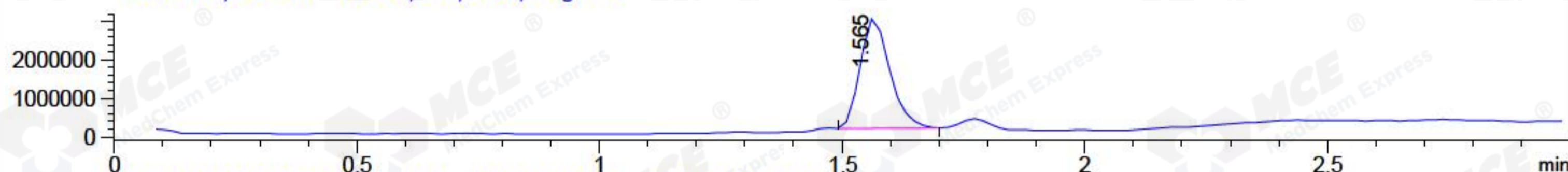
DAD1 B, Sig=254,4 Ref=off



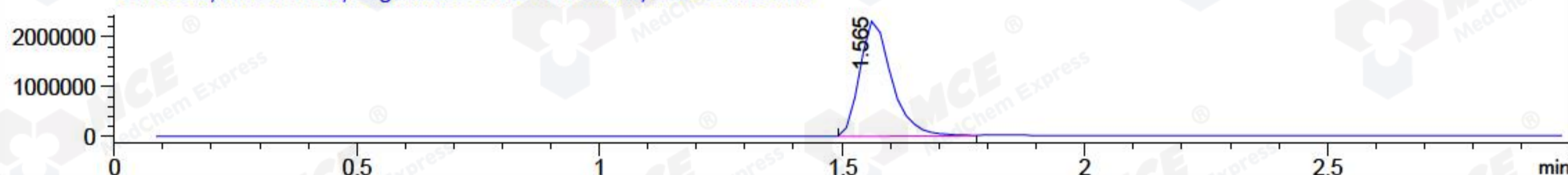
ELS1 A, ELSD Signal



MSD1 TIC, MS File ES-API, Pos, Scan, Frag: 70



Ion 369.2, MSD1 369.2, Target Mass 368.2 +H Positive, EIC=368.9:369.9



Integration Results for DAD1 A, Sig=214,4 Ref=off

RetTim	Width	Area	Height	Area%	MS (+)
1.44	0.02	6.05	5.57	0.60	297
1.53	0.03	988.51	595.84	98.13	369
1.64	0.02	1.03	0.81	0.10	369
1.67	0.01	0.36	0.16	0.04	369
1.70	0.01	0.18	0.00	0.02	369
1.74	0.02	9.10	9.57	0.90	591
2.13	0.02	1.13	0.96	0.11	233
2.38	0.02	0.99	0.86	0.10	105

Integration Results for DAD1 B, Sig=254,4 Ref=off

RetTim	Width	Area	Height	Area%	MS (+)
1.44	0.02	3.32	3.31	0.47	297
1.53	0.03	694.35	419.65	98.62	369
1.67	0.01	0.12	0.05	0.02	369
1.70	0.01	0.16	-0.02	0.02	369
1.74	0.02	5.48	4.82	0.78	591
2.13	0.02	0.63	0.60	0.09	233

Integration Results for ELS1 A, ELSD Signal

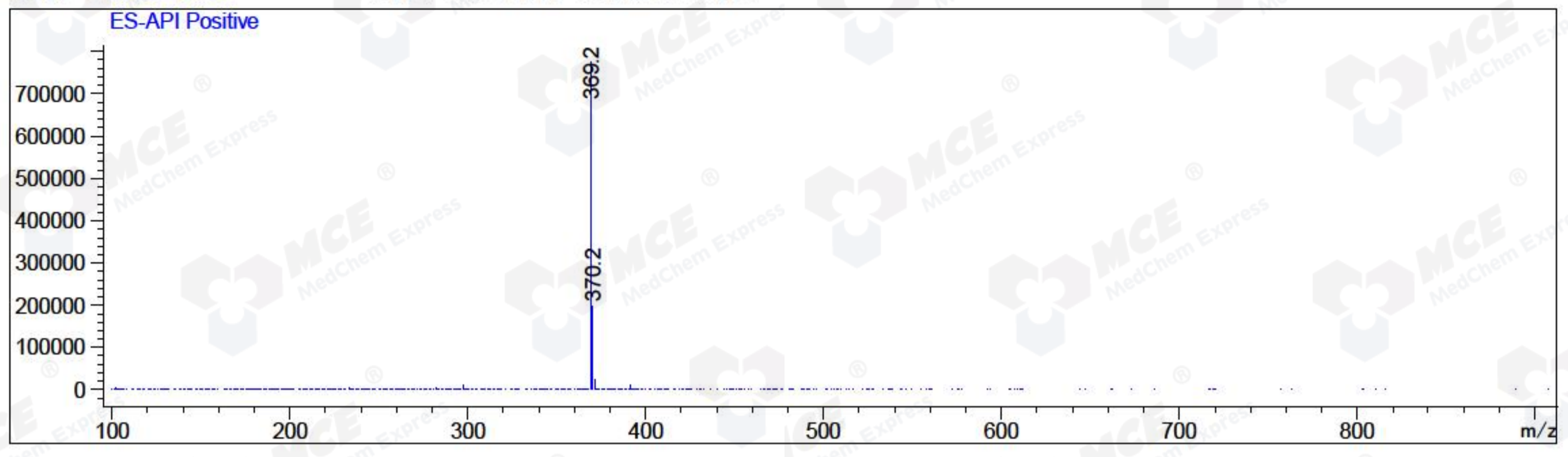
RetTim	Width	Area	Height	Area%	MS (+)
1.61	0.05	169.39	50.66	100.00	369

Integration Results for MSD1 TIC, MS File

RetTim	Width	Area	Height	Area%	MS (+)
1.57	0.07	12187995.00	2856491.50	100.00	369

Ret. Time: 1.57

<<<< POSITIVE SPECTRA >>>>



*** End of Report ***