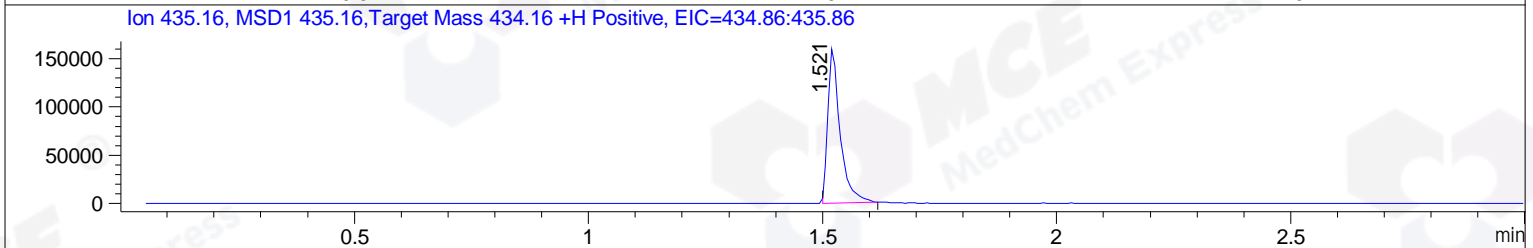
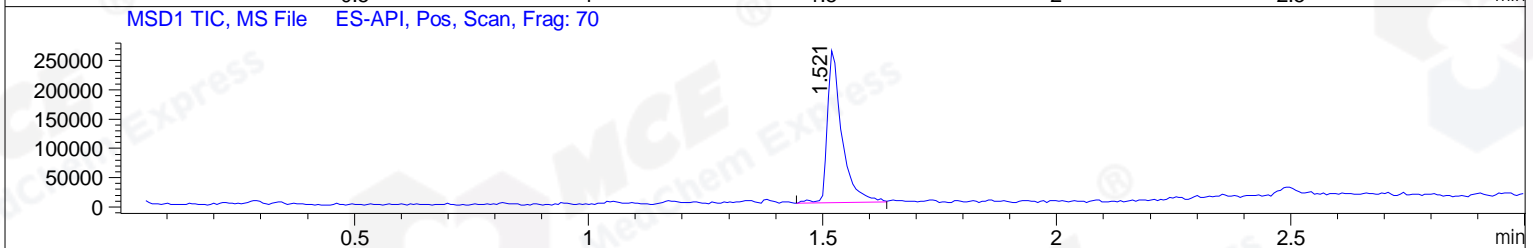
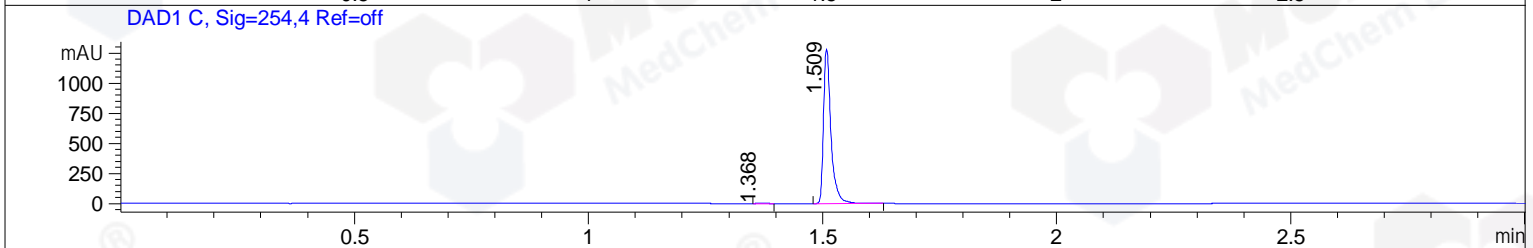
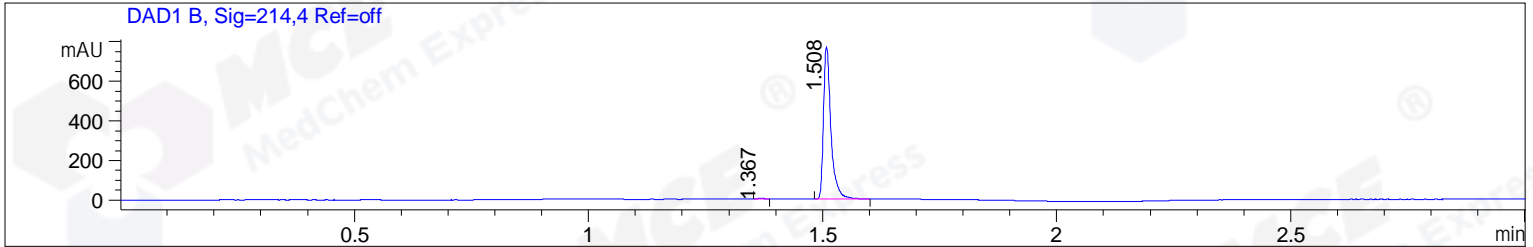


File ..1\DATA\2019\20190724\655\BIZ2019-723\_CXL2.D Tgt Mass (CHM):  
 Injection Date : 24 Jul 19 9:40 am +0800 Seq. Line : 14  
 Sample Name : BIZ2019-723\_CXL2 Location : P1-B-01  
 Acq. Operator : ZJ\_1432 Inj : 1  
 Spec. Reported : MS Integration Inj Volume : 1 ul  
 Acq. Method : D:\Chem32\1\data\2019\20190724\655\1-POS-3MIN.M  
 Analysis Method : D:\CHEM32\1\DATA\2019\20190724\655\1-POS-3MIN.M  
 Catalog No : HY-111745 Batch#43833  
 Method Info : Mobile Phase: A: water(0.01%TFA) B:ACN(0.01%TFA)  
 Gradient: 5% to 95%B within 1.3 min  
 Flow Rate :1.8ml/min  
 Column :SunFire C18, 4.6\*50mm,3.5um A-RP-433  
 Oven Temperature : 45



Integration Results for DAD1 B, Sig=214,4 Ref=off

RetTim	Width	Area	Height	Area%	MS (+)
1.37	0.02	1.87	2.01	0.22	ND
1.51	0.02	847.15	769.06	99.78	435

Integration Results for DAD1 C, Sig=254,4 Ref=off

RetTim	Width	Area	Height	Area%	MS (+)
1.37	0.02	3.48	3.52	0.24	ND
1.51	0.02	1417.79	1285.29	99.76	435

Integration Results for MSD1 TIC, MS File

RetTim	Width	Area	Height	Area%	MS (+)
1.52	0.03	558026.88	263789.22	100.00	435

Ret. Time: 1.52

<<<< POSITIVE SPECTRA >>>>

ES-API Positive

