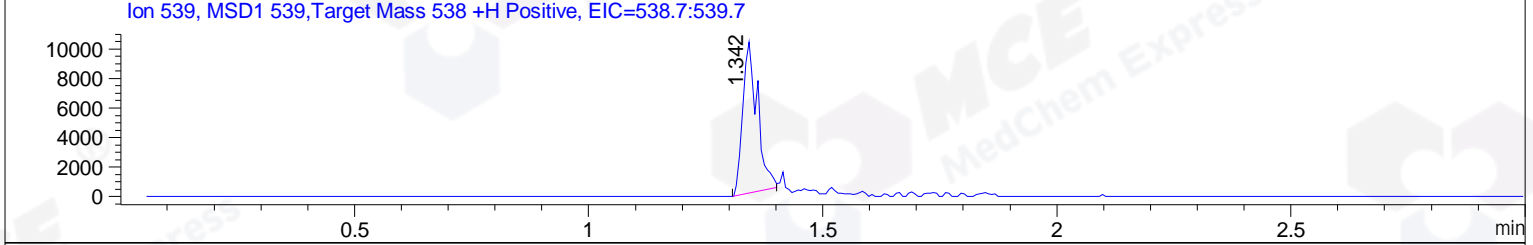
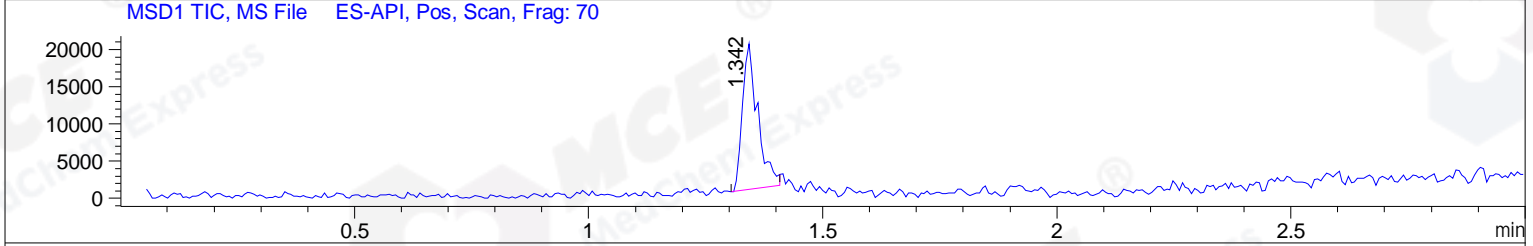
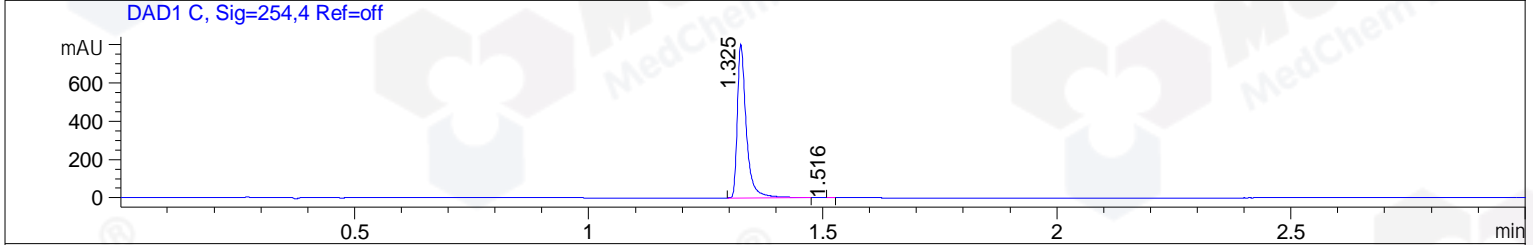
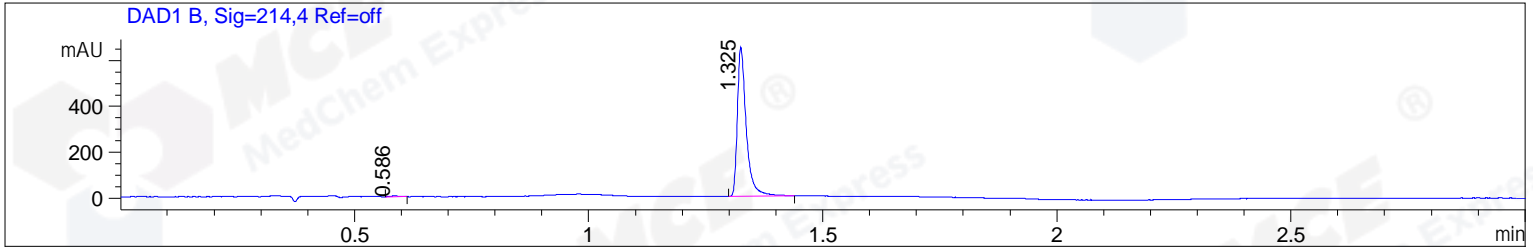


File ..\DATA\2019\20191126\777\BIZ2019-N25-CXL13.D Tgt Mass (CHM):
 Injection Date : 26 Nov 19 6:14 pm +0800 Seq. Line : 119
 Sample Name : BIZ2019-N25-CXL13 Location : PL-C-08
 Acq. Operator : ZJ_1432 Inj : 1
 Spec. Reported : MS Integration Inj Volume : 1 ul
 Acq. Method : D:\Chem32\1\data\2019\20191126\777\1-POS-3MIN.M
 Analysis Method : D:\CHEM32\1\DATA\2019\20191126\777\1-POS-3MIN.M
 Catalog No : HY-112038 Batch#56922
 Method Info : Mobile Phase: A: water(0.01%TFA) B:ACN(0.01%TFA)
 Gradient: 5% to 95%B within 1.3 min
 Flow Rate :1.8ml/min
 Column :SunFire C18, 4.6*50mm,3.5um A-RP-433
 Oven Temperature : 45



Integration Results for DAD1 B, Sig=214,4 Ref=off

RetTim	Width	Area	Height	Area%	MS (+)
0.59	0.02	4.25	3.61	0.49	ND
1.33	0.02	859.32	651.48	99.51	539

Integration Results for DAD1 C, Sig=254,4 Ref=off

RetTim	Width	Area	Height	Area%	MS (+)
1.33	0.02	1063.55	803.11	99.98	539
1.52	0.01	0.22	0.30	0.02	ND

Integration Results for MSD1 TIC, MS File

RetTim	Width	Area	Height	Area%	MS (+)
1.34	0.04	44669.39	19635.05	100.00	539

Ret. Time: 1.34

<<<< POSITIVE SPECTRA >>>>

ES-API Positive

