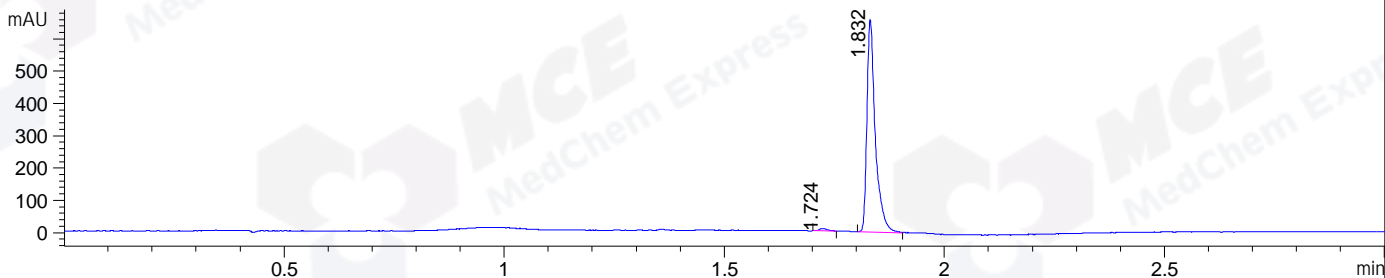
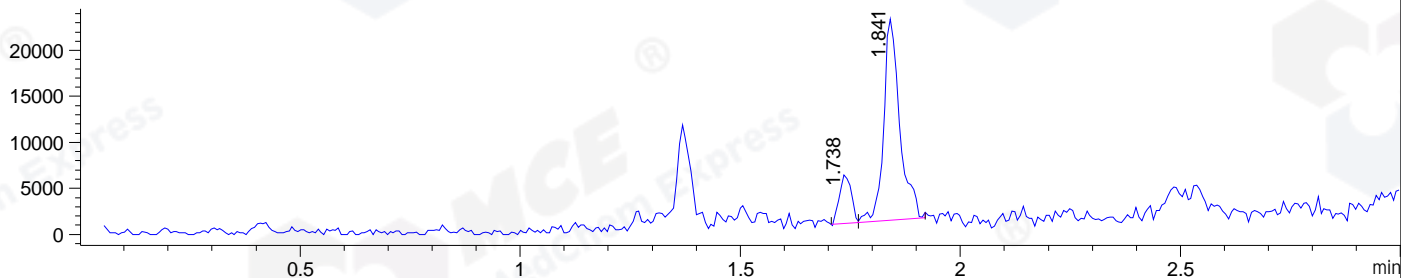


File ..\DATA\2019\20191221\794\BIZ2019-D19-CXL1.D Tgt Mass (CHM):  
 Injection Date : 21 Dec 19 10:31 am +0800 Seq. Line : 9  
 Sample Name : BIZ2019-D19-CXL1 Location : P1-B-03  
 Acq. Operator : ZJ\_1432 Inj : 1  
 Spec. Reported : MS Integration Inj Volume : 0.3 ul  
 Acq. Method : D:\Chem32\1\data\2019\20191221\794\1-POS-3MIN.M  
 Analysis Method : D:\CHEM32\1\DATA\2019\20191221\794\1-POS-3MIN.M  
 Catalog No : HY-112055 Batch# 58134  
 Method Info : Mobile Phase: A: water(0.01%TFA) B:ACN(0.01%TFA)  
 Gradient: 5% to 95%B within 1.3 min  
 Flow Rate :1.8ml/min  
 Column :SunFire C18, 4.6\*50mm,3.5um A-RP-433  
 Oven Temperature : 45□

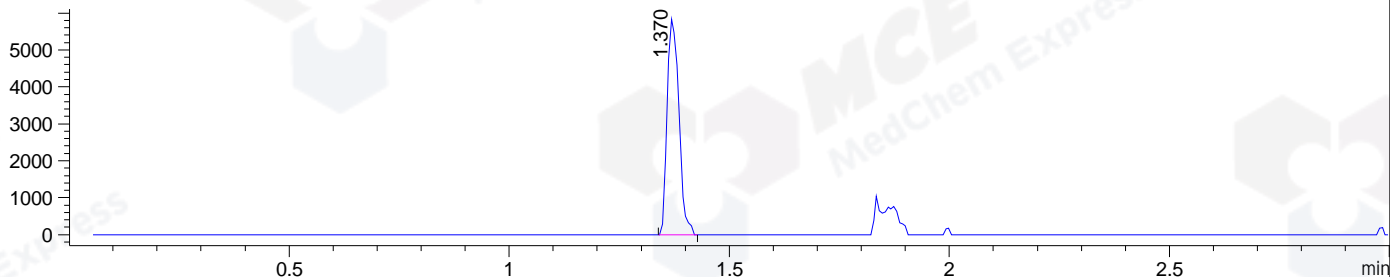
DAD1 B, Sig=214,4 Ref=off



MSD1 TIC, MS File ES-API, Pos, Scan, Frag: 70



Ion 339, MSD1 339, Target Mass 338 +H Positive, EIC=338.7:339.7



Integration Results for DAD1 B, Sig=214,4 Ref=off

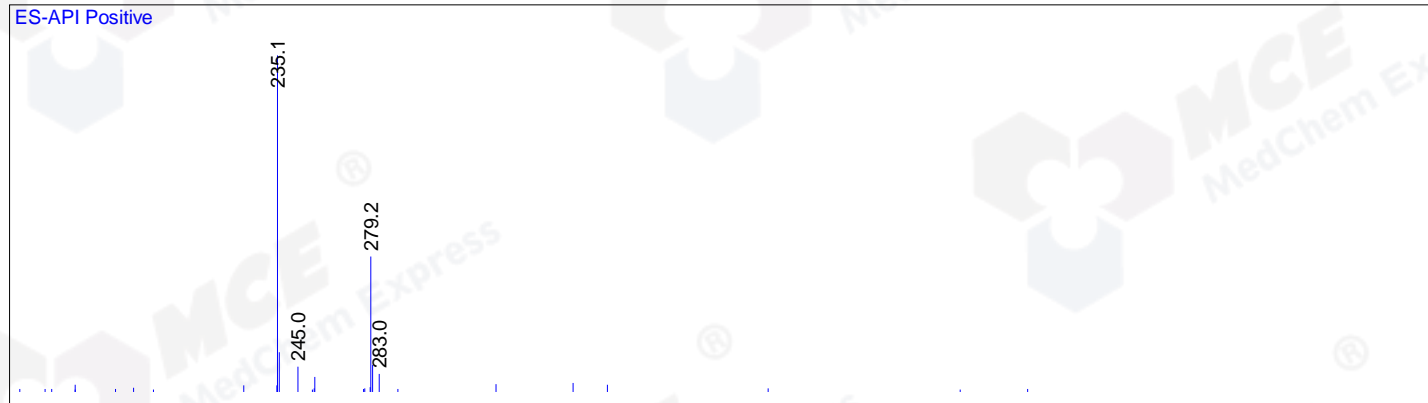
| RetTim | Width | Area   | Height | Area% | MS (+) |
|--------|-------|--------|--------|-------|--------|
| 1.72   | 0.02  | 9.13   | 7.05   | 1.04  | 235    |
| 1.83   | 0.02  | 870.56 | 656.87 | 98.96 | 222    |

Integration Results for MSD1 TIC, MS File

| RetTim | Width | Area     | Height   | Area% | MS (+) |
|--------|-------|----------|----------|-------|--------|
| 1.74   | 0.03  | 9767.00  | 5295.83  | 14.91 | 235    |
| 1.84   | 0.04  | 55749.64 | 21846.92 | 85.09 | 222    |

Ret. Time: 1.74

<<<< POSITIVE SPECTRA >>>>



Ret. Time: 1.84

