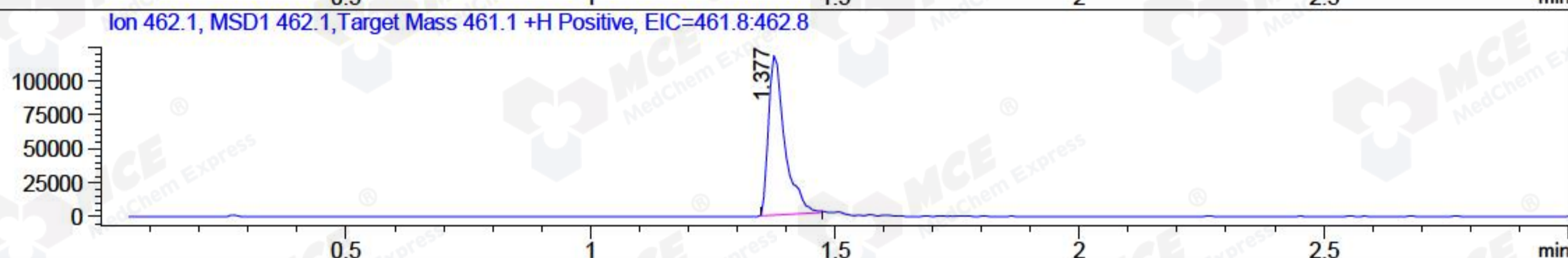
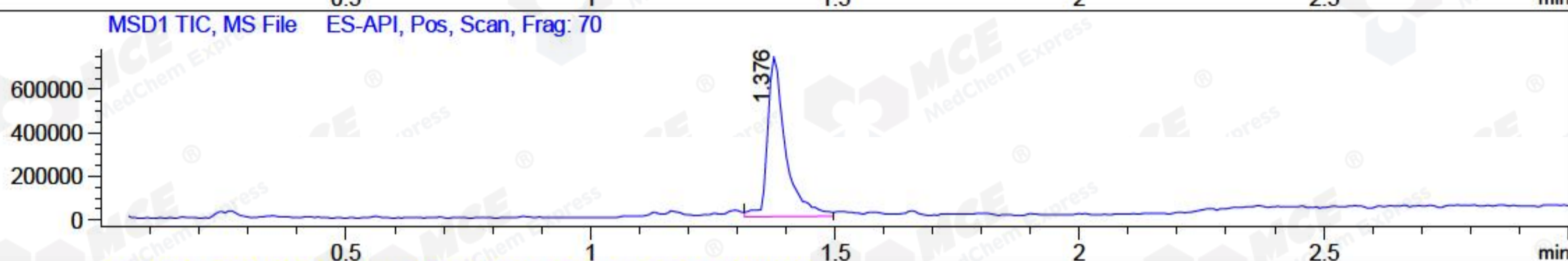
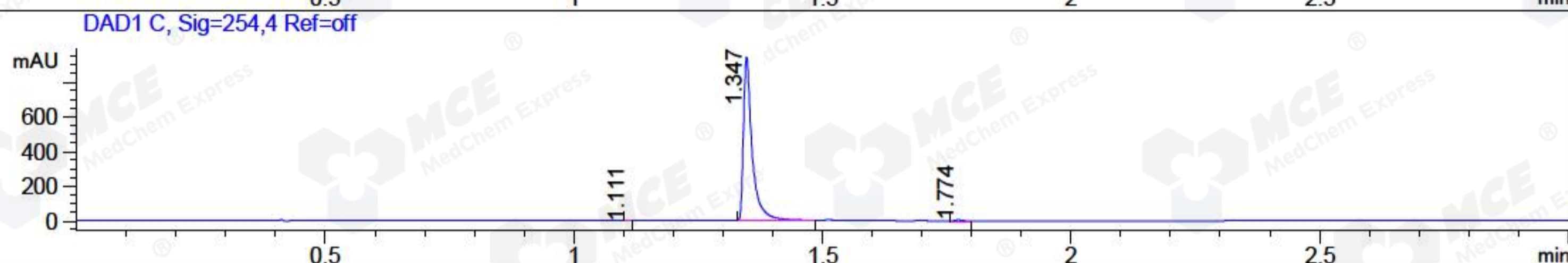
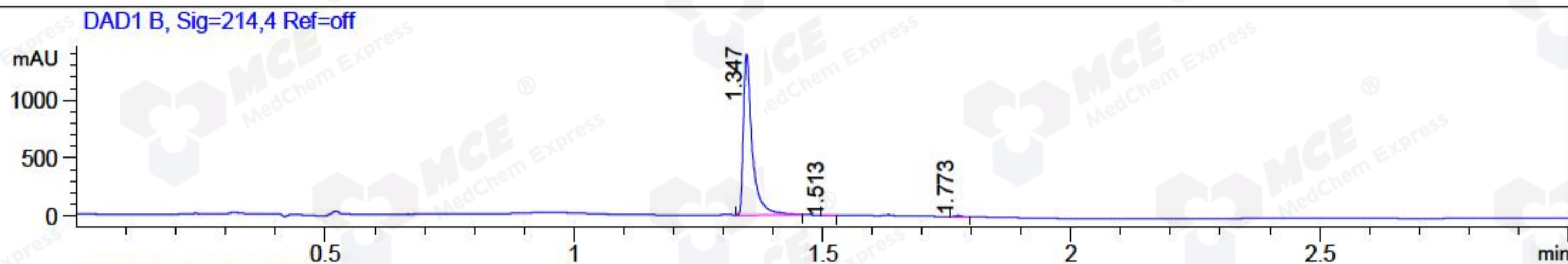


File ..DATA\2018\20181009\418 1\BIZ2018-009-CXL1.D Tgt Mass (CHM):
Injection Date : 9 Oct 18 2:14 pm +0800 Seq. Line : 15
Sample Name : BIZ2018-009-CXL1 Location : P1-A-07
Acq. Operator : LQ_1052 Inj : 1
Spec. Reported : MS Integration Inj Volume : 1 ul
Acq. Method : D:\Chem32\1\data\2018\20181009\418 1\1-POS-3MIN-1.M
Analysis Method : D:\CHEM32\1\DATA\2018\20181009\418 1\1-POS-3MIN-1.M
Catalog No : HY-112094 Batch#33280 A-RP-314
Method Info : Mobile Phase: A: water(0.01%TFA) B:ACN(0.01%TFA)
Gradient: 5% to 95%B within 1.3 min
Flow Rate :1.8ml/min
Column :SunFire C18, 4.6*50mm,3.5um A-RP-314
Oven Temperature : 45□



Integration Results for DAD1 B, Sig=214,4 Ref=off

RetTim	Width	Area	Height	Area%	MS (+)
1.35	0.02	1698.85	1385.77	99.42	462
1.51	0.02	1.47	1.53	0.09	462
1.77	0.01	8.45	9.54	0.49	141

Integration Results for DAD1 C, Sig=254,4 Ref=off

RetTim	Width	Area	Height	Area%	MS (+)
1.11	0.01	0.17	0.26	0.01	206
1.35	0.02	1151.45	945.43	99.52	462
1.77	0.01	5.44	6.08	0.47	141

Integration Results for MSD1 TIC, MS File

RetTim	Width	Area	Height	Area%	MS (+)
1.38	0.04	1895088.75	735541.13	100.00	462

Ret. Time: 1.38

<<<< POSITIVE SPECTRA >>>>

