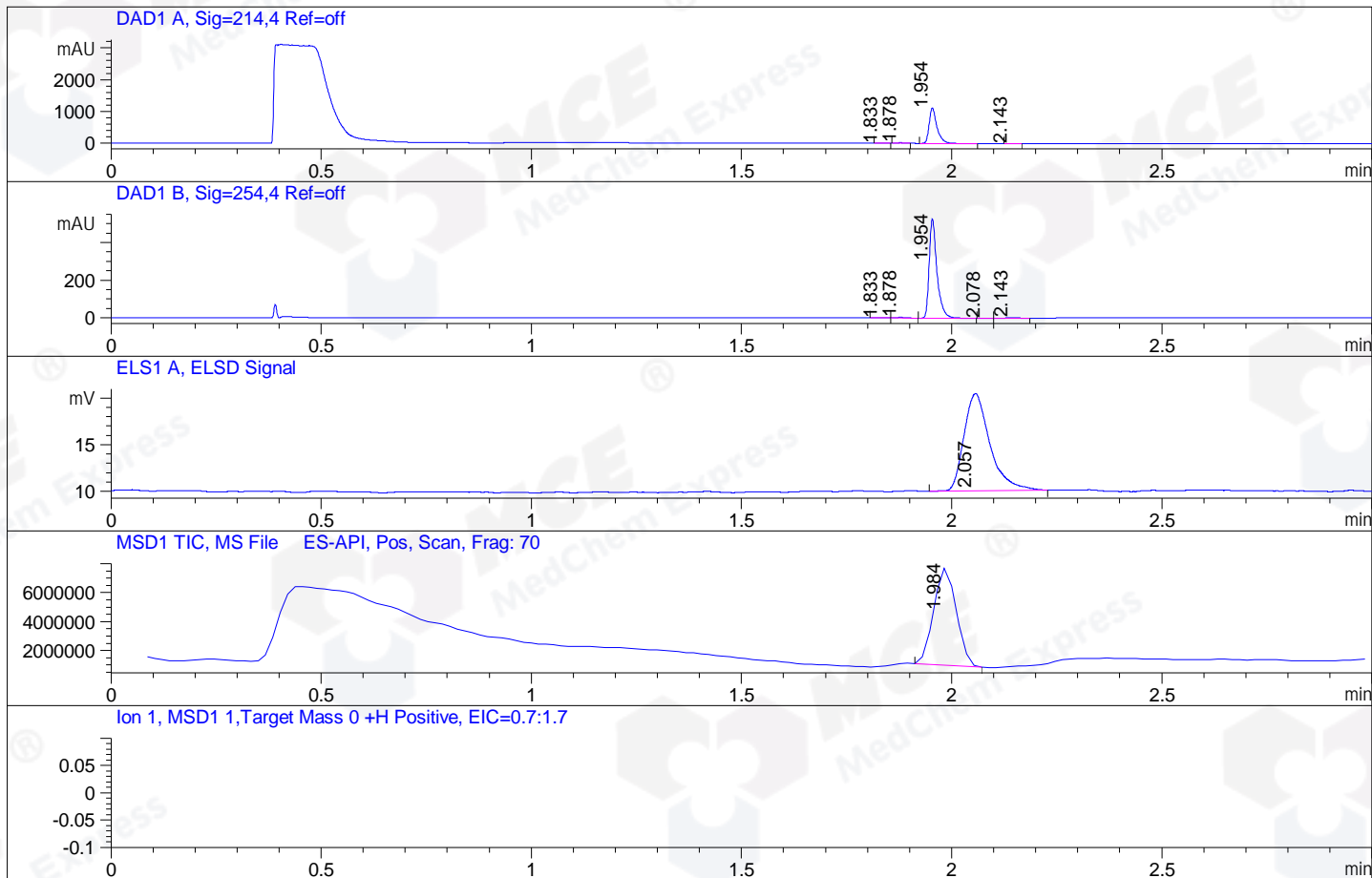


File ..3\Data\20190417\20190417 1\CZ6624-005-1_4.D Tgt Mass (CHM):
 Injection Date : 17 Apr 19 5:05 pm +0800 Seq. Line : 23
 Sample Name : CZ6624-005-1_4 Location : P2-C-02
 Acq. Operator : SYSTEM Inj : 1
 Spec. Reported : MS Integration Inj Volume : 1 ul
 Acq. Method : D:\LCMS03\Data\20190417\20190417 1\1-POS-3MIN.M
 Analysis Method : D:\LCMS03\Data\20190417\20190417 1\1-POS-3MIN.M
 Catalog No : HY-112427 Batch#40216
 Method Info : Mobile Phase: A: water(0.01%TFA) B:ACN(0.01%TFA)
 Gradient: 5% to 95%B within 1.3 min
 Flow Rate :1.8ml/min
 Column :SunFire C18, 4.6*50mm,3.5um A-RP-392
 Oven Temperature : 45C



Integration Results for DAD1 A, Sig=214,4 Ref=off

RetTim	Width	Area	Height	Area%	MS (+)
1.83	0.02	7.14	7.04	0.49	157
1.88	0.02	19.59	16.79	1.35	157
1.95	0.02	1427.22	1111.30	98.03	558
2.14	0.02	1.91	1.54	0.13	114

Integration Results for DAD1 B, Sig=254,4 Ref=off

RetTim	Width	Area	Height	Area%	MS (+)
1.83	0.02	1.57	1.53	0.23	157
1.88	0.02	4.90	3.73	0.71	157
1.95	0.02	677.54	525.85	98.40	558
2.08	0.02	0.34	0.29	0.05	114
2.14	0.03	4.23	1.84	0.61	114

Integration Results for ELS1 A, ELSD Signal

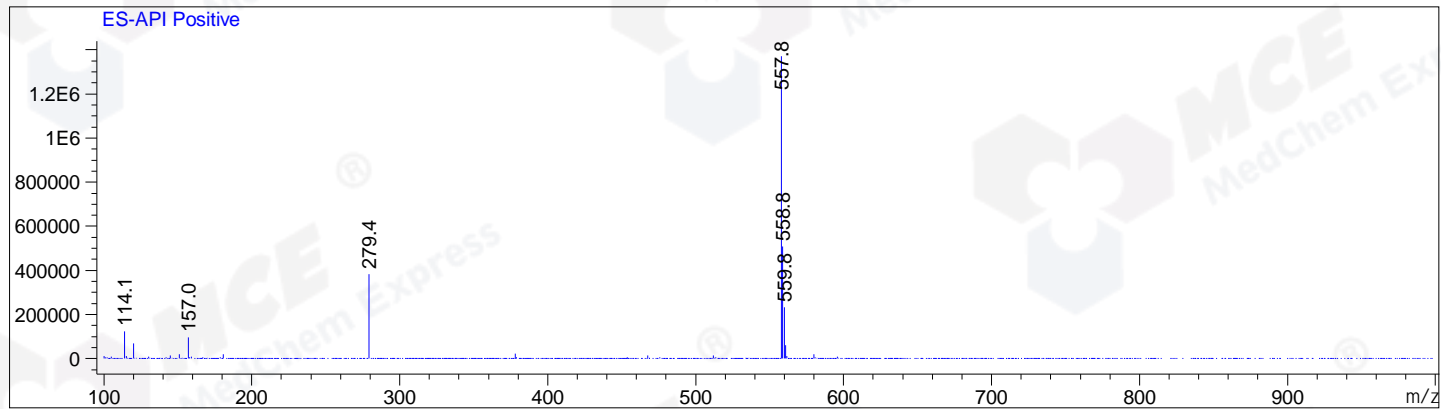
RetTim	Width	Area	Height	Area%	MS (+)
--------	-------	------	--------	-------	--------

2.06 0.07 44.91 10.40 100.00 558

Integration Results for MSD1 TIC, MS File

RetTim	Width	Area	Height	Area%	MS(+)
1.98	0.06	25261460.00	6699934.00	100.00	558

Ret. Time: 1.98 <<<< POSITIVE SPECTRA >>>>



*** End of Report ***