

File ..\Data\2018\20180910\20180910\XT5894-011-2.D Tgt Mass (CHM):

Injection Date : 10 Sep 18 10:19 am +0800 Seq. Line : 24

Sample Name : XT5894-011-2 Location : P1-B-09

Acq. Operator : SYSTEM Inj : 1

Spec. Reported : MS Integration Inj Volume : 1 ul

Acq. Method : D:\LCMS03\Data\2018\20180910\20180910\1-POS-3MIN.M

Analysis Method : D:\LCMS03\Data\2018\20180910\20180910\1-POS-3MIN.M

Catalog No : HY-112534 Batch#32587

Method Info : Mobile Phase: A: water(0.01%TFA) B:ACN(0.01%TFA)

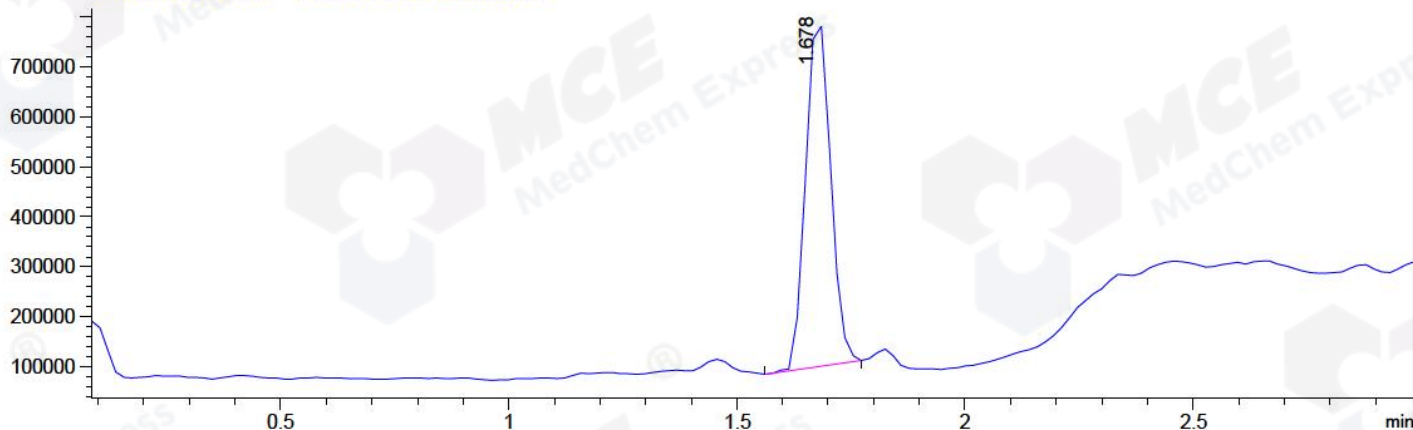
Gradient: 5% to 95%B within 1.3 min

Flow Rate :1.8ml/min

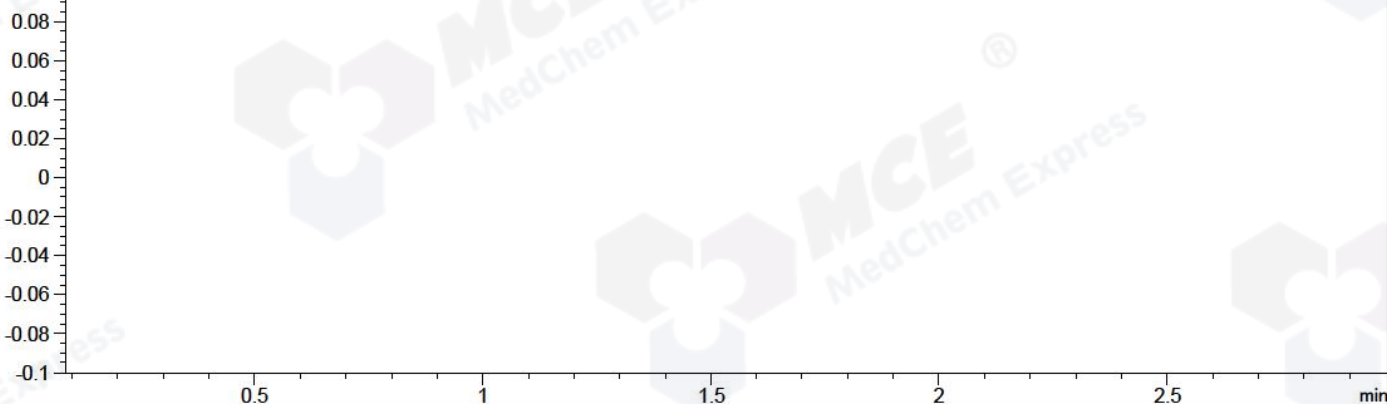
Column :SunFire C18, 4.6\*50mm,3.5um A-RP-186

Oven Temperature : 45C

MSD1 TIC, MS File ES-API, Pos, Scan, Frag: 70



Ion 1, MSD1 1, Target Mass 0 +H Positive, EIC=0.7:1.7

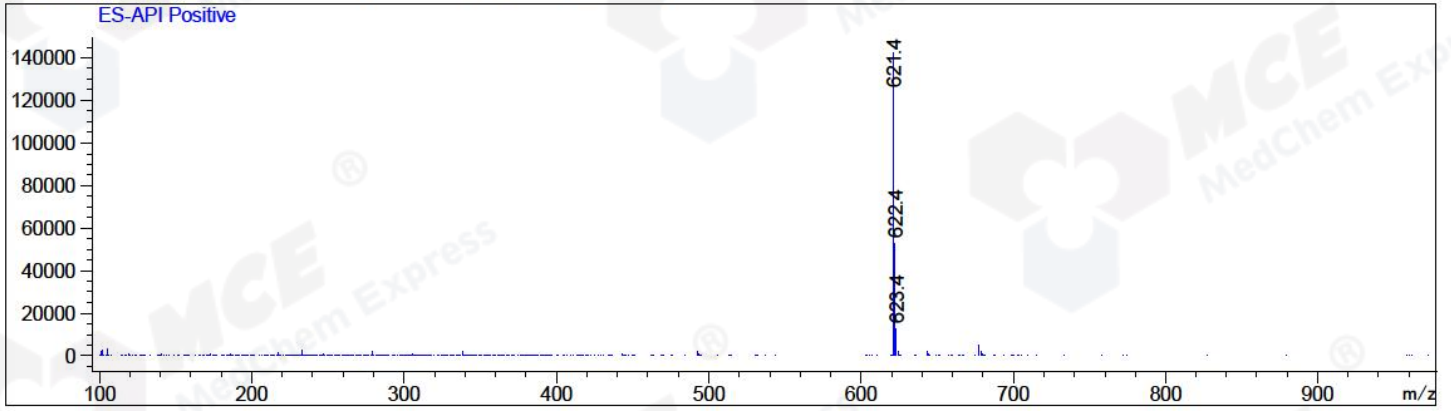


Integration Results for MSD1 TIC, MS File

RetTim	Width	Area	Height	Area%	MS (+)
1.68	0.06	2637492.25	702675.75	100.00	621

Ret. Time: 1.68

<<<< POSITIVE SPECTRA >>>>



\*\*\* End of Report \*\*\*