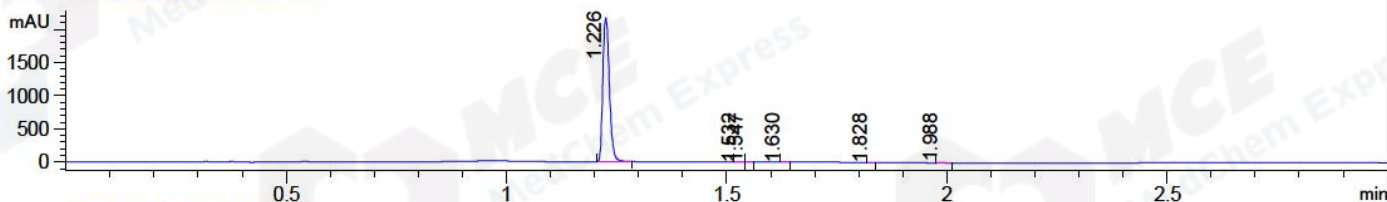


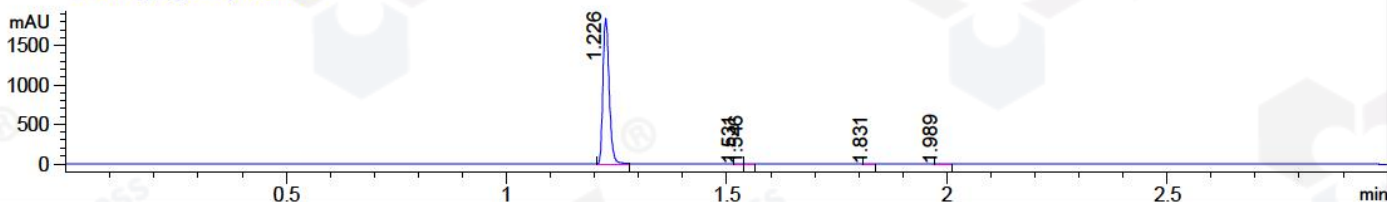
File ..1\DATA\2018\20181030\470\BIZ2018-O30-CXL4.D Tgt Mass (CHM):

Injection Date : 30 Oct 18 5:07 pm +0800 Seq. Line : 95
 Sample Name : BIZ2018-O30-CXL4 Location : P2-F-03
 Acq. Operator : LQ_1052 Inj : 1
 Spec. Reported : MS Integration Inj Volume : 1 ul
 Acq. Method : D:\Chem32\1\data\2018\20181030\470\1-POS-3MIN-1.M
 Analysis Method : D:\CHEM32\1\DATA\2018\20181030\470\1-POS-3MIN-1.M
 Catalog No : HY-112569 Batch#33824 A-RP-314
 Method Info : Mobile Phase: A: water(0.01%TFA) B:ACN(0.01%TFA)
 Gradient: 5% to 95%B within 1.3 min
 Flow Rate :1.8ml/min
 Column :SunFire C18, 4.6*50mm,3.5um A-RP-314
 Oven Temperature : 45□

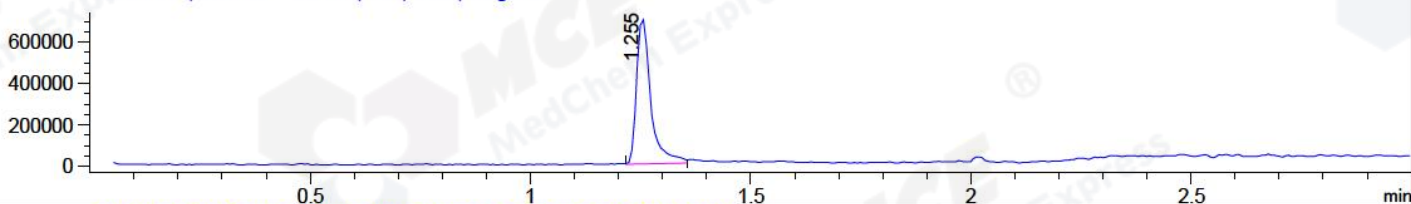
DAD1 B, Sig=214,4 Ref=off



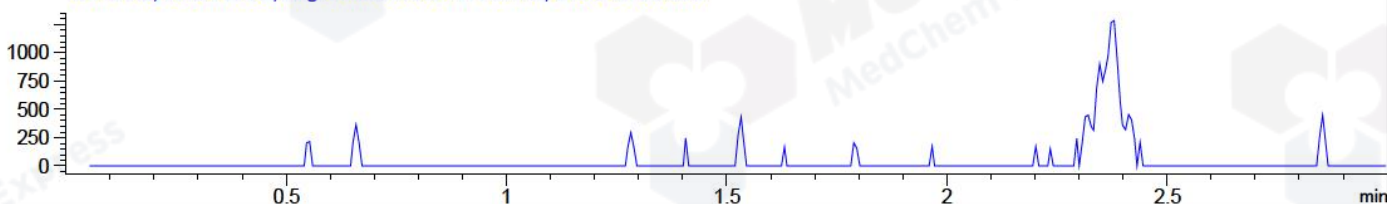
DAD1 C, Sig=254,4 Ref=off



MSD1 TIC, MS File ES-API, Pos, Scan, Frag: 70



Ion 366.2, MSD1 366.2, Target Mass 365.2 +H Positive, EIC=365.9:366.9



Integration Results for DAD1 B, Sig=214,4 Ref=off

RetTim	Width	Area	Height	Area%	MS (+)
1.23	0.02	2262.29	2176.30	99.37	330
1.53	0.02	2.50	2.67	0.11	330
1.55	0.01	0.96	1.44	0.04	261
1.63	0.02	0.94	0.94	0.04	330
1.83	0.01	0.96	1.16	0.04	330
1.99	0.01	8.97	10.10	0.39	459

Integration Results for DAD1 C, Sig=254,4 Ref=off

RetTim	Width	Area	Height	Area%	MS (+)
1.23	0.01	1803.79	1838.47	99.53	330
1.53	0.01	1.38	1.57	0.08	330
1.55	0.01	0.95	1.09	0.05	261
1.83	0.02	0.61	0.61	0.03	330
1.99	0.01	5.56	6.04	0.31	459

Integration Results for MSD1 TIC, MS File

1.25 0.03 1579596.13 705451.06 100.00 330

RetTim	Width	Area	Height	Area%	MS (+)
--------	-------	------	--------	-------	--------

Ret. Time: 1.25

<<<< POSITIVE SPECTRA >>>>

ES-API Positive

