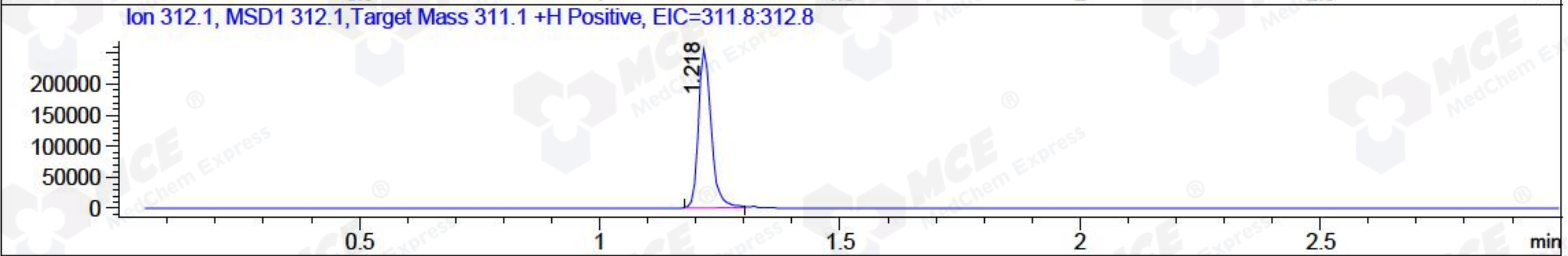
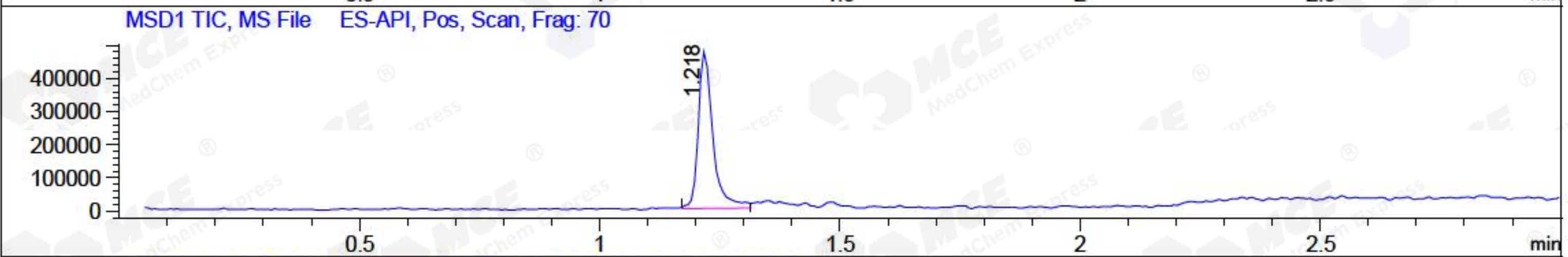
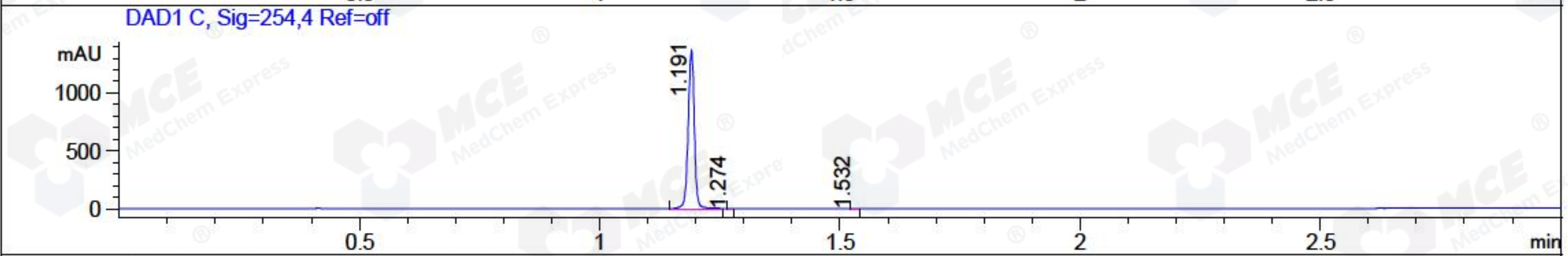
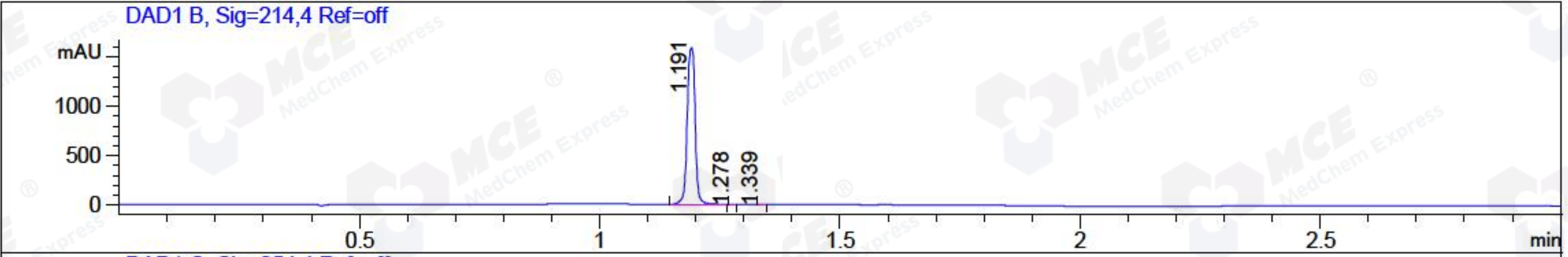


File ..1\DATA\2018\20181018\460\BIZ2018-018-CXL4.D Tgt Mass (CHM):
 Injection Date : 18 Oct 18 5:55 pm +0800 Seq. Line : 7
 Sample Name : BIZ2018-018-CXL4 Location : P1-A-08
 Acq. Operator : LQ_1052 Inj : 1
 Spec. Reported : MS Integration Inj Volume : 1 ul
 Acq. Method : D:\Chem32\1\data\2018\20181018\460\1-POS-3MIN-1.M
 Analysis Method : D:\CHEM32\1\DATA\2018\20181018\460\1-POS-3MIN-1.M
 Catalog No : HY-112831 Batch#33546 A-RP-314
 Method Info : Mobile Phase: A: water(0.01%TFA) B:ACN(0.01%TFA)
 Gradient: 5% to 95%B within 1.3 min
 Flow Rate :1.8ml/min
 Column :SunFire C18, 4.6*50mm,3.5um A-RP-314
 Oven Temperature : 45□



Integration Results for DAD1 B, Sig=214,4 Ref=off

RetTim	Width	Area	Height	Area%	MS (+)
1.19	0.02	1816.70	1589.33	99.97	312
1.28	0.01	0.25	0.41	0.01	312
1.34	0.01	0.35	0.62	0.02	312

Integration Results for DAD1 C, Sig=254,4 Ref=off

RetTim	Width	Area	Height	Area%	MS (+)
1.19	0.01	1209.33	1369.98	99.98	312
1.27	0.01	0.09	0.16	0.01	312
1.53	0.01	0.12	0.15	0.01	ND

Integration Results for MSD1 TIC, MS File

RetTim	Width	Area	Height	Area%	MS (+)
1.22	0.03	1008913.88	475175.28	100.00	312

Ret. Time: 1.22

<<<< POSITIVE SPECTRA >>>>

ES-API Positive

