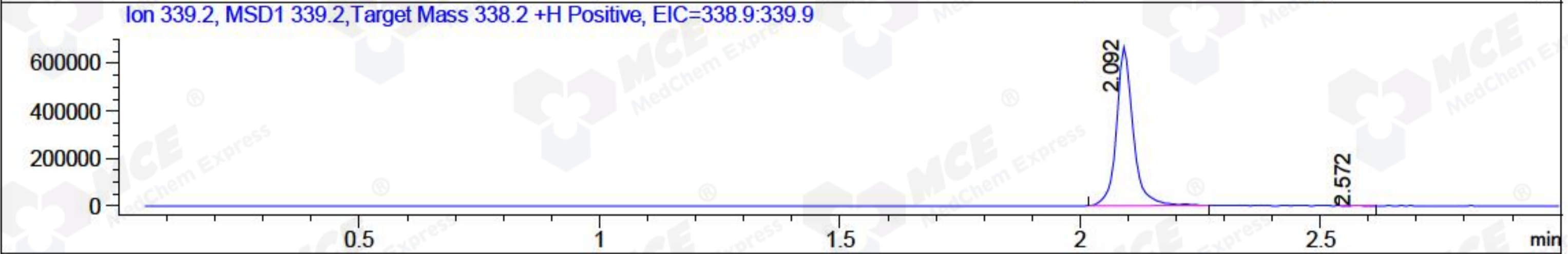
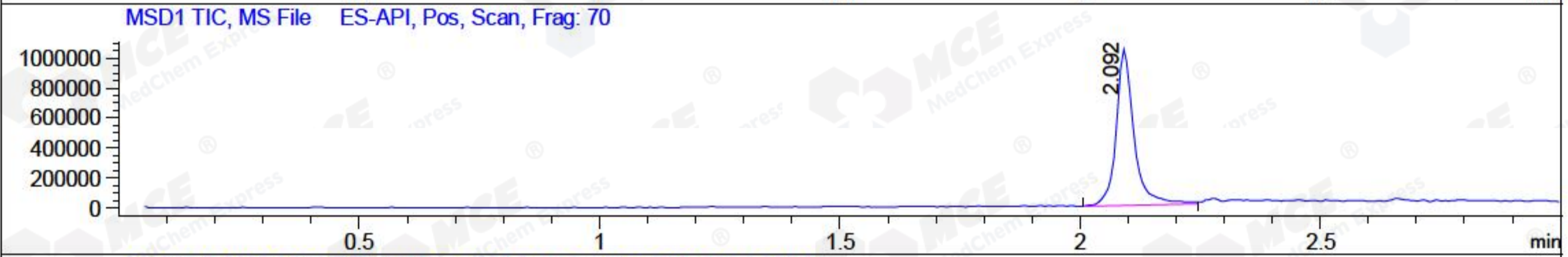
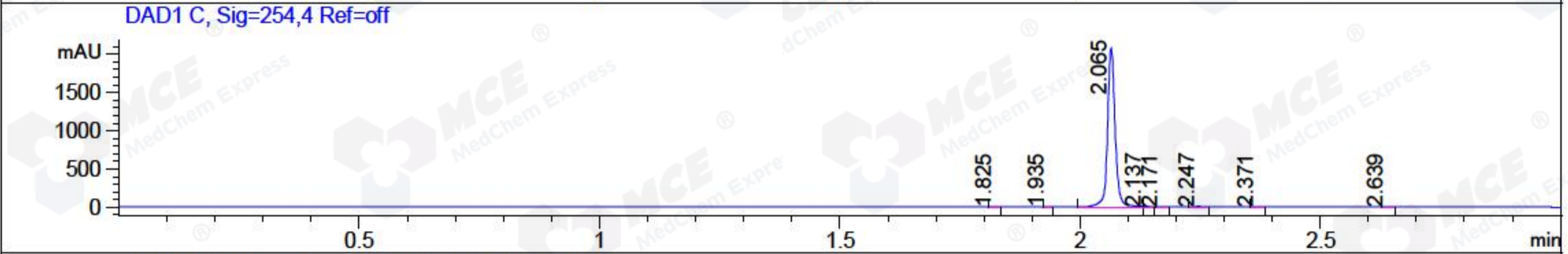
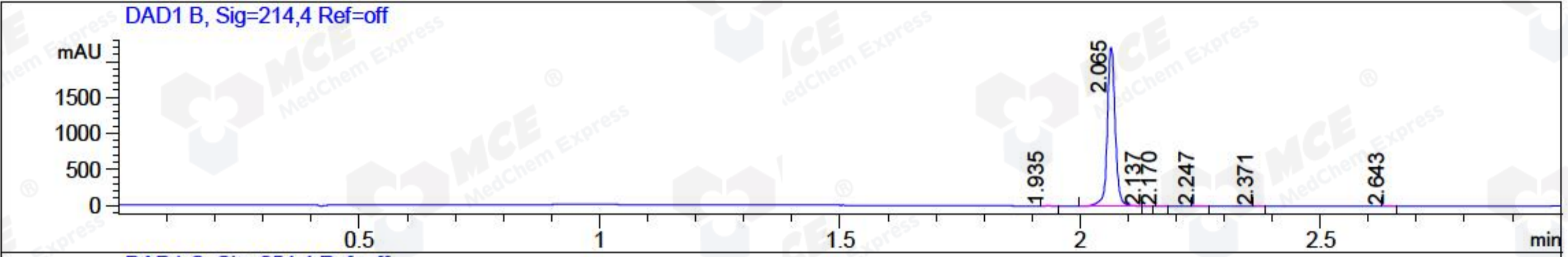


File ..1\DATA\2018\20181025\460\BIZ2018-O24-CXL4.D Tgt Mass (CHM):  
 Injection Date : 25 Oct 18 11:25 am +0800 Seq. Line : 26  
 Sample Name : BIZ2018-O24-CXL4 Location : P2-D-08  
 Acq. Operator : LQ\_1052 Inj : 1  
 Spec. Reported : MS Integration Inj Volume : 1 ul  
 Acq. Method : D:\Chem32\1\data\2018\20181025\460\1-POS-3MIN-1.M  
 Analysis Method : D:\CHEM32\1\DATA\2018\20181025\460\1-POS-3MIN-1.M  
 Catalog No : HY-112842 Batch#33655 A-RP-314  
 Method Info : Mobile Phase: A: water(0.01%TFA) B:ACN(0.01%TFA)  
 Gradient: 5% to 95%B within 1.3 min  
 Flow Rate :1.8ml/min  
 Column :SunFire C18, 4.6\*50mm,3.5um A-RP-314  
 Oven Temperature : 45



Integration Results for DAD1 B, Sig=214,4 Ref=off

RetTim	Width	Area	Height	Area%	MS (+)
1.93	0.02	5.89	5.31	0.23	ND
2.06	0.02	2541.11	2208.56	99.26	339
2.14	0.02	4.48	4.51	0.18	339
2.17	0.01	2.59	3.06	0.10	339
2.25	0.02	4.07	3.98	0.16	339
2.37	0.01	1.01	1.16	0.04	159
2.64	0.02	0.93	0.80	0.04	159

Integration Results for DAD1 C, Sig=254,4 Ref=off

RetTim	Width	Area	Height	Area%	MS (+)
1.83	0.01	0.31	0.34	0.01	ND
1.93	0.01	1.61	2.17	0.07	ND
2.06	0.02	2281.97	2086.65	99.38	339
2.14	0.01	3.83	4.66	0.17	339
2.17	0.01	2.62	2.97	0.11	339
2.25	0.02	4.61	4.39	0.20	339
2.37	0.02	0.76	0.77	0.03	159

2.64 0.02 0.52 0.49 0.02 159

Integration Results for MSD1 TIC, MS File

RetTim	Width	Area	Height	Area%	MS (+)
2.09	0.04	2685434.25	1038037.38	100.00	339

Ret. Time: 2.09

<<<< POSITIVE SPECTRA >>>>

ES-API Positive

