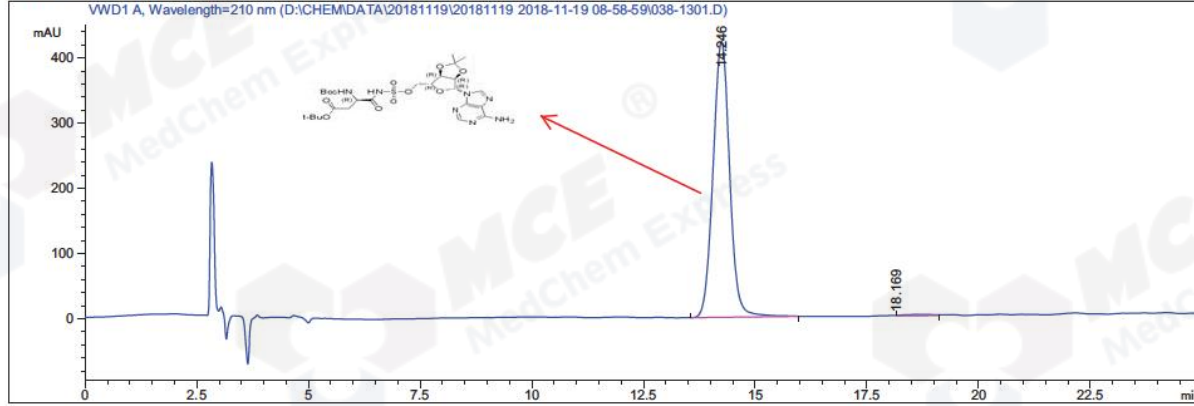


```

=====
Acq. Operator   : ZXM                               Seq. Line :   13
Acq. Instrument : HPLC-04                           Location  : Vial 38
Injection Date  : 11/19/2018 12:33:15 PM            Inj       :    1
                                                    Inj Volume: 5.0 µl
Acq. Method    : D:\CHEM\DATA\20181119\20181119 2018-11-19 08-58-59\HM-560C_2,210NM,C1.M
Last changed   : 11/19/2018 12:37:08 PM by ZXM
                (modified after loading)
Analysis Method: D:\CHEM\METHODS\HM-297D_5A,C2.M
Last changed   : 11/28/2018 1:22:09 PM by ZXM
                (modified after loading)
Catalog No     : HY-112860 Batch#34671
                C-NP-47
=====
  
```

Additional Info : Peak(s) manually integrated



=====
 Area Percent Report
 =====

```

Sorted By      :      Signal
Multiplier:    :      1.0000
Dilution:      :      1.0000
Use Multiplier & Dilution Factor with ISTDs
  
```

Signal 1: VWD1 A, Wavelength=210 nm

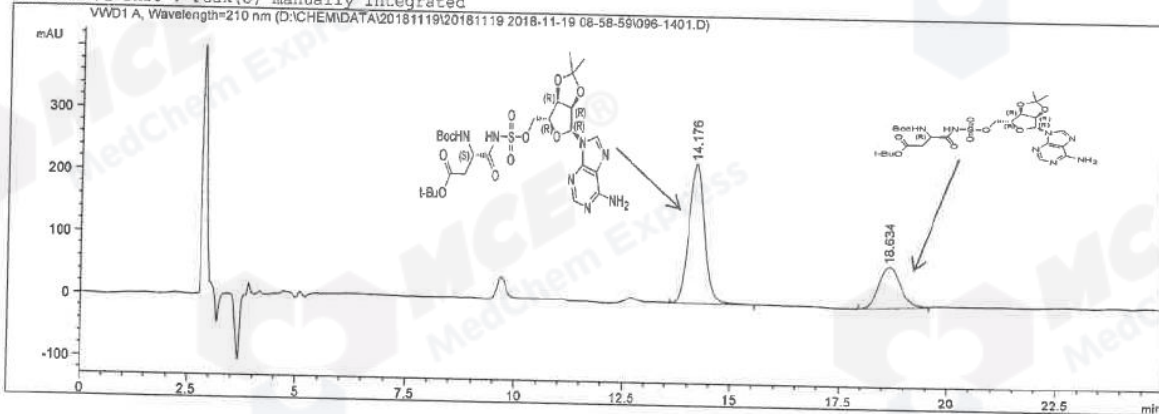
Peak #	RetTime [min]	Type	Width [min]	Area mAU*s	Height [mAU]	Area %
1	14.246	MM R	0.4301	1.09380e4	423.89301	99.2333
2	18.169	MM R	0.7167	84.50567	6.36538e-1	0.7667

Totals : 1.10225e4 424.52954

=====
 *** End of Report ***

Acq. Operator : ZXM
 Acq. Instrument : HPLC-04
 Injection Date : 11/19/2018 12:59:46 PM
 Seq. Line : 14
 Location : Vial 96
 Inj : 1
 Inj Volume : 5.0 µl
 Acq. Method : D:\CHEM\DATA\20181119\20181119 2018-11-19 08-58-59\HM-560C_2,210NM,C1.M
 Last changed : 11/19/2018 12:37:08 PM by ZXM
 (modified after loading)
 Analysis Method : D:\CHEM\METHODS\HM-560C_2,210NM,C1.M
 Last changed : 11/19/2018 9:53:01 AM by ZXM
 (modified after loading)
 C-NP-47

Additional Info : Peak(s) manually integrated



Area Percent Report

Sorted By : Signal
 Multiplier: : 1.0000
 Dilution: : 1.0000
 Use Multiplier & Dilution Factor with ISTDs

Signal 1: VWD1 A, Wavelength=210 nm

Peak #	RetTime [min]	Type	Width [min]	Area mAU	Area *s	Height [mAU]	Area %
1	14.176	BV	0.3901	5698.53223	225.03073	225.03073	71.1480
2	18.634	BV	0.5344	2310.87817	66.84510	66.84510	28.8520

Totals : 8009.41040 291.87583

*** End of Report ***