

File ..1\DATA\2019\20190114\548\BIZ2019-111-CXL2.D Tgt Mass (CHM):

Injection Date : 14 Jan 19 5:34 pm +0800 Seq. Line : 12

Sample Name : BIZ2019-111-CXL2 Location : P2-E-09

Acq. Operator : LQ_1052 Inj : 1

Spec. Reported : MS Integration Inj Volume : 1 ul

Acq. Method : D:\Chem32\1\data\2019\20190114\548\1-POS-3MIN-1.M

Analysis Method : D:\CHEM32\1\DATA\2019\20190114\548\1-POS-3MIN-1.M

Catalog No : HY-114141 Batch#36738 BY DMSO+MEOH

Method Info : Mobile Phase: A: water(0.01%TFA) B:ACN(0.01%TFA)

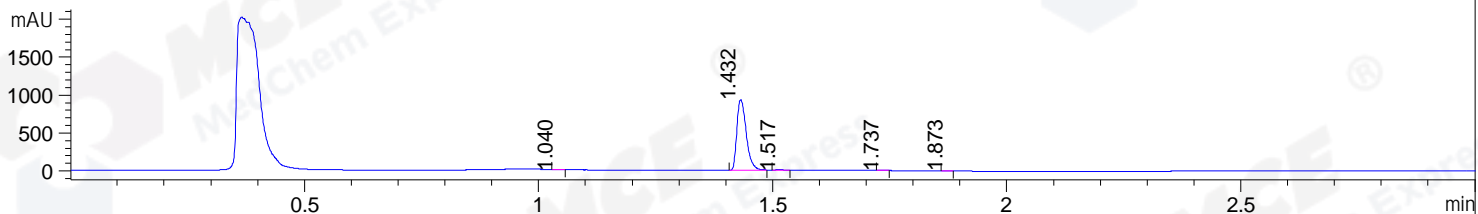
Gradient: 5% to 95%B within 1.3 min

Flow Rate :1.8ml/min

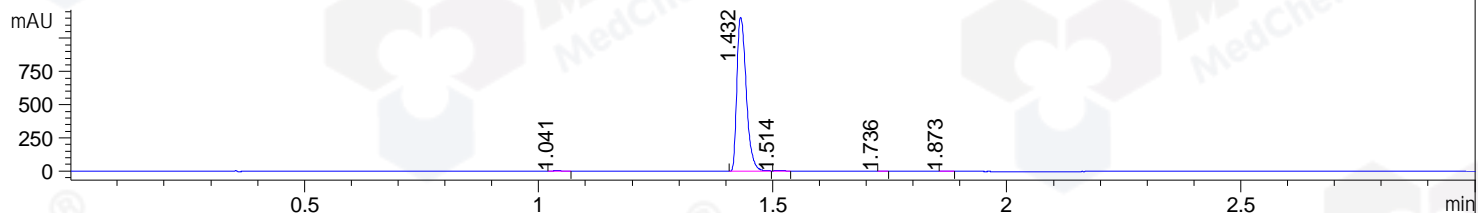
Column :SunFire C18, 4.6*50mm,3.5um A-RP-314

Oven Temperature : 45

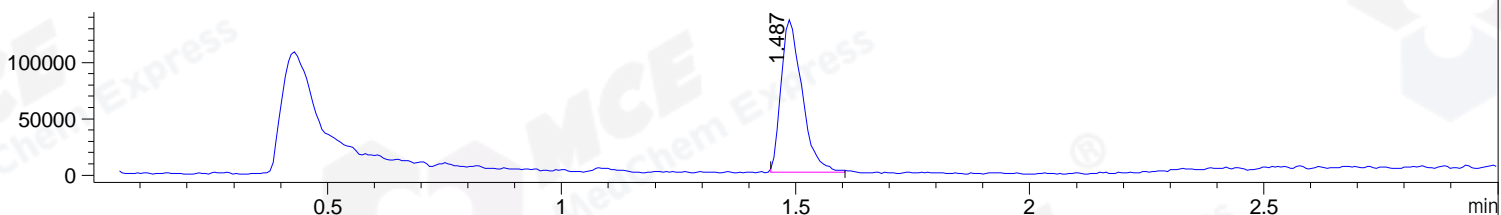
DAD1 B, Sig=214,4 Ref=off



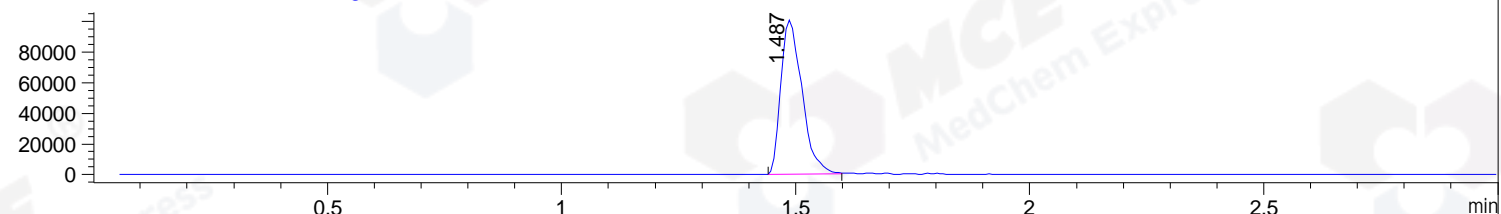
DAD1 C, Sig=254,4 Ref=off



MSD1 TIC, MS File ES-API, Pos, Scan, Frag: 70



Ion 502.2, MSD1 502.2, Target Mass 501.2 +H Positive, EIC=501.9:502.9



Integration Results for DAD1 B, Sig=214,4 Ref=off

RetTim	Width	Area	Height	Area%	MS (+)
1.04	0.02	3.54	3.73	0.27	157
1.43	0.02	1299.60	932.03	99.06	502
1.52	0.02	4.59	3.75	0.35	502
1.74	0.02	1.40	1.42	0.11	ND
1.87	0.01	2.76	3.12	0.21	ND

Integration Results for DAD1 C, Sig=254,4 Ref=off

RetTim	Width	Area	Height	Area%	MS (+)
1.04	0.01	5.93	6.39	0.37	157
1.43	0.02	1610.24	1160.00	99.17	502
1.51	0.02	5.19	4.29	0.32	502
1.74	0.01	0.63	0.71	0.04	ND
1.87	0.02	1.78	1.87	0.11	ND

Integration Results for MSD1 TIC, MS File

RetTim	Width	Area	Height	Area%	MS (+)
--------	-------	------	--------	-------	--------

1.49 0.05 425276.22 135632.05 100.00 502

Ret. Time: 1.49

<<<< POSITIVE SPECTRA >>>>

ES-API Positive

