

Catalog No: HY-114459 Batch# 38930

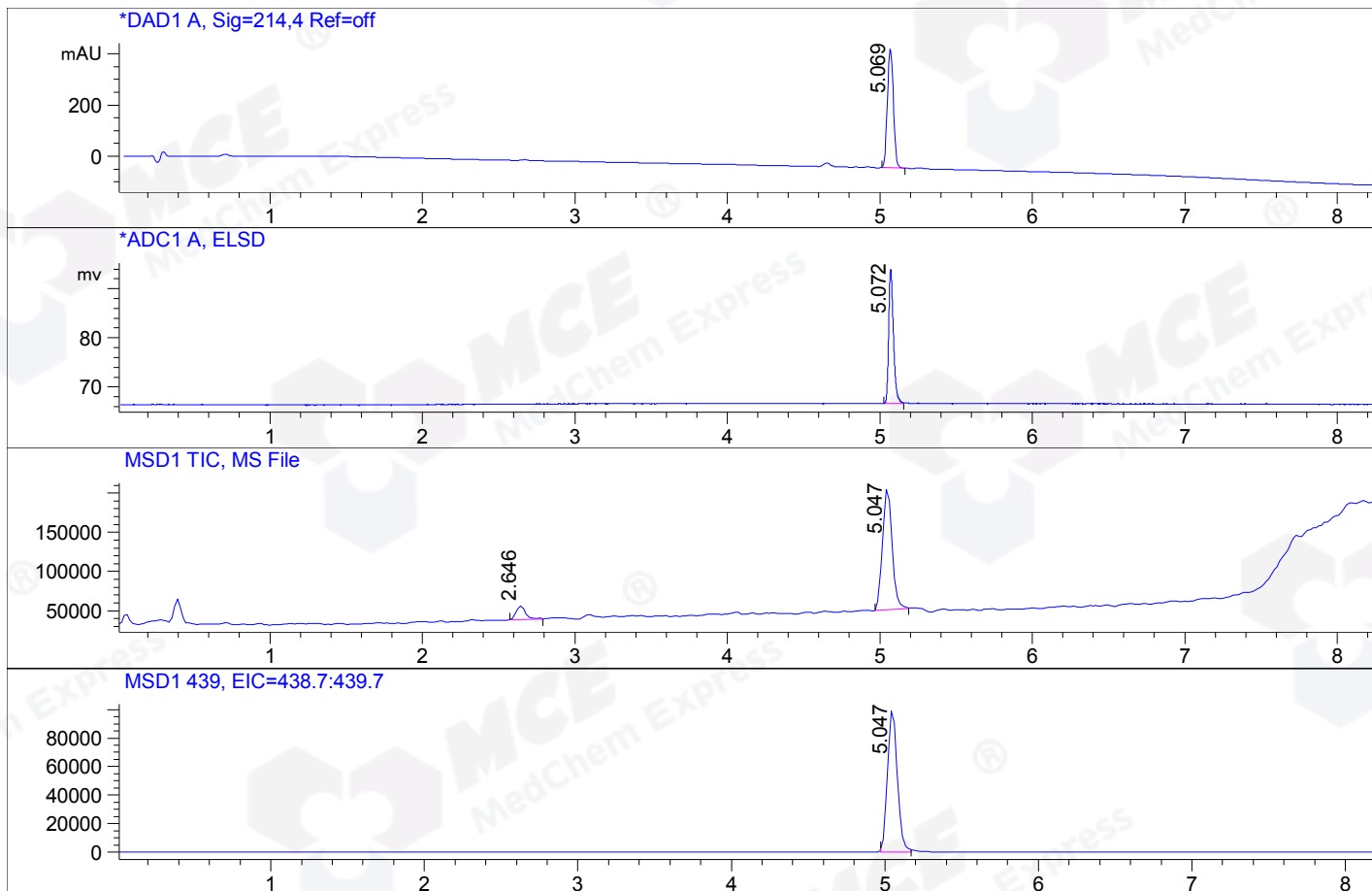
Method: Column: Gemini-NX C18 (2.0x 50 mm, 3.0 um)

Mobile phase: H2O(0.01%TFA) (A) / ACN(0.01%TFA) (B)

Elution program: Gradient from 5 to 100% of B in 7 min at 1.0 ml/min

Temperature: 50 °C

Detection: UV (214 , 4 nm) and MS (ESI, Pos mode ,70 to 800 amu) ->



Area % Table of Signal DAD1 A, Sig=214,4

RET.T	Height	Area	Area%
5.069	467	1295	100.00

