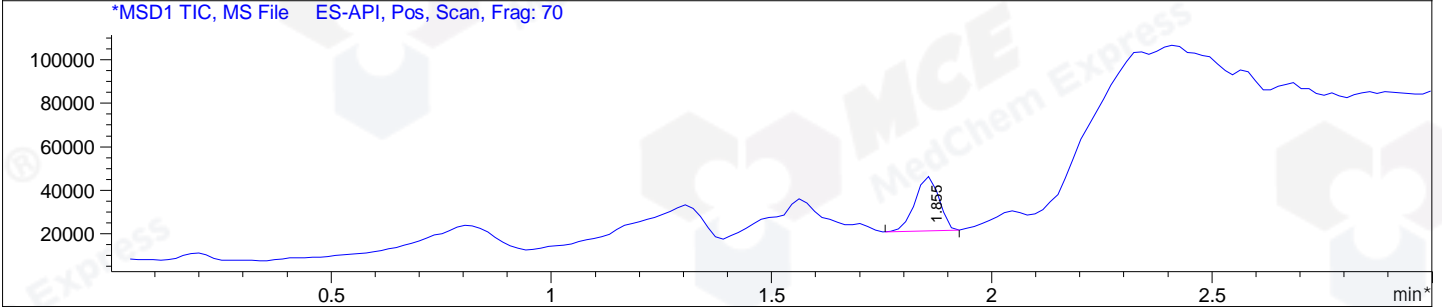
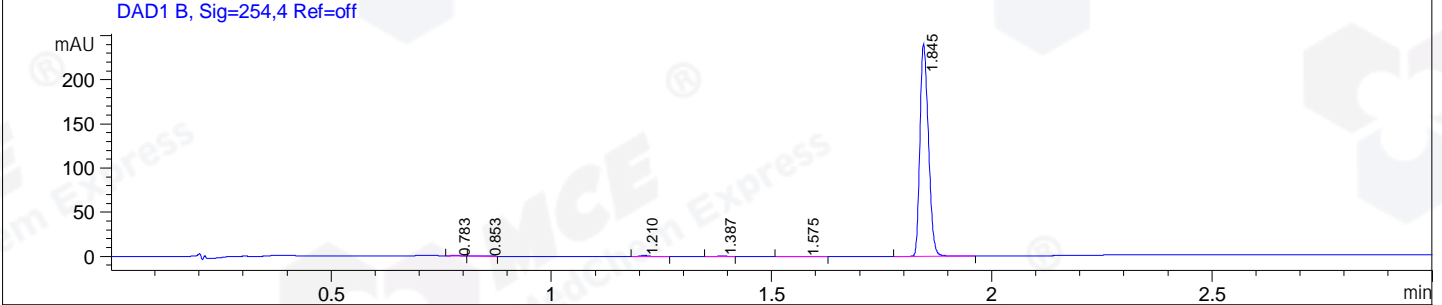
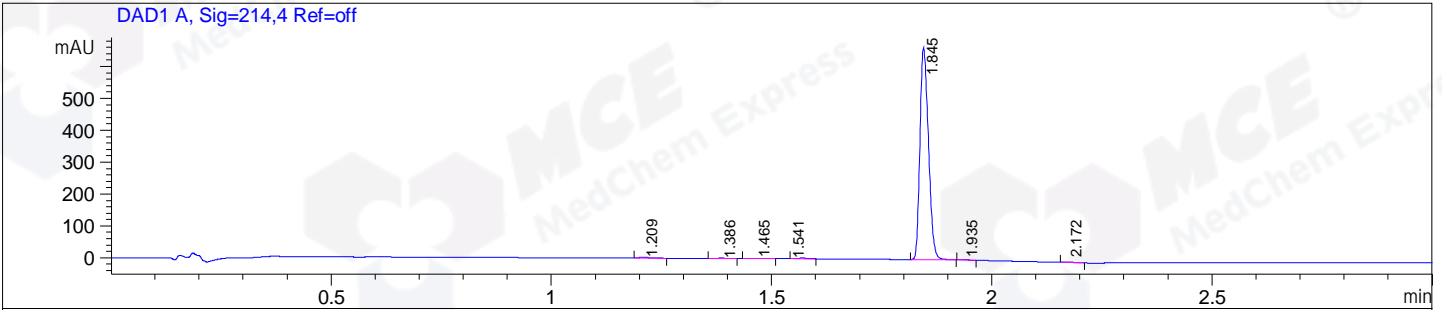


File E:\ChemStation\1\DATA\2024\2024-08\2024-08-21\CPK2024-820-104387-UPLC-MS-10-042584.D
 Injection Date : 21-Aug-24, 14:30:09 Tgt Mass(EZX) :
 Sample Name : CPK2024-820-104387 Location : P1-F-01
 Acq. Operator : LY_2278 Inj : 1
 Spec. Reported : MS Integration Inj Volume : 5 ul
 Acq. Method : E:\ChemStation\1\Methods\1-POS-UPLC3.0MIN(1.2)(150-1000).M
 Analysis Method : E:\CHEMSTATION\1\METHODS\1-POS-UPLC3.0MIN(1.2)(150-1000).M
 CAS NO. : 1419320-73-2
 Method Info : Mobile Phase: A: water(0.01%TFA) B:ACN(0.01%TFA)
 Gradient: 5% to 95%B within 2.0 min
 Flow Rate :1.2ml/min
 Column :Shim-pack Scepter C18-120, 3.0*33mm,3um
 Oven Temperature : 45C



Integration Results for DAD1 A, Sig=214,4 Ref=off

RetTim	Width	Area	Height	Area%
1.21	0.02	4.36	3.49	0.48
1.39	0.02	0.96	0.67	0.11
1.46	0.03	1.75	0.84	0.19
1.54	0.03	3.34	-0.00	0.37
1.85	0.02	893.79	663.12	98.42
1.94	0.02	1.50	1.20	0.16
2.17	0.02	2.40	1.92	0.26

Integration Results for DAD1 B, Sig=254,4 Ref=off

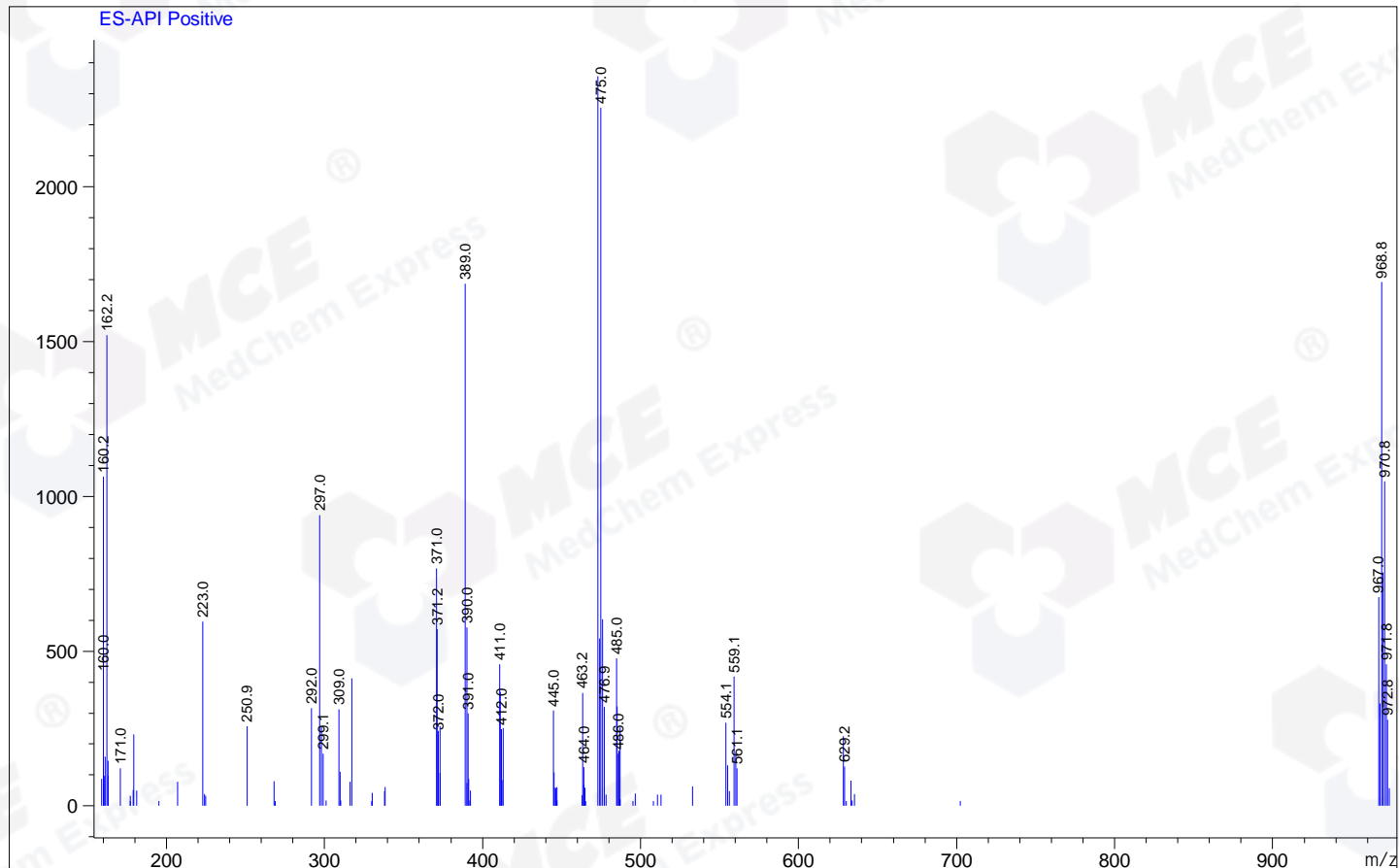
RetTim	Width	Area	Height	Area%
0.78	0.02	0.77	0.58	0.23
0.85	0.03	0.99	0.57	0.30
1.21	0.02	1.62	1.19	0.49
1.39	0.02	1.30	0.97	0.39
1.57	0.03	0.80	0.40	0.24
1.85	0.02	324.82	240.24	98.34

Integration Results for MSD1 TIC, MS File

RetTim	Width	Area	Height	Area%
1.85	0.06	95080.77	25079.84	100.00

Ret. Time: 1.85

<<<< POSITIVE SPECTRA >>>>



*** End of Report ***