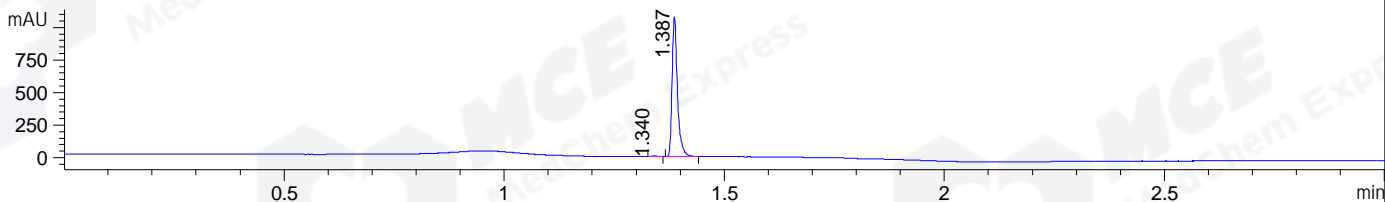
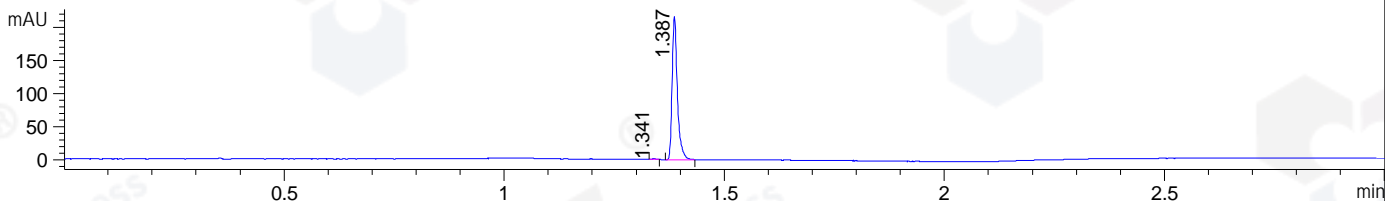


File ..\DATA\2020\20200612\991\BIZ2020-612-WMX6-.D Tgt Mass (CHM):
 Injection Date : 12 Jun 20 5:41 pm +0800 Seq. Line : 91
 Sample Name : BIZ2020-612-WMX6 Location : P1-D-05
 Acq. Operator : ZJ_1432 Inj : 1
 Spec. Reported : MS Integration Inj Volume : 0.3 ul
 Acq. Method : D:\Chem32\1\data\2020\20200612\991\1-POS-3MIN.M
 Analysis Method : D:\CHEM32\1\DATA\2020\20200612\991\1-POS-3MIN.M
 Catalog No : HY-116387
 Method Info : Mobile Phase: A: water(0.01%TFA) B:ACN(0.01%TFA)
 Gradient: 5% to 95%B within 1.3 min
 Flow Rate :1.8ml/min
 Column :SunFire C18, 4.6*50mm,3.5um A-RP-607
 Oven Temperature : 45□

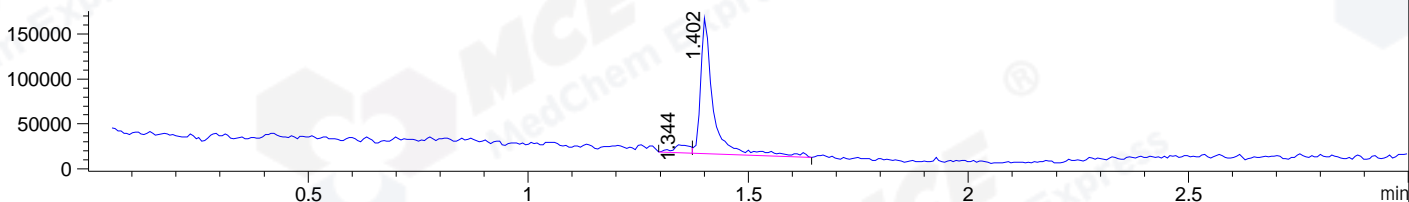
DAD1 B, Sig=214,4 Ref=off



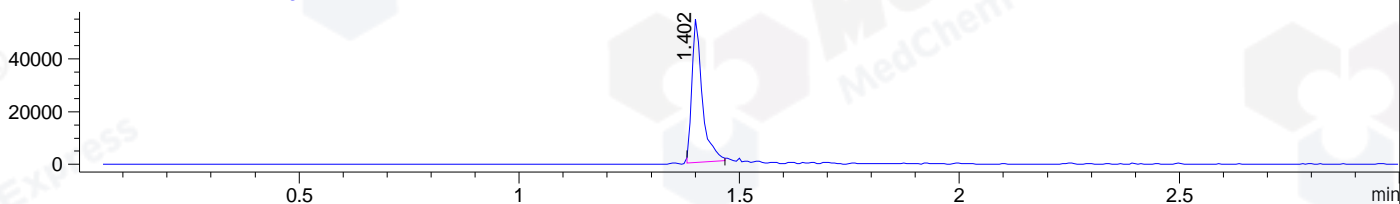
DAD1 C, Sig=254,4 Ref=off



MSD1 TIC, MS File ES-API, Pos, Scan, Frag: 70



Ion 394, MSD1 394, Target Mass 393 +H Positive, EIC=393.7:394.7



Integration Results for DAD1 B, Sig=214,4 Ref=off

RetTim	Width	Area	Height	Area%	MS (+)
1.34	0.01	3.89	4.68	0.43	157
1.39	0.01	907.02	1078.23	99.57	394

Integration Results for DAD1 C, Sig=254,4 Ref=off

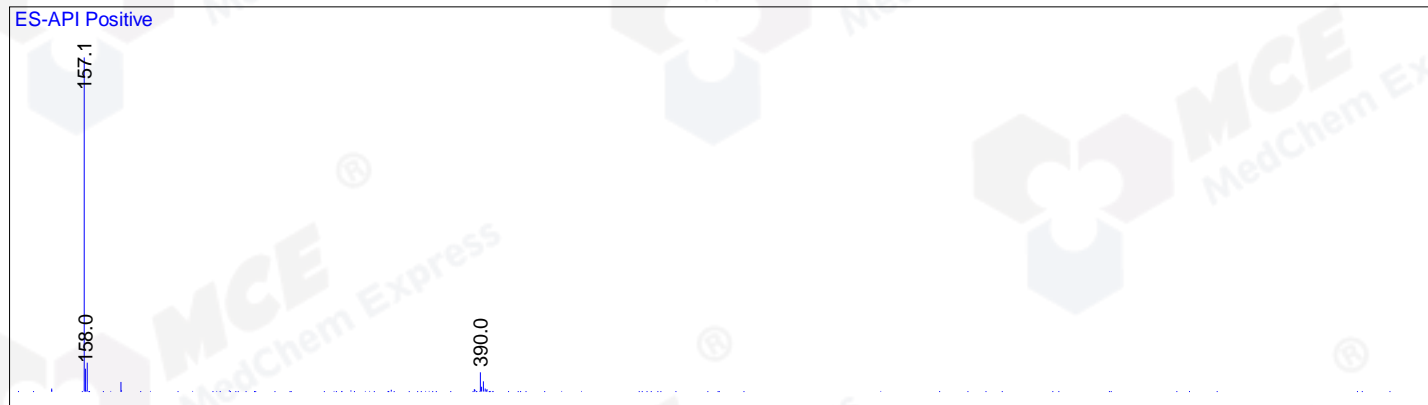
RetTim	Width	Area	Height	Area%	MS (+)
1.34	0.01	0.61	0.94	0.34	157
1.39	0.01	178.41	216.85	99.66	394

Integration Results for MSD1 TIC, MS File

RetTim	Width	Area	Height	Area%	MS (+)
1.34	0.03	22027.88	8835.16	6.75	157
1.40	0.03	304126.50	151123.23	93.25	157

Ret. Time: 1.34

<<<< POSITIVE SPECTRA >>>>



Ret. Time: 1.40

