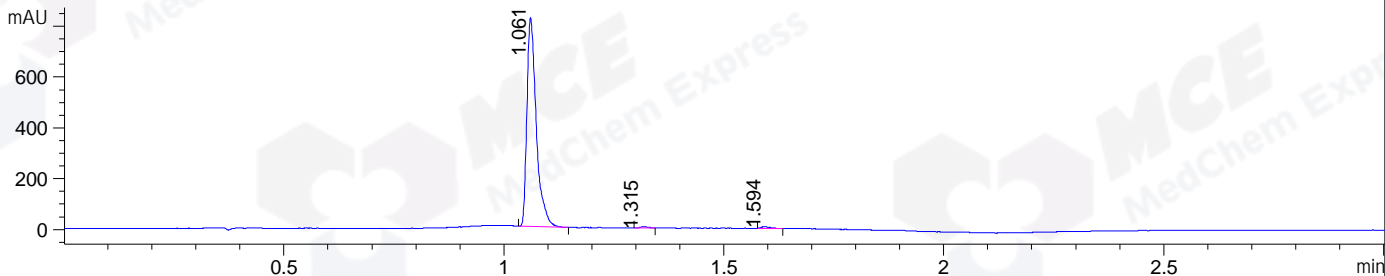
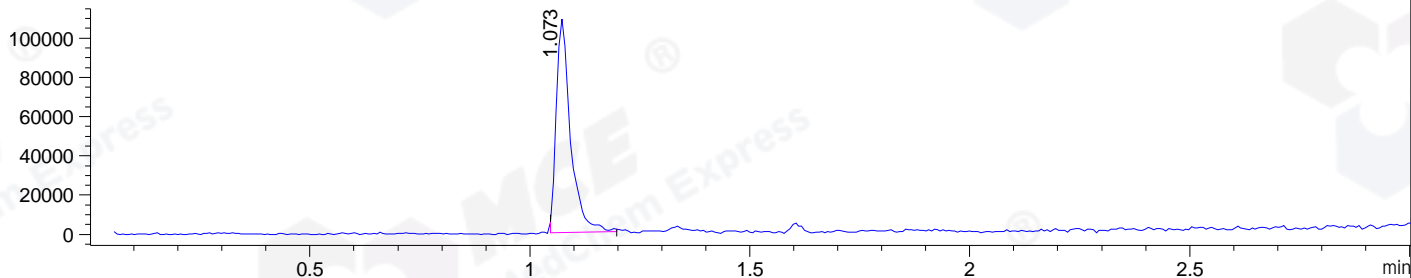


File ..\DATA\2019\20191207\786\BIZ2019-D06-CXL1.D Tgt Mass (CHM):
 Injection Date : 7 Dec 19 12:27 pm +0800 Seq. Line : 12
 Sample Name : BIZ2019-D06-CXL1 Location : P1-E-05
 Acq. Operator : ZJ_1432 Inj : 1
 Spec. Reported : MS Integration Inj Volume : 0.7 ul
 Acq. Method : D:\Chem32\1\data\2019\20191207\786\1-POS-3MIN.M
 Analysis Method : D:\CHEM32\1\DATA\2019\20191207\786\1-POS-3MIN.M
 Catalog No : HY-117071 Batch#57326
 Method Info : Mobile Phase: A: water(0.01%TFA) B:ACN(0.01%TFA)
 Gradient: 5% to 95%B within 1.3 min
 Flow Rate :1.8ml/min
 Column :SunFire C18, 4.6*50mm,3.5um A-RP-433
 Oven Temperature : 45□

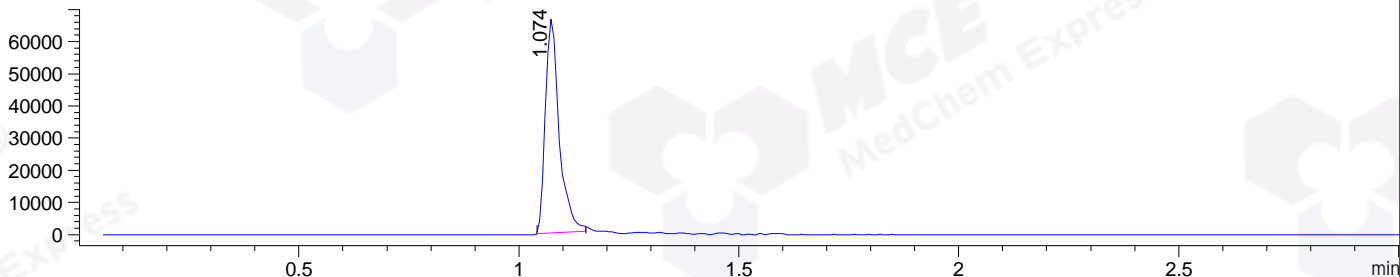
DAD1 B, Sig=214,4 Ref=off



MSD1 TIC, MS File ES-API, Pos, Scan, Frag: 70



Ion 318, MSD1 318, Target Mass 317 +H Positive, EIC=317.7:318.7



Integration Results for DAD1 B, Sig=214,4 Ref=off

RetTim	Width	Area	Height	Area%	MS (+)
1.06	0.02	1216.42	820.35	98.72	318
1.32	0.02	7.06	4.89	0.57	ND
1.59	0.02	8.74	6.74	0.71	ND

Integration Results for MSD1 TIC, MS File

RetTim	Width	Area	Height	Area%	MS (+)
1.07	0.03	245495.77	108803.43	100.00	318

Ret. Time: 1.07

<<<< POSITIVE SPECTRA >>>>

ES-API Positive

