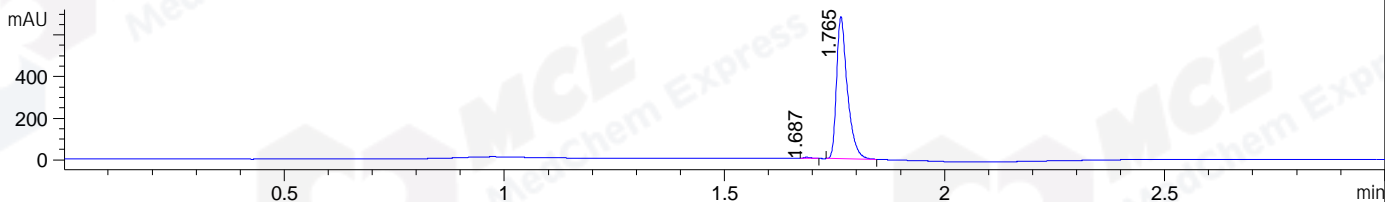
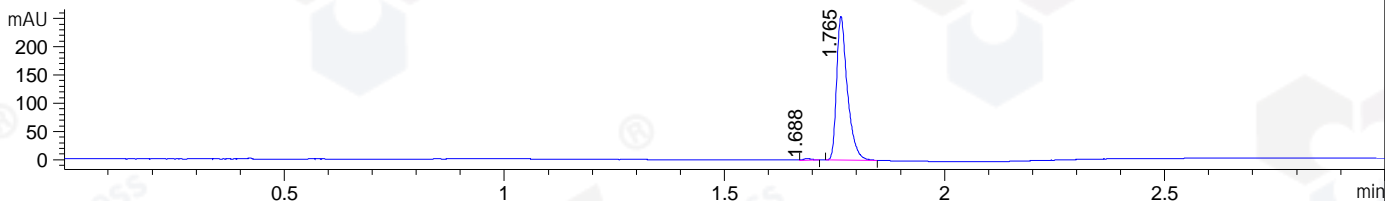


File ..DATA\2019\20190924\721\BIZ2019-923-SCH10-.D Tgt Mass (CHM):
 Injection Date : 24 Sep 19 2:11 pm +0800 Seq. Line : 9
 Sample Name : BIZ2019-923-SCH10 Location : P1-D-06
 Acq. Operator : bgd_1571 Inj : 1
 Spec. Reported : MS Integration Inj Volume : 0.3 ul
 Acq. Method : D:\Chem32\1\data\2019\20190924\721\1-POS-3MIN.M
 Analysis Method : D:\CHEM32\1\DATA\2019\20190924\721\1-POS-3MIN.M
 Catalog No : HY-117508 Batch#46215
 Method Info : Mobile Phase: A: water(0.01%TFA) B:ACN(0.01%TFA)
 Gradient: 5% to 95%B within 1.3 min
 Flow Rate :1.8ml/min
 Column :SunFire C18, 4.6*50mm,3.5um A-RP-433
 Oven Temperature : 45

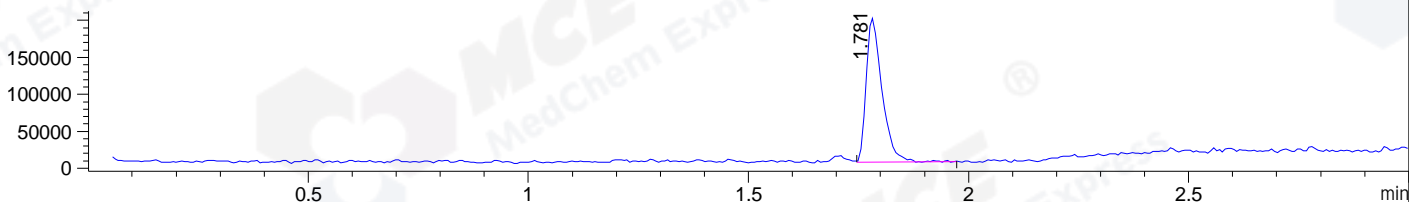
DAD1 B, Sig=214,4 Ref=off



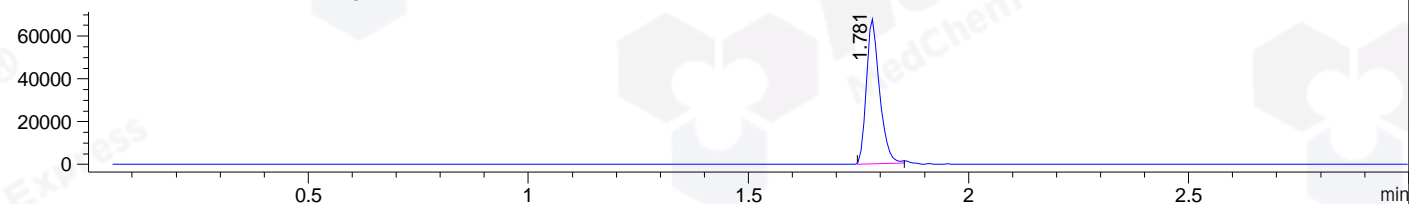
DAD1 C, Sig=254,4 Ref=off



MSD1 TIC, MS File ES-API, Pos, Scan, Frag: 70



Ion 441.08, MSD1 441.08, Target Mass 440.08 +H Positive, EIC=440.78:441.78



Integration Results for DAD1 B, Sig=214,4 Ref=off

RetTim	Width	Area	Height	Area%	MS (+)
1.69	0.02	5.99	5.43	0.51	130
1.76	0.03	1166.71	683.45	99.49	441

Integration Results for DAD1 C, Sig=254,4 Ref=off

RetTim	Width	Area	Height	Area%	MS (+)
1.69	0.02	3.60	2.97	0.82	130
1.76	0.03	435.34	254.97	99.18	441

Integration Results for MSD1 TIC, MS File

RetTim	Width	Area	Height	Area%	MS (+)
1.78	0.04	487655.25	194903.06	100.00	441

Ret. Time: 1.78

<<<< POSITIVE SPECTRA >>>>

ES-API Positive

