

File ..\DATA\2019\20191120\761\BIZ2019-N19-WMX1-.D Tgt Mass (CHM):

Injection Date : 20 Nov 19 10:48 am +0800 Seq. Line : 25

Sample Name : BIZ2019-N19-WMX1 Location : P1-D-05

Acq. Operator : ZJ_1432 Inj : 1

Spec. Reported : MS Integration Inj Volume : 0.4 ul

Acq. Method : D:\Chem32\1\data\2019\20191120\761\1-POS-3MIN.M

Analysis Method : D:\CHEM32\1\DATA\2019\20191120\761\1-POS-3MIN.M

Catalog No : HY-119937 Batch#56975

Method Info : Mobile Phase: A: water(0.01%TFA) B:ACN(0.01%TFA)

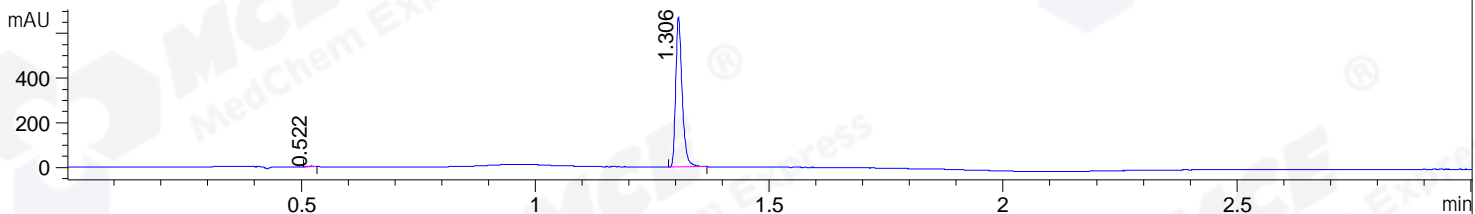
Gradient: 5% to 95%B within 1.3 min

Flow Rate :1.8ml/min

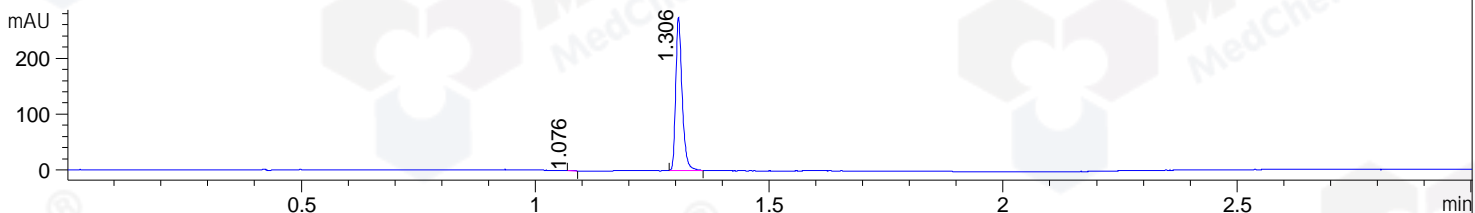
Column :SunFire C18, 4.6*50mm,3.5um A-RP-433

Oven Temperature : 45

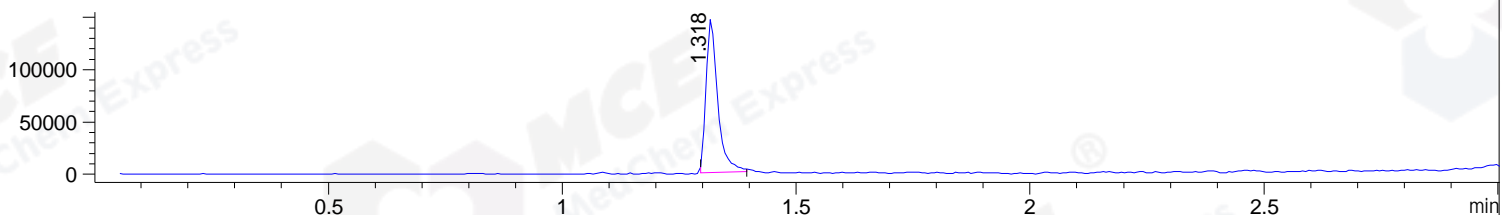
DAD1 B, Sig=214,4 Ref=off



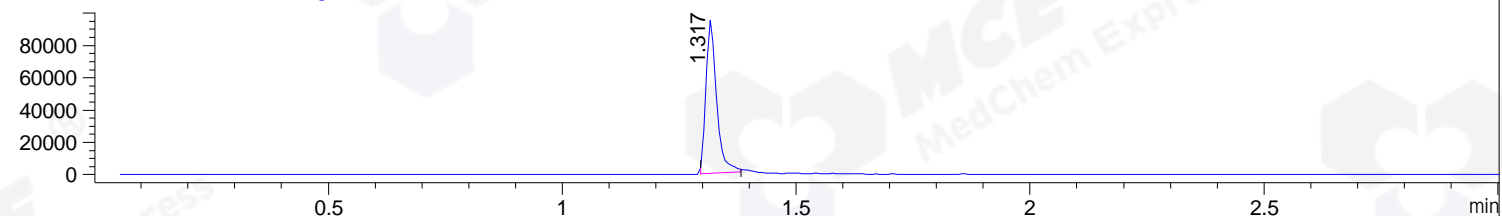
DAD1 C, Sig=254,4 Ref=off



MSD1 TIC, MS File ES-API, Pos, Scan, Frag: 70



Ion 333, MSD1 333, Target Mass 332 +H Positive, EIC=332.7:333.7



Integration Results for DAD1 B, Sig=214,4 Ref=off

RetTim	Width	Area	Height	Area%	MS (+)
0.52	0.02	2.67	2.92	0.41	ND
1.31	0.02	643.36	672.17	99.59	333

Integration Results for DAD1 C, Sig=254,4 Ref=off

RetTim	Width	Area	Height	Area%	MS (+)
1.08	0.01	0.29	0.49	0.11	ND
1.31	0.02	260.61	274.26	99.89	333

Integration Results for MSD1 TIC, MS File

RetTim	Width	Area	Height	Area%	MS (+)
1.32	0.03	259400.17	148445.23	100.00	333

Ret. Time: 1.32

<<<< POSITIVE SPECTRA >>>>

ES-API Positive

