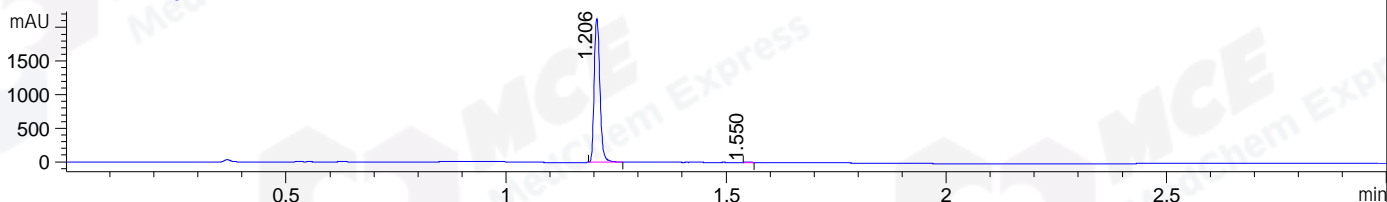
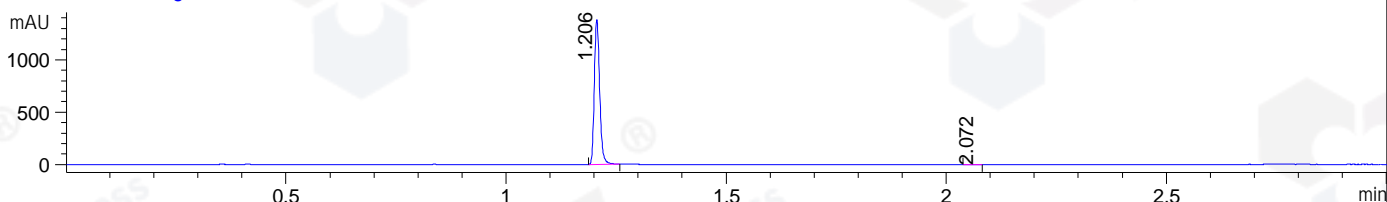


File ..DATA\2020\20201103\1143\CPK2020-030-23720.D Tgt Mass (CHM):
Injection Date : 3 Nov 20 1:49 pm +0800 Seq. Line : 55
Sample Name : CPK2020-030-23720 Location : P1-E-04
Acq. Operator : zyj_1547 Inj : 1
Spec. Reported : MS Integration Inj Volume : 0.5 ul
Acq. Method : D:\Chem32\1\data\2020\20201103\1143\1-POS-3MIN.M
Analysis Method : D:\CHEM32\1\DATA\2020\20201103\1143\1-POS-3MIN.M
CAS NO. : 635702-64-6
Method Info : Mobile Phase: A: water(0.01%TFA) B:ACN(0.01%TFA)
Gradient: 5% to 95%B within 1.3 min
Flow Rate :1.8ml/min
Column :SunFire C18, 4.6*50mm,3.5um A-RP-698

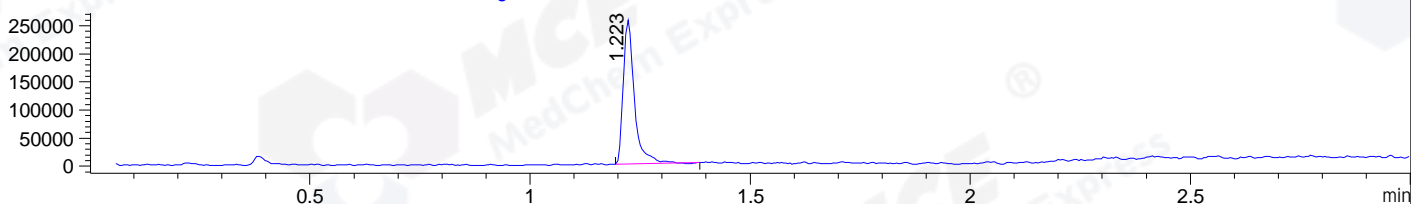
DAD1 B, Sig=214,4 Ref=off



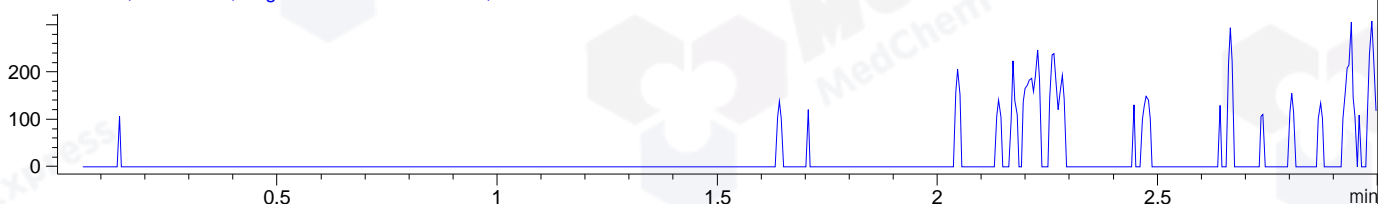
DAD1 C, Sig=254,4 Ref=off



MSD1 TIC, MS File ES-API, Pos, Scan, Frag: 70



Ion 474, MSD1 474, Target Mass 473 +H Positive, EIC=473.7:474.7



Integration Results for DAD1 B, Sig=214,4 Ref=off

RetTim	Width	Area	Height	Area%	MS (+)
1.21	0.02	1933.19	2145.08	99.84	438
1.55	0.01	3.07	4.02	0.16	263

Integration Results for DAD1 C, Sig=254,4 Ref=off

RetTim	Width	Area	Height	Area%	MS (+)
1.21	0.01	1164.91	1390.75	99.95	438
2.07	0.04	0.53	0.25	0.05	ND

Integration Results for MSD1 TIC, MS File

RetTim	Width	Area	Height	Area%	MS (+)
1.22	0.03	450408.28	255942.42	100.00	438

Ret. Time: 1.22

<<<< POSITIVE SPECTRA >>>>

ES-API Positive

