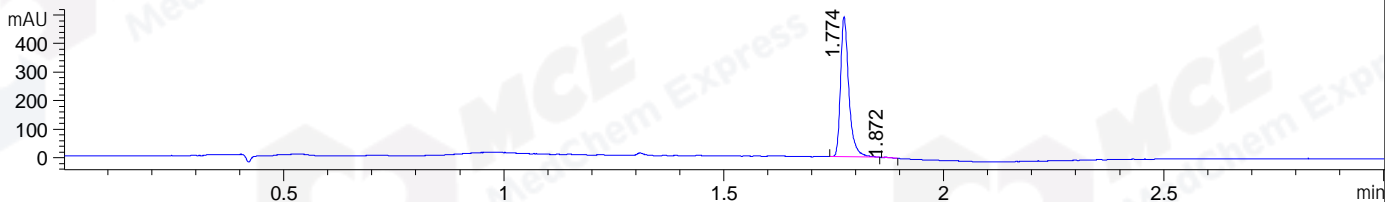
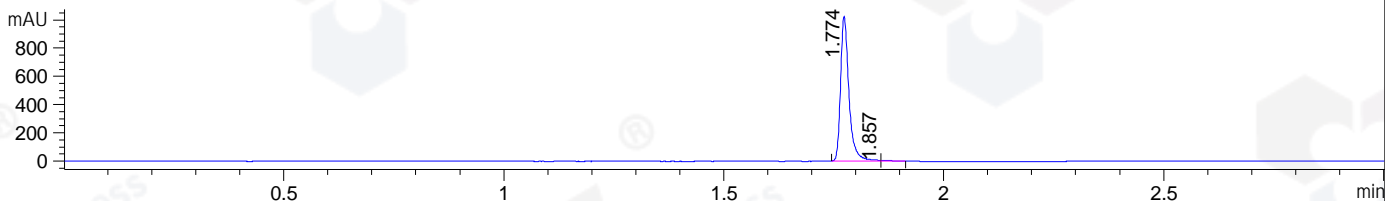


File ..1\DATA\2020\20200324\891\BIZ2020-323-CXL5.D Tgt Mass (CHM):
 Injection Date : 24 Mar 20 8:51 pm +0800 Seq. Line : 33
 Sample Name : BIZ2020-323-CXL5 Location : P1-C-05
 Acq. Operator : ZJ_1432 Inj : 1
 Spec. Reported : MS Integration Inj Volume : 1 ul
 Acq. Method : D:\Chem32\1\data\2020\20200324\891\1-POS-3MIN.M
 Analysis Method : D:\CHEM32\1\DATA\2020\20200324\891\1-POS-3MIN.M
 Catalog No : HY-120110 Batch#61885
 Method Info : Mobile Phase: A: water(0.01%TFA) B:ACN(0.01%TFA)
 Gradient: 5% to 95%B within 1.3 min
 Flow Rate :1.8ml/min
 Column :SunFire C18, 4.6*50mm,3.5um A-RP-433
 Oven Temperature : 45

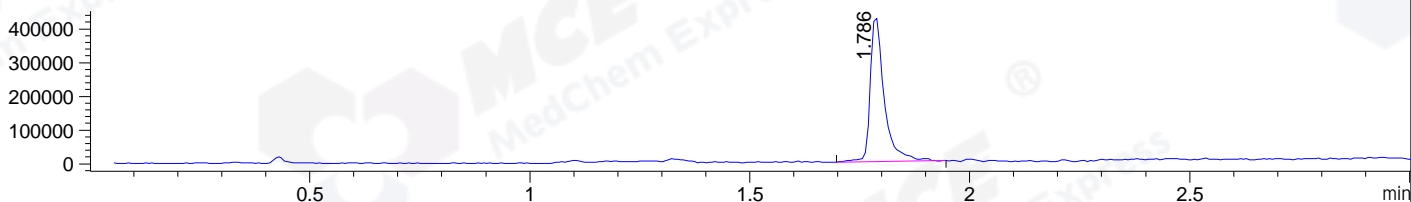
DAD1 B, Sig=214,4 Ref=off



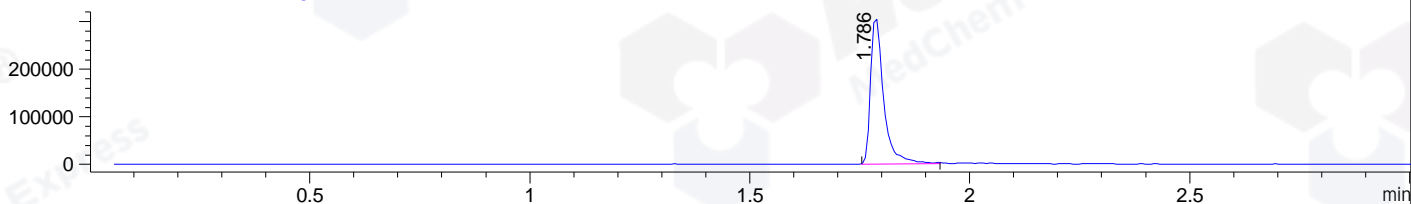
DAD1 C, Sig=254,4 Ref=off



MSD1 TIC, MS File ES-API, Pos, Scan, Frag: 70



Ion 329, MSD1 329, Target Mass 328 +H Positive, EIC=328.7:329.7



Integration Results for DAD1 B, Sig=214,4 Ref=off

RetTim	Width	Area	Height	Area%	MS (+)
1.77	0.02	643.74	491.64	99.78	329
1.87	0.02	1.43	1.31	0.22	329

Integration Results for DAD1 C, Sig=254,4 Ref=off

RetTim	Width	Area	Height	Area%	MS (+)
1.77	0.02	1357.85	1026.25	99.31	329
1.86	0.03	9.46	6.16	0.69	329

Integration Results for MSD1 TIC, MS File

RetTim	Width	Area	Height	Area%	MS (+)
1.79	0.03	954371.69	432828.22	100.00	329

Ret. Time: 1.79

<<<< POSITIVE SPECTRA >>>>

ES-API Positive

