

File ..\DATA\2019\20190326\565\CPK2019-326-04905.D Tgt Mass (CHM):

Injection Date : 26 Mar 19 5:23 pm +0800 Seq. Line : 9

Sample Name : CPK2019-326-04905 Location : P1-A-03

Acq. Operator : LQ_1052 Inj : 1

Spec. Reported : MS Integration Inj Volume : 1 ul

Acq. Method : D:\Chem32\1\data\2019\20190326\565\1-POS-3MIN-1.M

Analysis Method : D:\CHEM32\1\DATA\2019\20190326\565\1-POS-3MIN-1.M

Catalog No : HY-12056 Batch#04905

Method Info : Mobile Phase: A: water(0.01%TFA) B:ACN(0.01%TFA)

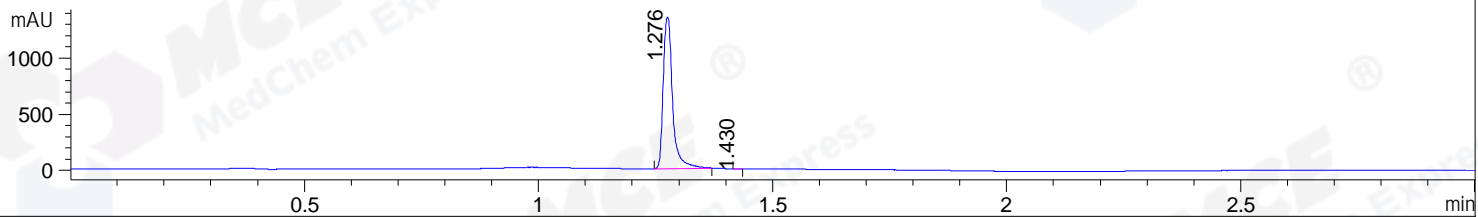
Gradient: 5% to 95%B within 1.3 min

Flow Rate :1.8ml/min

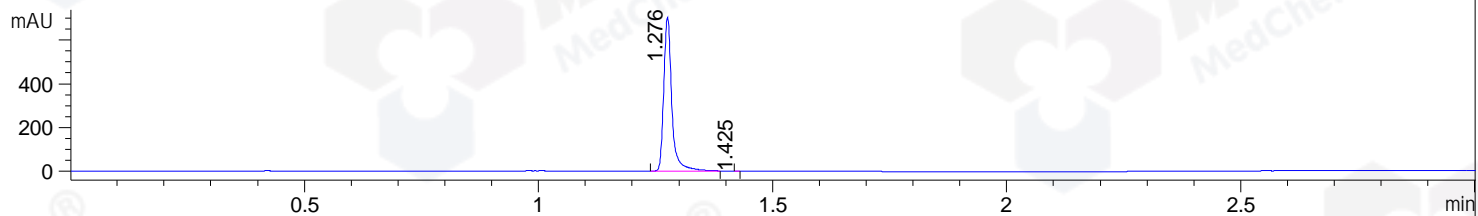
Column :SunFire C18, 4.6*50mm,3.5um A-RP-314

Oven Temperature : 45

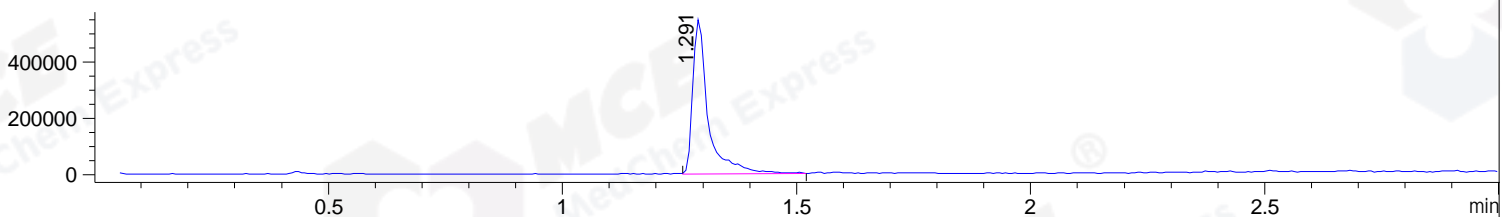
DAD1 B, Sig=214,4 Ref=off



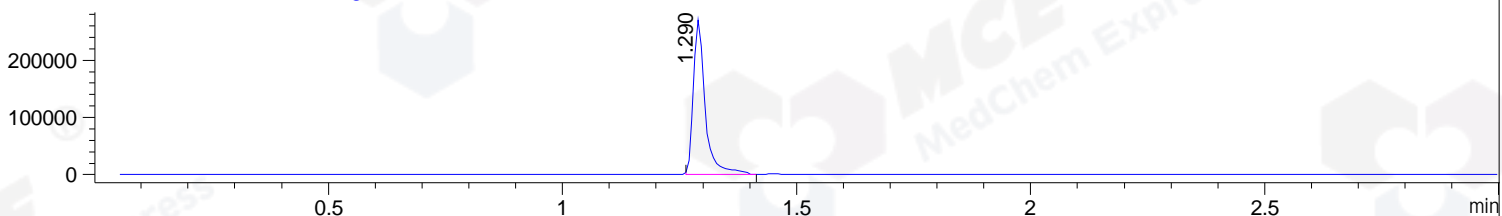
DAD1 C, Sig=254,4 Ref=off



MSD1 TIC, MS File ES-API, Pos, Scan, Frag: 70



Ion 441.5, MSD1 441.5, Target Mass 440.5 +H Positive, EIC=441.2:442.2



Integration Results for DAD1 B, Sig=214,4 Ref=off

RetTim	Width	Area	Height	Area%	MS (+)
1.28	0.02	1891.26	1352.25	99.97	441
1.43	0.02	0.55	0.59	0.03	441

Integration Results for DAD1 C, Sig=254,4 Ref=off

RetTim	Width	Area	Height	Area%	MS (+)
1.28	0.02	844.06	703.44	99.99	441
1.42	0.01	0.04	0.11	0.01	441

Integration Results for MSD1 TIC, MS File

RetTim	Width	Area	Height	Area%	MS (+)
1.29	0.03	1264709.50	549956.56	100.00	441

Ret. Time: 1.29

<<<< POSITIVE SPECTRA >>>>

ES-API Positive

