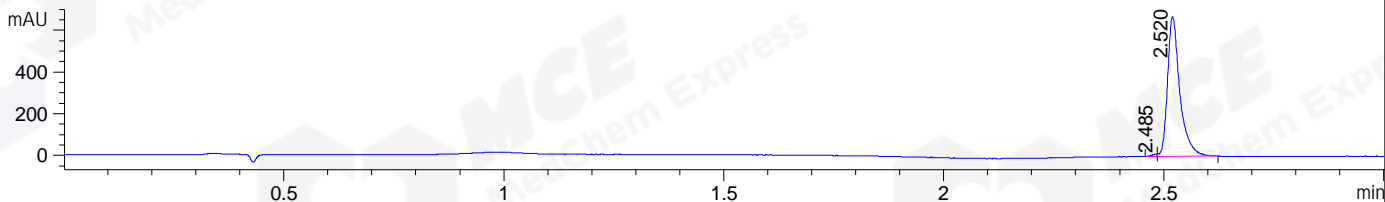
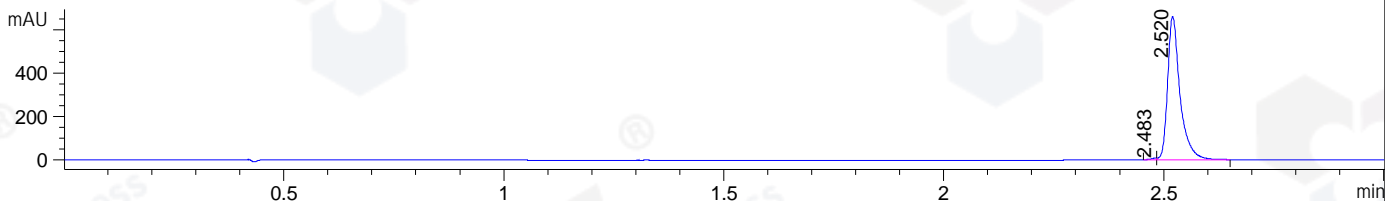


File ..DATA\2019\20191205\784\CPK2019-D05-05946-.D Tgt Mass (CHM):
Injection Date : 5 Dec 19 5:28 pm +0800 Seq. Line : 109
Sample Name : CPK2019-D05-05946 Location : P1-C-03
Acq. Operator : ZJ_1432 Inj : 1
Spec. Reported : MS Integration Inj Volume : 2.5 ul
Acq. Method : D:\Chem32\1\data\2019\20191205\784\1-POS-3MIN.M
Analysis Method : D:\CHEM32\1\DATA\2019\20191205\784\1-POS-3MIN.M
Catalog No : HY-12063 Batch# 05946
Method Info : Mobile Phase: A: water(0.01%TFA) B:ACN(0.01%TFA)
Gradient: 5% to 95%B within 1.3 min
Flow Rate :1.8ml/min
Column :SunFire C18, 4.6*50mm,3.5um A-RP-433
Oven Temperature : 45

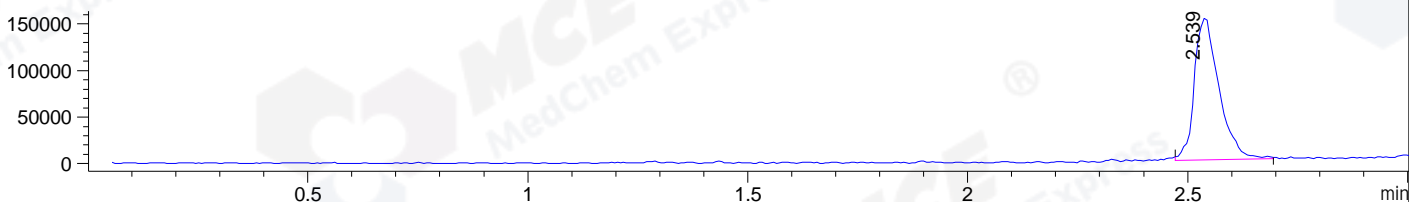
DAD1 B, Sig=214,4 Ref=off



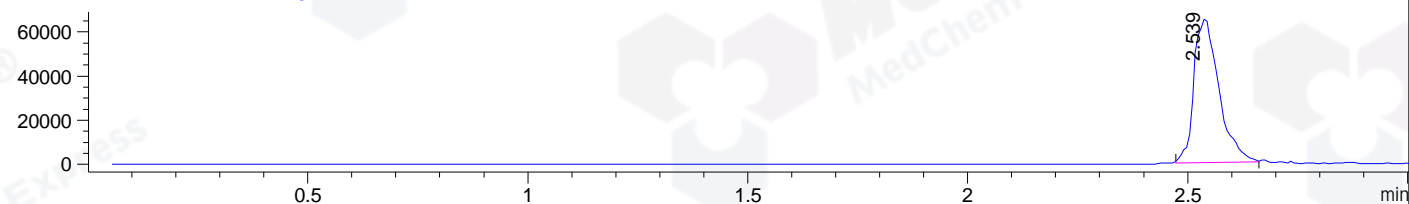
DAD1 C, Sig=254,4 Ref=off



MSD1 TIC, MS File ES-API, Pos, Scan, Frag: 70



Ion 410, MSD1 410, Target Mass 409 +H Positive, EIC=409.7:410.7



Integration Results for DAD1 B, Sig=214,4 Ref=off

RetTim	Width	Area	Height	Area%	MS (+)
2.48	0.01	8.64	10.64	0.66	410
2.52	0.03	1301.50	669.92	99.34	410

Integration Results for DAD1 C, Sig=254,4 Ref=off

RetTim	Width	Area	Height	Area%	MS (+)
2.48	0.01	5.72	7.29	0.44	410
2.52	0.03	1293.23	662.12	99.56	410

Integration Results for MSD1 TIC, MS File

RetTim	Width	Area	Height	Area%	MS (+)
2.54	0.06	593263.31	152510.28	100.00	410

Ret. Time: 2.54

<<<< POSITIVE SPECTRA >>>>

ES-API Positive

