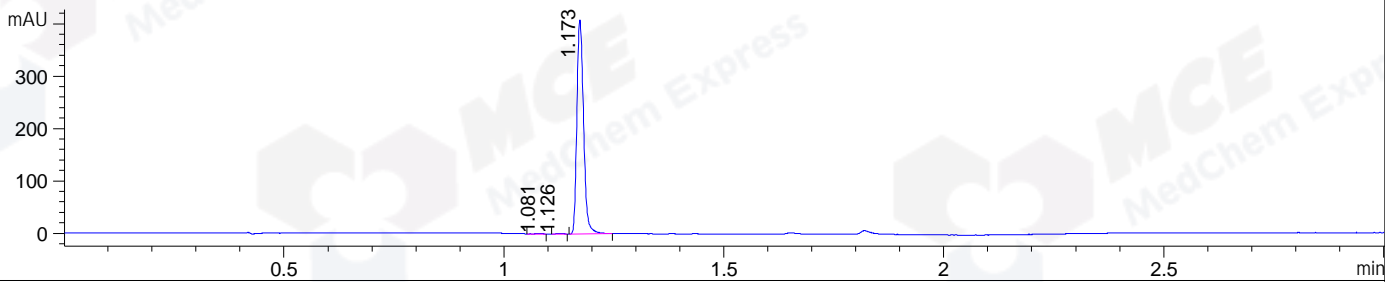
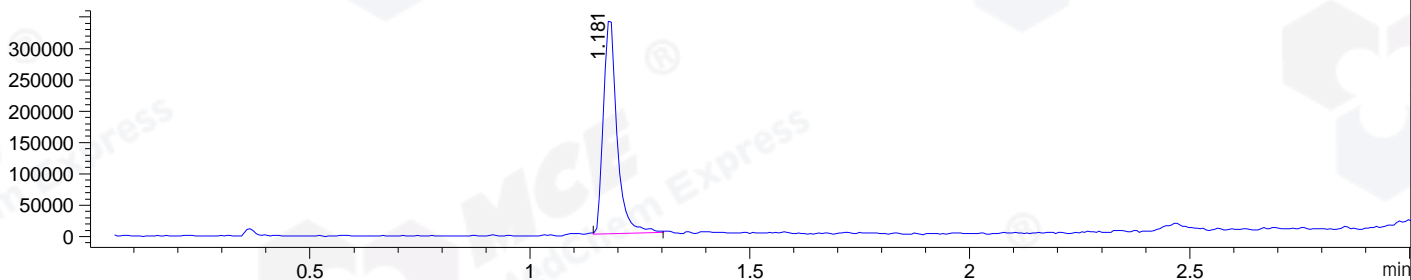


File ..1\DATA\2019\20191028\742\BIZ2019-O25-CXL8.D Tgt Mass (CHM):
Injection Date : 28 Oct 19 2:24 pm +0800 Seq. Line : 53
Sample Name : BIZ2019-O25-CXL8 Location : P1-B-09
Acq. Operator : ZJ_1432 Inj : 1
Spec. Reported : MS Integration Inj Volume : 1 ul
Acq. Method : D:\Chem32\1\data\2019\20191028\742\1-POS-3MIN.M
Analysis Method : D:\CHEM32\1\DATA\2019\20191028\742\1-POS-3MIN.M
Catalog No : HY-120691A Batch#50089
Method Info : Mobile Phase: A: water(0.01%TFA) B:ACN(0.01%TFA)
Gradient: 5% to 95%B within 1.3 min
Flow Rate :1.8ml/min
Column :SunFire C18, 4.6*50mm,3.5um A-RP-433
Oven Temperature : 45□

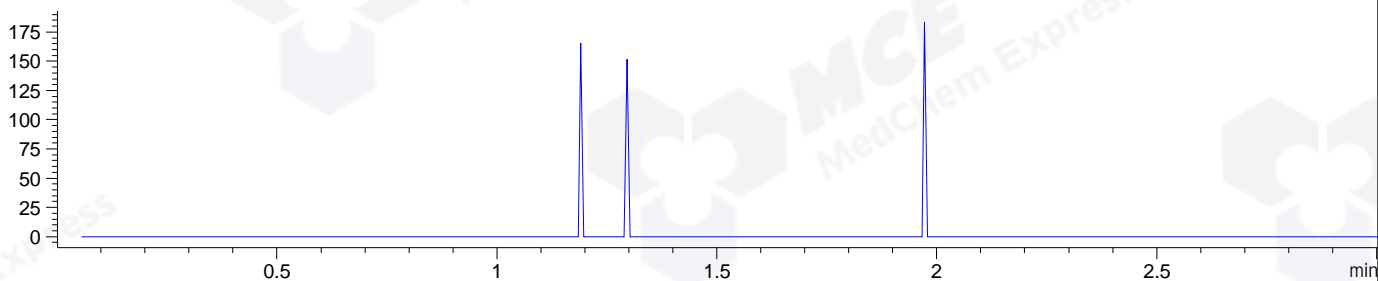
DAD1 C, Sig=254,4 Ref=off



MSD1 TIC, MS File ES-API, Pos, Scan, Frag: 70



Ion 481.1, MSD1 481.1, Target Mass 480.1 +H Positive, EIC=480.8:481.8



Integration Results for DAD1 C, Sig=254,4 Ref=off

RetTim	Width	Area	Height	Area%	MS (+)
1.08	0.02	1.07	0.84	0.25	ND
1.13	0.02	1.30	1.21	0.30	ND
1.17	0.02	429.98	408.80	99.45	201

Integration Results for MSD1 TIC, MS File

RetTim	Width	Area	Height	Area%	MS (+)
1.18	0.03	740075.88	347522.09	100.00	201

Ret. Time: 1.18

<<<< POSITIVE SPECTRA >>>>

