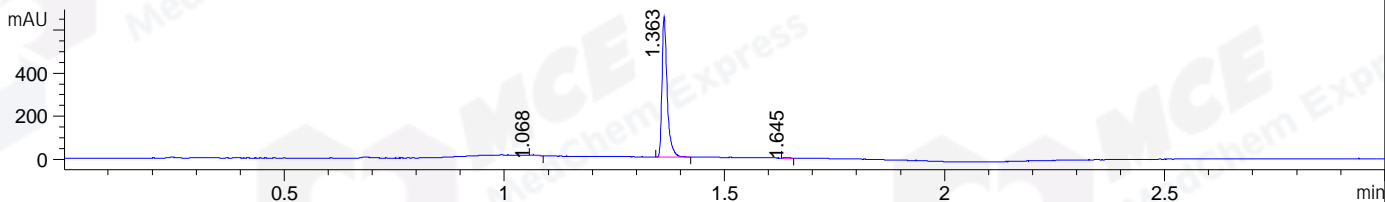
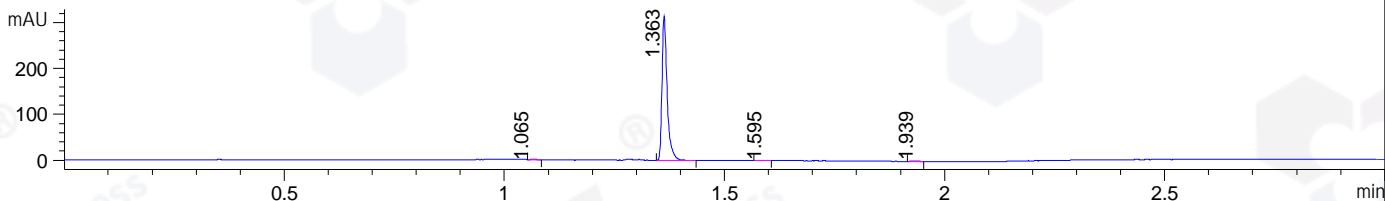


File ..TA\2020\20200709\1028 1\BIZ2020-708-WMX11.D Tgt Mass (CHM):
Injection Date : 10 Jul 20 2:38 am +0800 Seq. Line : 41
Sample Name : BIZ2020-708-WMX11 Location : P1-D-09
Acq. Operator : ZJ_1432 Inj : 1
Spec. Reported : MS Integration Inj Volume : 0.5 ul
Acq. Method : D:\Chem32\1\data\2020\20200709\1028 1\1-POS-3MIN.M
Analysis Method : D:\CHEM32\1\DATA\2020\20200709\1028 1\1-POS-3MIN.M
Catalog No : HY-120738
Method Info : Mobile Phase: A: water(0.01%TFA) B:ACN(0.01%TFA)
Gradient: 5% to 95%B within 1.3 min
Flow Rate :1.8ml/min
Column :SunFire C18, 4.6*50mm,3.5um A-RP-607
Oven Temperature : 45

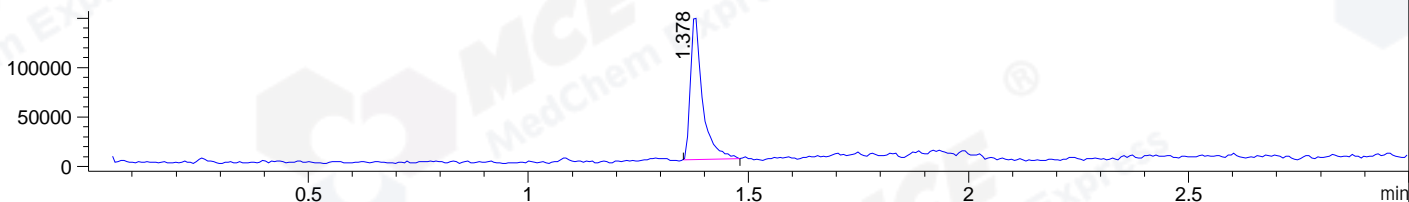
DAD1 B, Sig=214,4 Ref=off



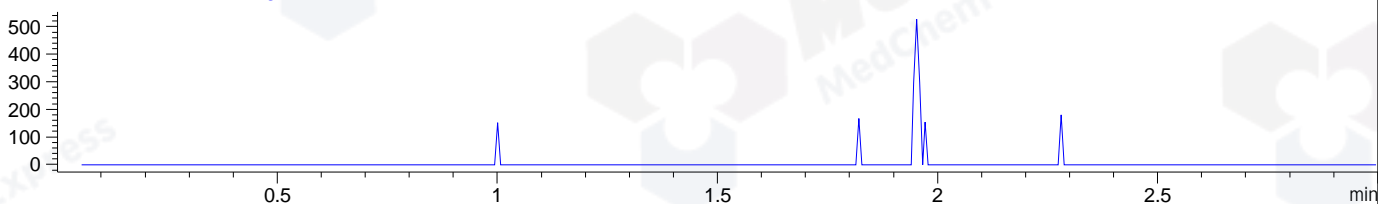
DAD1 C, Sig=254,4 Ref=off



MSD1 TIC, MS File ES-API, Pos, Scan, Frag: 70



Ion 579, MSD1 579, Target Mass 578 +H Positive, EIC=578.7:579.7



Integration Results for DAD1 B, Sig=214,4 Ref=off

RetTim	Width	Area	Height	Area%	MS (+)
1.07	0.02	2.56	2.83	0.48	313
1.36	0.01	532.23	652.38	99.19	543
1.64	0.01	1.81	2.56	0.34	261

Integration Results for DAD1 C, Sig=254,4 Ref=off

RetTim	Width	Area	Height	Area%	MS (+)
1.07	0.01	0.92	1.03	0.35	261
1.36	0.01	256.20	315.42	98.87	543
1.59	0.02	1.11	0.74	0.43	261
1.94	0.02	0.90	0.61	0.35	261

Integration Results for MSD1 TIC, MS File

RetTim	Width	Area	Height	Area%	MS (+)
1.38	0.03	278277.25	147919.31	100.00	543

Ret. Time: 1.38

<<<< POSITIVE SPECTRA >>>>

ES-API Positive

