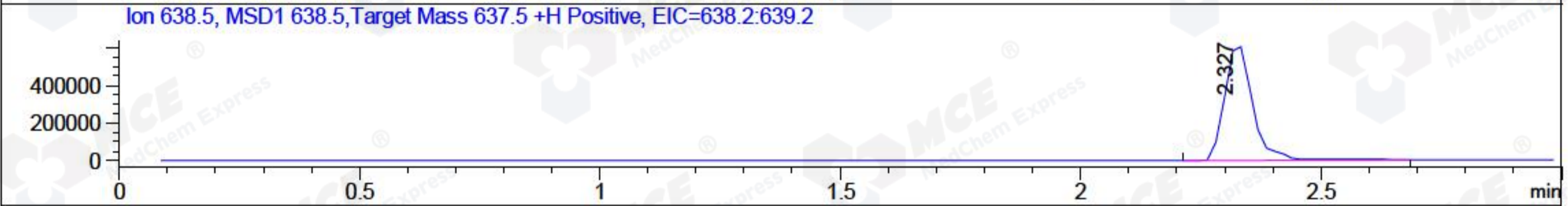
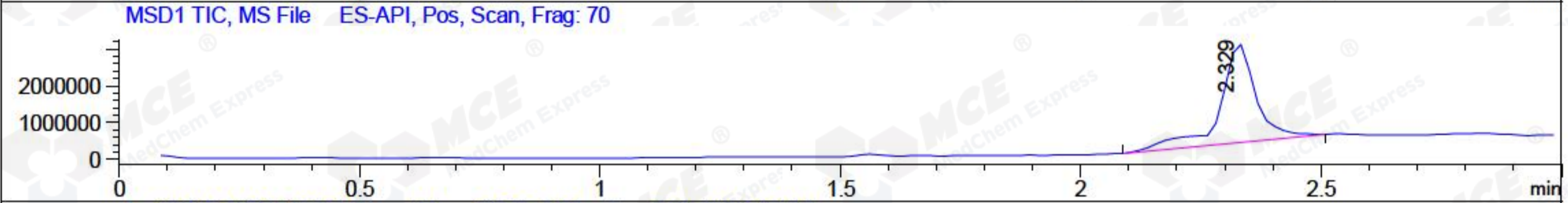
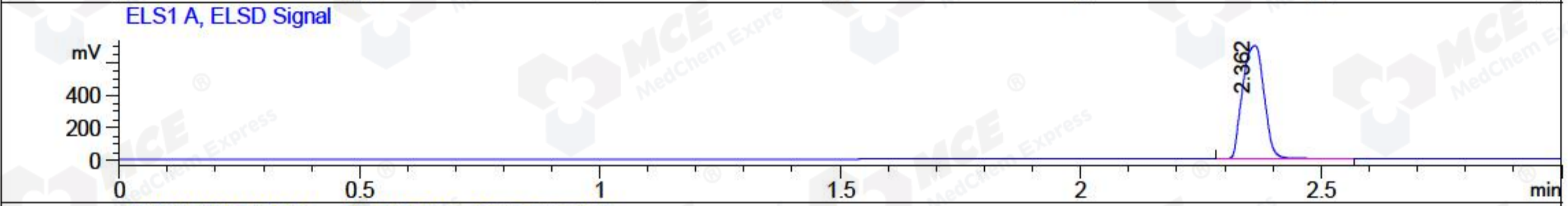
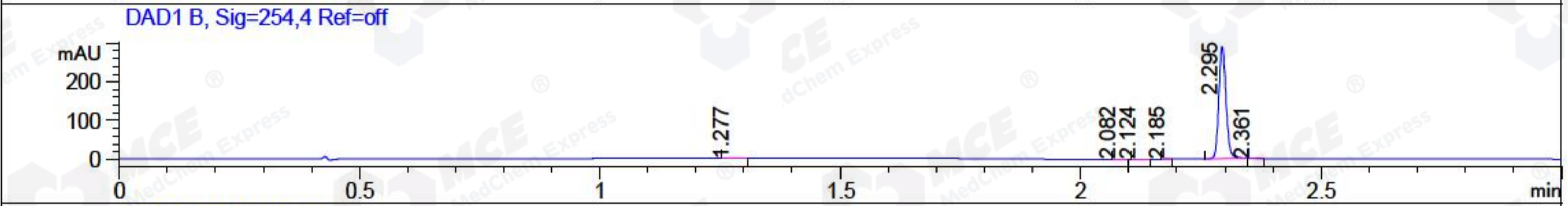
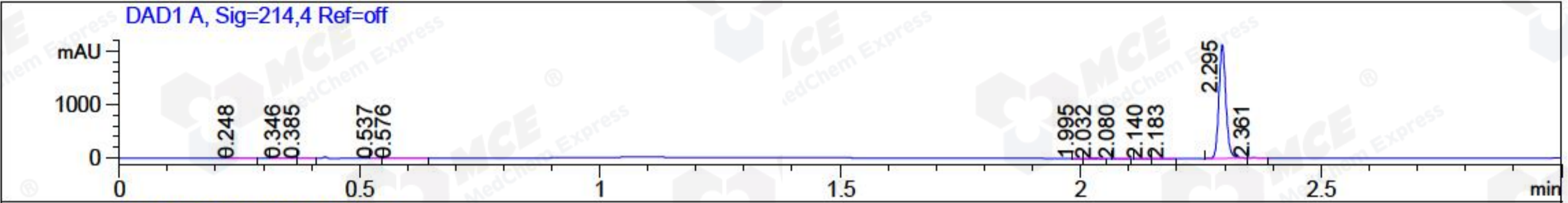


File ..018\20180302\20180302 1\CPK2018-227-07936.D Tgt Mass (CHM):
 Injection Date : 2 Mar 18 11:53 am +0800 Seq. Line : 18
 Sample Name : CPK2018-227-07936 Location : P1-C-07
 Acq. Operator : SYSTEM Inj : 1
 Spec. Reported : MS Integration Inj Volume : 1 ul
 Acq. Method : D:\LCMS03\Data\2018\20180302\20180302 1\1-POS-3MIN.M
 Analysis Method : D:\LCMS03\Data\2018\20180302\20180302 1\1-POS-3MIN.M
 Catalog No : HY-12090 Batch#07936
 Method Info : Mobile Phase: A: water(0.01%TFA) B:ACN(0.01%TFA)
 Gradient: 5% to 95%B within 1.3 min
 Flow Rate : 1.8ml/min
 Column :SunFire C18, 4.6*50mm,3.5um A-RP-186
 Oven Temperature : 45C



Integration Results for DAD1 A, Sig=214,4 Ref=off

RetTim	Width	Area	Height	Area%	MS (+)
0.25	0.02	1.03	0.99	0.05	303
0.35	0.03	2.15	1.30	0.10	303
0.39	0.01	3.40	3.85	0.16	303
0.54	0.01	0.85	1.08	0.04	303
0.58	0.04	2.67	0.87	0.12	303
2.00	0.01	0.50	0.79	0.02	105
2.03	0.02	5.43	3.71	0.25	105
2.08	0.01	1.68	1.77	0.08	105
2.14	0.02	0.49	0.28	0.02	105
2.18	0.02	1.33	1.32	0.06	105
2.29	0.02	2147.08	2118.80	98.39	660
2.36	0.02	15.51	12.29	0.71	660

Integration Results for DAD1 B, Sig=254,4 Ref=off

RetTim	Width	Area	Height	Area%	MS (+)
1.28	0.02	0.97	1.00	0.33	303
2.08	0.02	0.15	0.14	0.05	105

2.12	0.02	0.32	0.25	0.11	105
2.18	0.02	0.17	0.18	0.06	105
2.29	0.02	294.35	289.53	99.15	660
2.36	0.01	0.92	0.99	0.31	660

Integration Results for ELS1 A, ELSD Signal

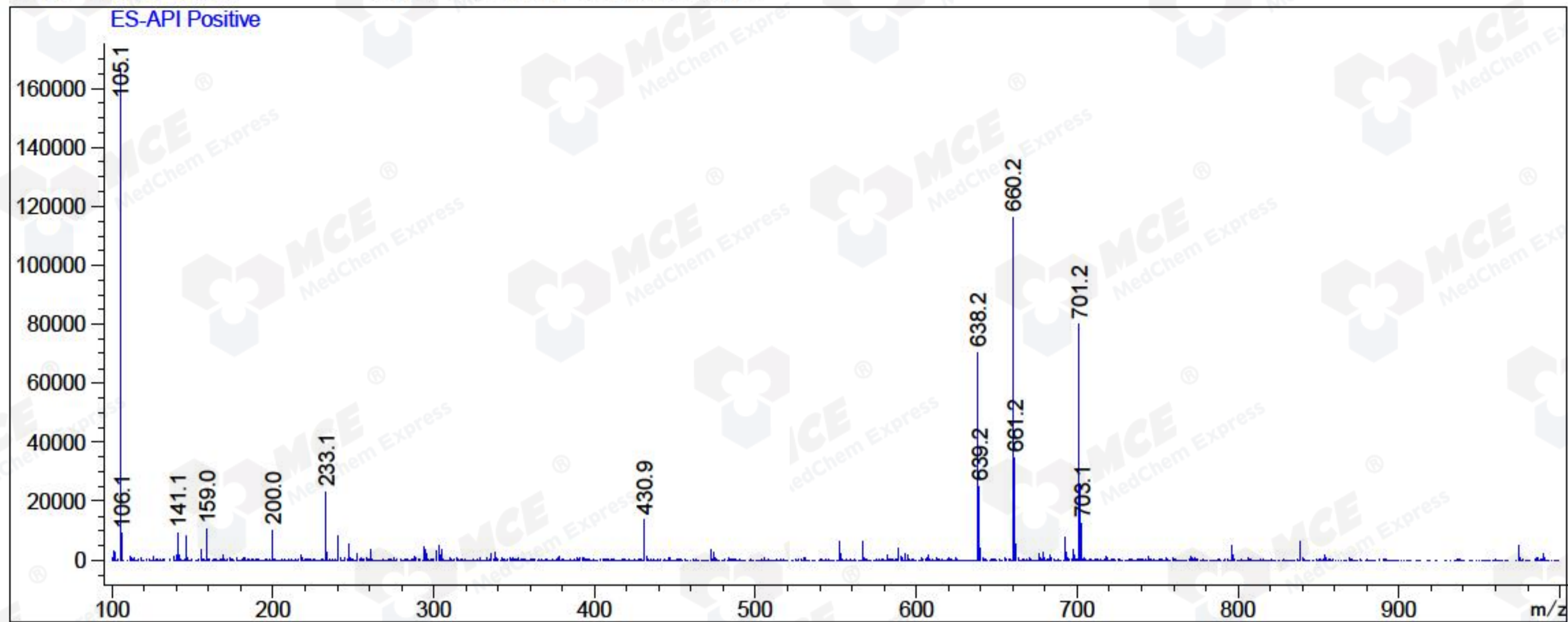
RetTim	Width	Area	Height	Area%	MS (+)
2.36	0.05	2137.13	689.75	100.00	105

Integration Results for MSD1 TIC, MS File

RetTim	Width	Area	Height	Area%	MS (+)
2.33	0.08	14026355.00	2690421.25	100.00	105

Ret. Time: 2.33

<<<< POSITIVE SPECTRA >>>>



*** End of Report ***