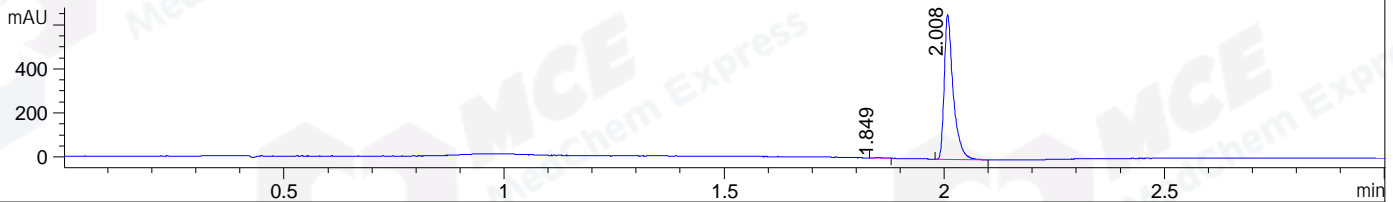
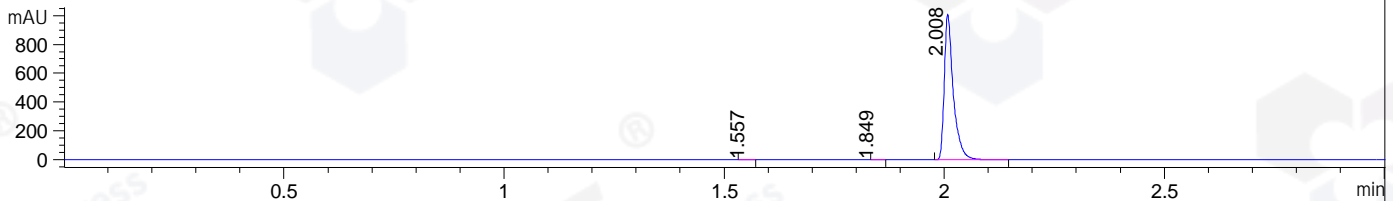


File ..\DATA\2019\20191228\796\BIZ2019-D26-CXL1.D Tgt Mass (CHM):
 Injection Date : 28 Dec 19 10:26 am +0800 Seq. Line : 20
 Sample Name : BIZ2019-D26-CXL1 Location : P1-A-08
 Acq. Operator : ZJ_1432 Inj : 1
 Spec. Reported : MS Integration Inj Volume : 0.5 ul
 Acq. Method : D:\Chem32\1\data\2019\20191228\796\1-POS-3MIN.M
 Analysis Method : D:\CHEM32\1\DATA\2019\20191228\796\1-POS-3MIN.M
 Catalog No : HY-121750 Batch#58623
 Method Info : Mobile Phase: A: water(0.01%TFA) B:ACN(0.01%TFA)
 Gradient: 5% to 95%B within 1.3 min
 Flow Rate :1.8ml/min
 Column :SunFire C18, 4.6*50mm,3.5um A-RP-433
 Oven Temperature : 45

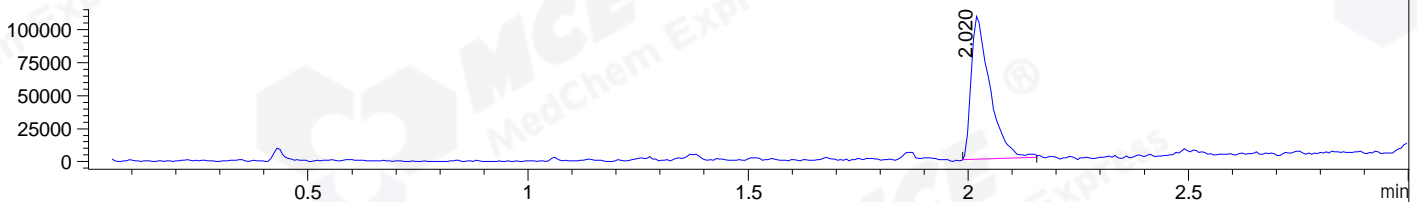
DAD1 B, Sig=214,4 Ref=off



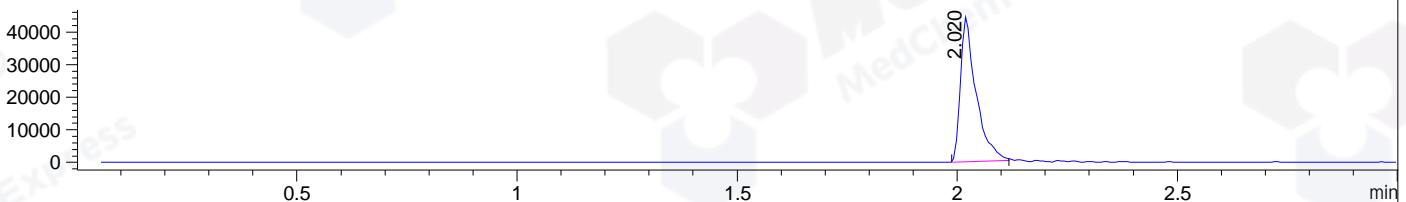
DAD1 C, Sig=254,4 Ref=off



MSD1 TIC, MS File ES-API, Pos, Scan, Frag: 70



Ion 445, MSD1 445, Target Mass 444 +H Positive, EIC=444.7:445.7



Integration Results for DAD1 B, Sig=214,4 Ref=off

RetTim	Width	Area	Height	Area%	MS (+)
1.85	0.02	4.15	3.24	0.44	292
2.01	0.02	930.82	657.77	99.56	445

Integration Results for DAD1 C, Sig=254,4 Ref=off

RetTim	Width	Area	Height	Area%	MS (+)
1.56	0.02	1.09	0.89	0.08	ND
1.85	0.02	1.78	1.58	0.12	292
2.01	0.02	1447.19	1013.42	99.80	445

Integration Results for MSD1 TIC, MS File

RetTim	Width	Area	Height	Area%	MS (+)
2.02	0.04	323158.81	109218.76	100.00	445

Ret. Time: 2.02

<<<< POSITIVE SPECTRA >>>>

ES-API Positive

