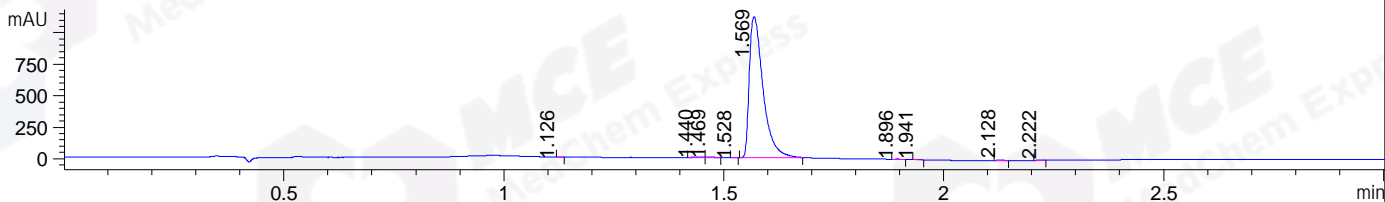


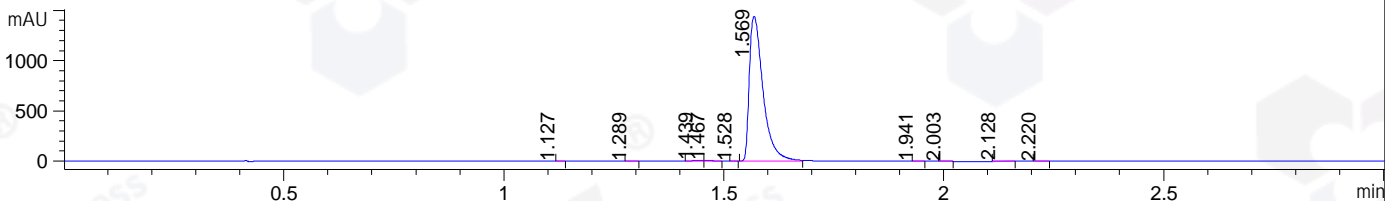
File ..DATA\2019\20190312\563\BIZ2019-311-CXL5.D Tgt Mass (CHM) :

Injection Date : 12 Mar 19 3:53 pm +0800 Seq. Line : 25
 Sample Name : BIZ2019-311-CXL5 Location : P1-F-04
 Acq. Operator : LQ_1052 Inj : 1
 Spec. Reported : MS Integration Inj Volume : 3 ul
 Acq. Method : D:\Chem32\1\data\2019\20190312\563\1-POS-3MIN-1.M
 Analysis Method : D:\CHEM32\1\DATA\2019\20190312\563\1-POS-3MIN-1.M
 Catalog No : HY-12241 Batch#38935
 Method Info : Mobile Phase: A: water(0.01%TFA) B:ACN(0.01%TFA)
 Gradient: 5% to 95%B within 1.3 min
 Flow Rate :1.8ml/min
 Column :SunFire C18, 4.6*50mm,3.5um A-RP-314
 Oven Temperature : 45

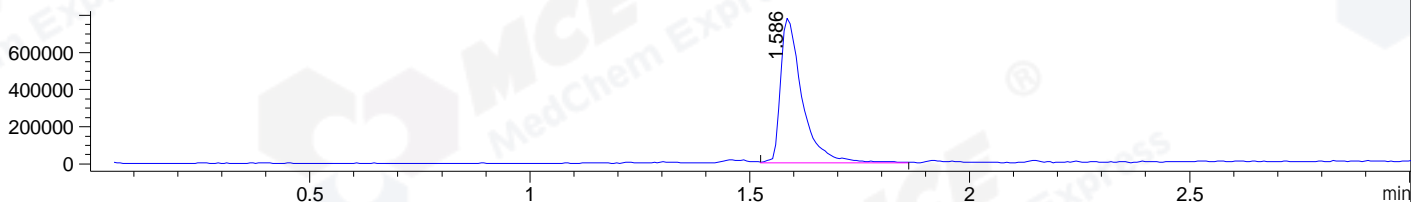
DAD1 B, Sig=214,4 Ref=off



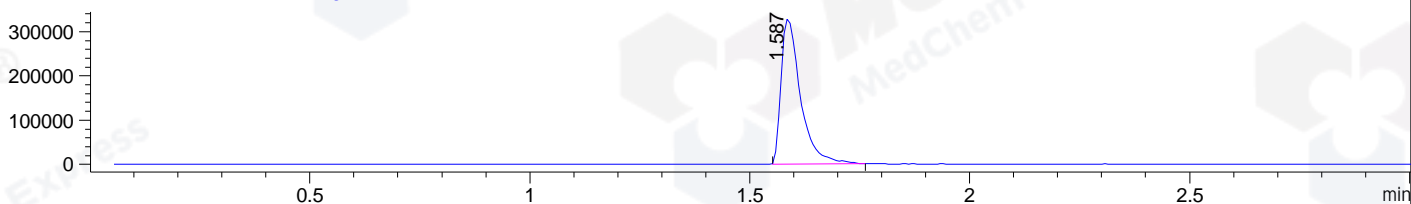
DAD1 C, Sig=254,4 Ref=off



MSD1 TIC, MS File ES-API, Pos, Scan, Frag: 70



Ion 561.2, MSD1 561.2, Target Mass 560.2 +H Positive, EIC=560.9:561.9



Integration Results for DAD1 B, Sig=214,4 Ref=off

RetTim	Width	Area	Height	Area%	MS (+)
1.13	0.01	0.47	0.70	0.02	ND
1.44	0.02	7.23	4.90	0.29	477
1.47	0.02	4.44	3.07	0.18	477
1.53	0.01	0.78	0.99	0.03	ND
1.57	0.03	2436.95	1119.87	99.08	561
1.90	0.02	1.47	1.58	0.06	415
1.94	0.02	1.21	1.30	0.05	281
2.13	0.02	5.49	4.99	0.22	695
2.22	0.02	1.55	1.33	0.06	142

Integration Results for DAD1 C, Sig=254,4 Ref=off

RetTim	Width	Area	Height	Area%	MS (+)
1.13	0.01	0.58	0.72	0.02	ND
1.29	0.02	1.62	1.39	0.05	324
1.44	0.02	9.17	6.25	0.29	477
1.47	0.03	6.35	3.97	0.20	477
1.53	0.01	1.33	1.62	0.04	ND

1.57	0.03	3109.13	1439.08	99.05	561
1.94	0.02	2.12	1.89	0.07	600
2.00	0.02	0.60	0.65	0.02	ND
2.13	0.02	6.31	5.03	0.20	695
2.22	0.02	1.87	1.47	0.06	574

Integration Results for MSD1 TIC, MS File

RetTim	Width	Area	Height	Area%	MS (+)
1.59	0.05	2672289.25	780742.88	100.00	561

Ret. Time: 1.59

<<<< POSITIVE SPECTRA >>>>

ES-API Positive

