

File ..2018\20180314\20180314-1\BIZ2018-314-WYQ7.D Tgt Mass (CHM):

Injection Date : 14 Mar 18 5:39 pm +0800 Seq. Line : 71

Sample Name : BIZ2018-314-WYQ7 Location : P2-C-03

Acq. Operator : SYSTEM Inj : 1

Spec. Reported : MS Integration Inj Volume : 1 ul

Acq. Method : D:\LCMS03\Data\2018\20180314\20180314-1\1-POS-3MIN.M

Analysis Method : D:\LCMS03\Data\2018\20180314\20180314-1\1-POS-3MIN.M

Catalog No : HY-12420 Batch#29114

Method Info : Mobile Phase: A: water(0.01%TFA) B:ACN(0.01%TFA)

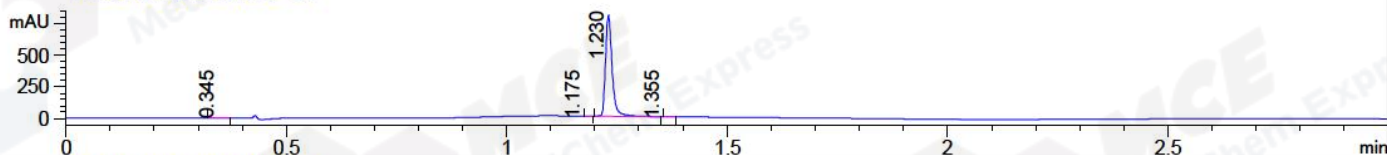
Gradient: 5% to 95%B within 1.3 min

Flow Rate :1.8ml/min

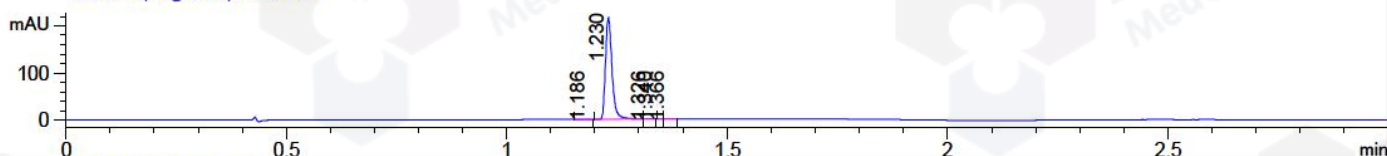
Column :SunFire C18, 4.6\*50mm,3.5um A-RP-186

Oven Temperature : 45C

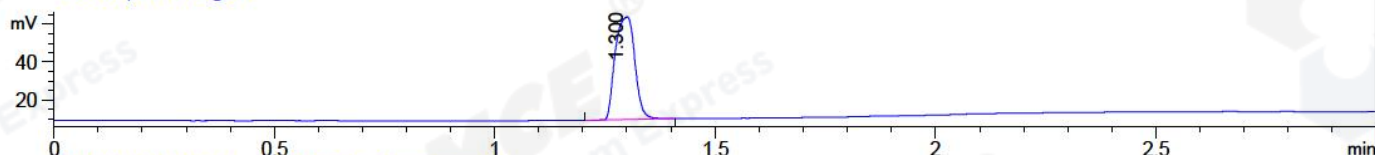
DAD1 A, Sig=214,4 Ref=off



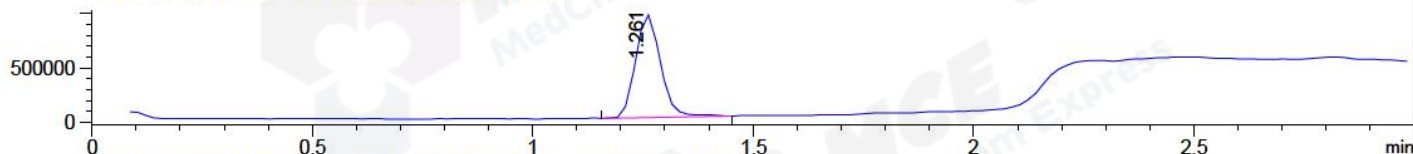
DAD1 B, Sig=254,4 Ref=off



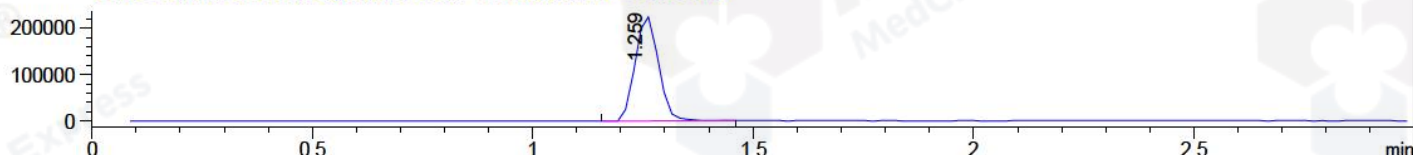
ELS1 A, ELSD Signal



MSD1 TIC, MS File ES-API, Pos, Scan, Frag: 70



Ion 363.1, MSD1 363.1, Target Mass 362.1 +H Positive, EIC=362.8:363.8



## Integration Results for DAD1 A, Sig=214,4 Ref=off

RetTim	Width	Area	Height	Area%	MS (+)
0.34	0.03	3.56	2.09	0.43	ND
1.18	0.01	0.33	-0.06	0.04	ND
1.23	0.02	827.42	788.78	99.40	182
1.36	0.01	1.12	0.04	0.13	397

## Integration Results for DAD1 B, Sig=254,4 Ref=off

RetTim	Width	Area	Height	Area%	MS (+)
1.19	0.02	0.23	0.20	0.10	ND
1.23	0.02	223.93	214.29	99.64	182
1.33	0.02	0.14	0.15	0.06	725
1.34	0.01	0.04	-0.00	0.02	182
1.37	0.01	0.40	0.47	0.18	397

## Integration Results for ELS1 A, ELSD Signal

RetTim	Width	Area	Height	Area%	MS (+)
--------	-------	------	--------	-------	--------

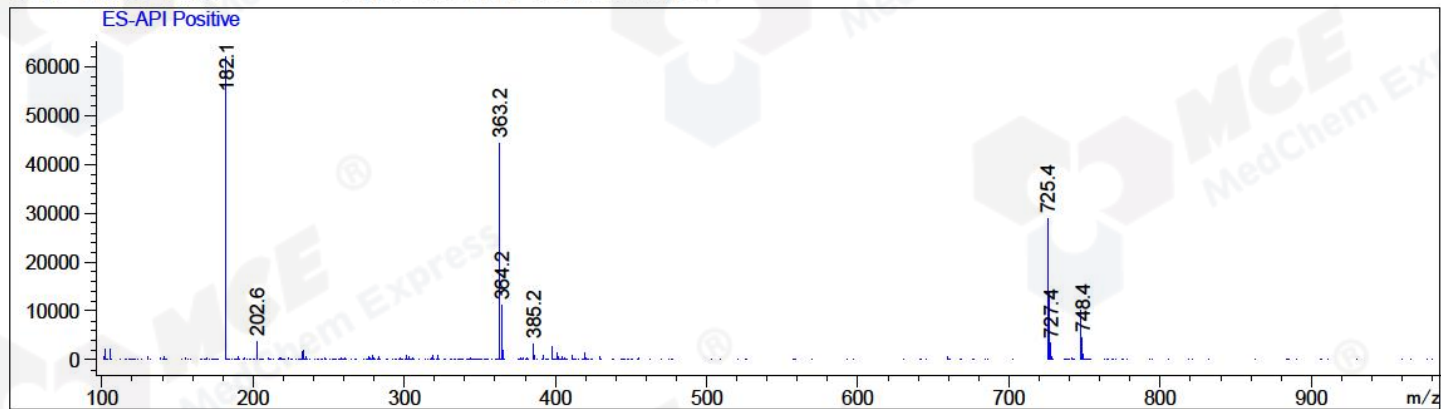
1.30      0.05            166.98            54.03      100.00      182

## Integration Results for MSD1 TIC, MS File

RetTime	Width	Area	Height	Area%	MS(+)
1.26	0.06	3760423.00	948996.50	100.00	182

Ret. Time: 1.26

<<<< POSITIVE SPECTRA >>>>



\*\*\* End of Report \*\*\*