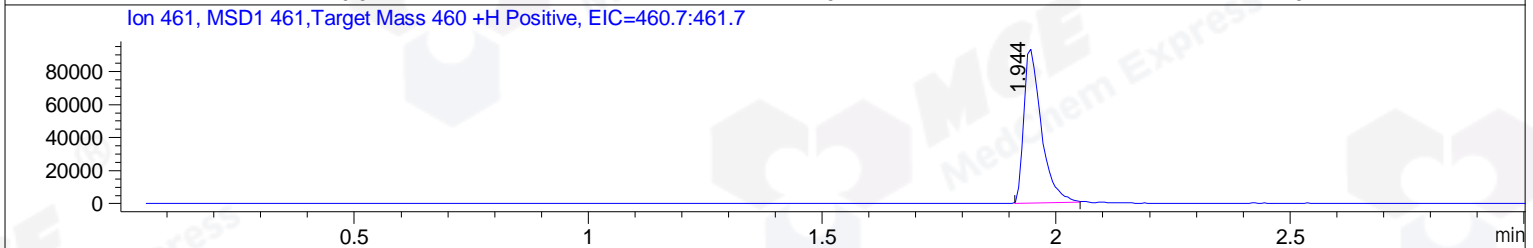
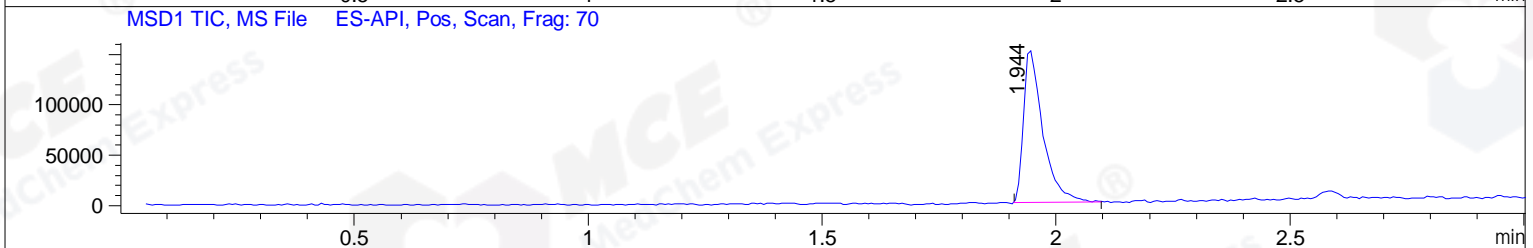
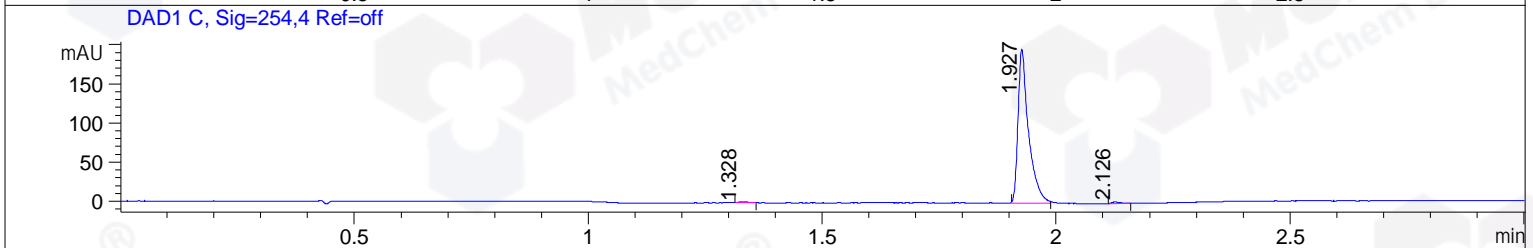
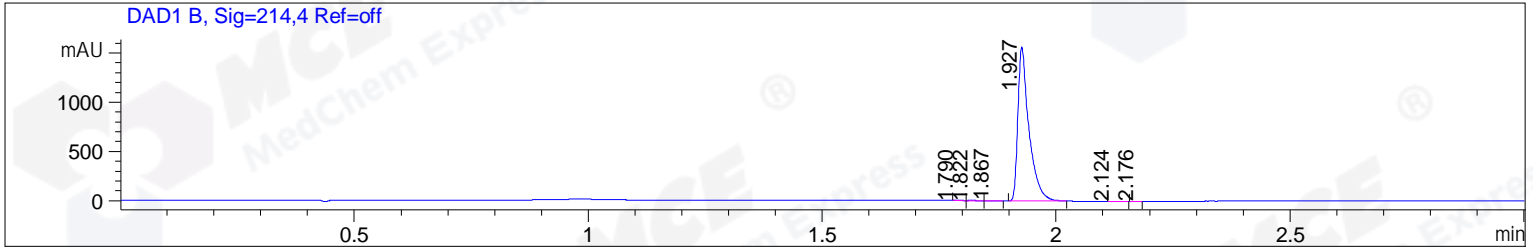


File ..1\DATA\2019\20191211\790\BIZ2019-D11-CXL1.D Tgt Mass (CHM):  
 Injection Date : 11 Dec 19 5:36 pm +0800 Seq. Line : 115  
 Sample Name : BIZ2019-D11-CXL1 Location : PL-B-04  
 Acq. Operator : ZJ\_1432 Inj : 1  
 Spec. Reported : MS Integration Inj Volume : 1 ul  
 Acq. Method : D:\Chem32\1\data\2019\20191211\790\1-POS-3MIN.M  
 Analysis Method : D:\CHEM32\1\DATA\2019\20191211\790\1-POS-3MIN.M  
 Catalog No : HY-124632 Batch#57581  
 Method Info : Mobile Phase: A: water(0.01%TFA) B:ACN(0.01%TFA)  
 Gradient: 5% to 95%B within 1.3 min  
 Flow Rate :1.8ml/min  
 Column :SunFire C18, 4.6\*50mm,3.5um A-RP-433  
 Oven Temperature : 45



Integration Results for DAD1 B, Sig=214,4 Ref=off

RetTim	Width	Area	Height	Area%	MS (+)
1.79	0.01	1.97	2.31	0.08	ND
1.82	0.02	2.75	2.19	0.11	ND
1.87	0.02	3.61	2.75	0.14	ND
1.93	0.03	2572.20	1563.51	99.53	461
2.12	0.02	2.25	1.77	0.09	116
2.18	0.02	1.46	1.60	0.06	116

Integration Results for DAD1 C, Sig=254,4 Ref=off

RetTim	Width	Area	Height	Area%	MS (+)
1.33	0.03	1.25	0.83	0.40	ND
1.93	0.02	307.21	196.60	98.74	461
2.13	0.02	2.66	2.01	0.85	116

Integration Results for MSD1 TIC, MS File

RetTim	Width	Area	Height	Area%	MS (+)
--------	-------	------	--------	-------	--------

1.94

0.04

436260.22

152170.84

100.00

461

Ret. Time: 1.94

<<<< POSITIVE SPECTRA >>>>

ES-API Positive

