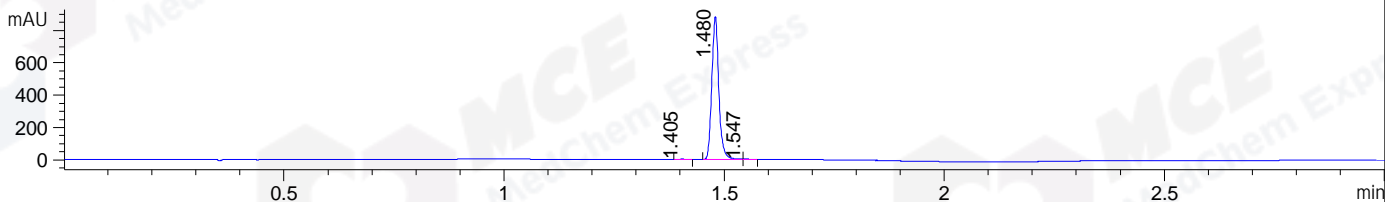
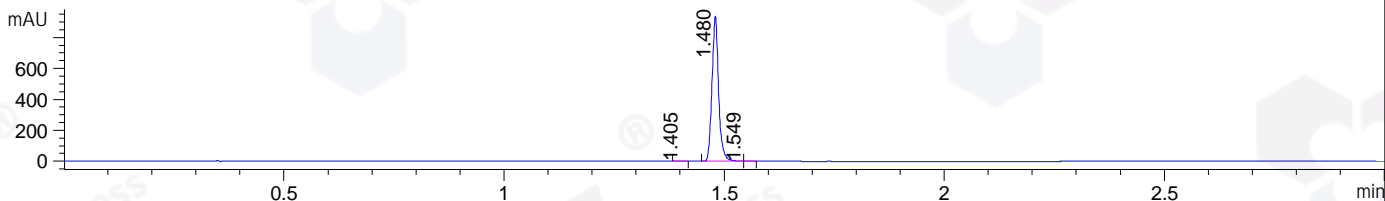


File ..\DATA\2019\20190715\629\CPK2019-715-15765.D Tgt Mass (CHM):
 Injection Date : 15 Jul 19 5:32 pm +0800 Seq. Line : 25
 Sample Name : CPK2019-715-15765 Location : P1-B-01
 Acq. Operator : ZJ_1432 Inj : 1
 Spec. Reported : MS Integration Inj Volume : 1 ul
 Acq. Method : D:\Chem32\1\data\2019\20190715\629\1-POS-3MIN.M
 Analysis Method : D:\CHEM32\1\DATA\2019\20190715\629\1-POS-3MIN.M
 Catalog No : HY-12527 Batch#15765
 Method Info : Mobile Phase: A: water(0.01%TFA) B:ACN(0.01%TFA)
 Gradient: 5% to 95%B within 1.3 min
 Flow Rate :1.8ml/min
 Column :SunFire C18, 4.6*50mm,3.5um A-RP-433
 Oven Temperature : 45□

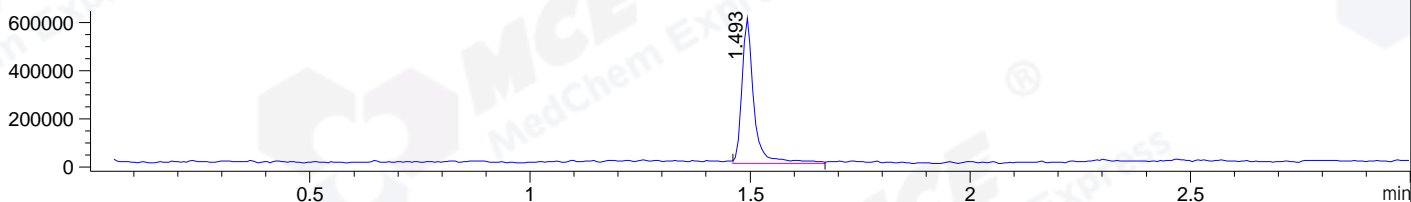
DAD1 B, Sig=214,4 Ref=off



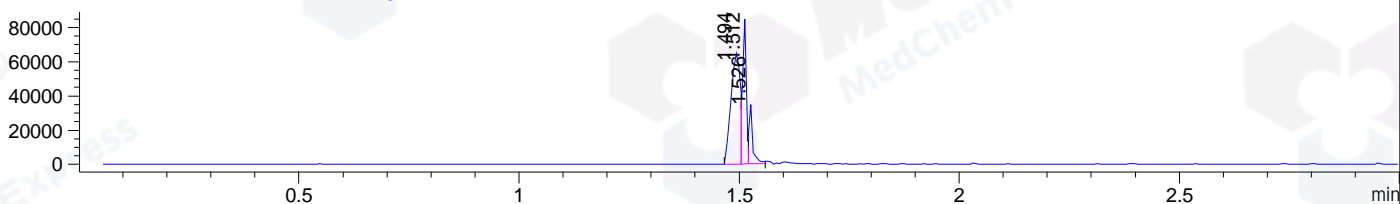
DAD1 C, Sig=254,4 Ref=off



MSD1 TIC, MS File ES-API, Pos, Scan, Frag: 70



Ion 427.5255, MSD1 427.5255, Target Mass 426.5255 +H Positive, EIC=427.23:428.23



Integration Results for DAD1 B, Sig=214,4 Ref=off

RetTim	Width	Area	Height	Area%	MS (+)
1.40	0.02	1.76	1.62	0.18	265
1.48	0.02	974.48	883.07	99.65	214
1.55	0.02	1.66	1.82	0.17	427

Integration Results for DAD1 C, Sig=254,4 Ref=off

RetTim	Width	Area	Height	Area%	MS (+)
1.40	0.02	1.40	1.26	0.14	265
1.48	0.02	978.82	938.57	99.74	214
1.55	0.01	1.19	1.40	0.12	427

Integration Results for MSD1 TIC, MS File

RetTim	Width	Area	Height	Area%	MS (+)
1.49	0.03	1161118.88	603186.19	100.00	214

Ret. Time: 1.49

<<<< POSITIVE SPECTRA >>>>

ES-API Positive

