

File ..1\DATA\2019\20190430\564\BIZ2019-429-CXL1.D Tgt Mass (CHM):

Injection Date : 30 Apr 19 10:31 am +0800 Seq. Line : 11

Sample Name : BIZ2019-429-CXL1 Location : PL-D-03

Acq. Operator : LQ\_1052 Inj : 1

Spec. Reported : MS Integration Inj Volume : 1 ul

Acq. Method : D:\Chem32\1\data\2019\20190430\564\1-POS-3MIN-1.M

Analysis Method : D:\CHEM32\1\DATA\2019\20190430\564\1-POS-3MIN-1.M

Catalog No : HY-125381 Batch#40754

Method Info : Mobile Phase: A: water(0.01%TFA) B:ACN(0.01%TFA)

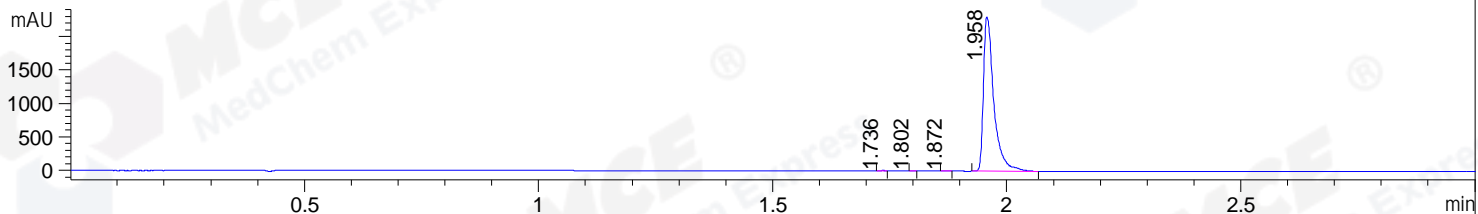
Gradient: 5% to 95%B within 1.3 min

Flow Rate :1.8ml/min

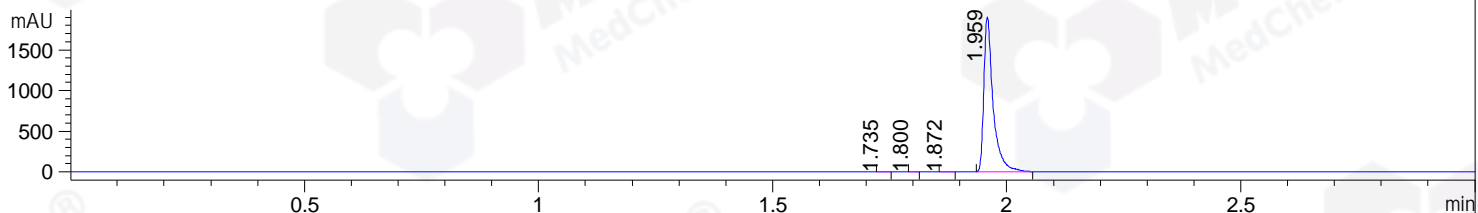
Column :SunFire C18, 4.6\*50mm,3.5um A-RP-322

Oven Temperature : 45

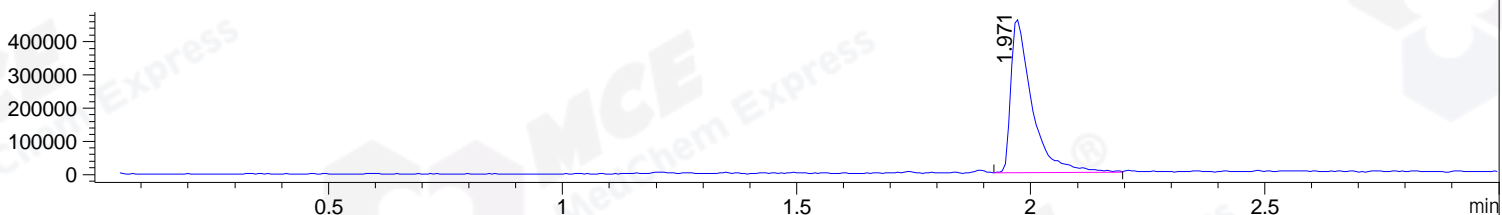
DAD1 B, Sig=214,4 Ref=off



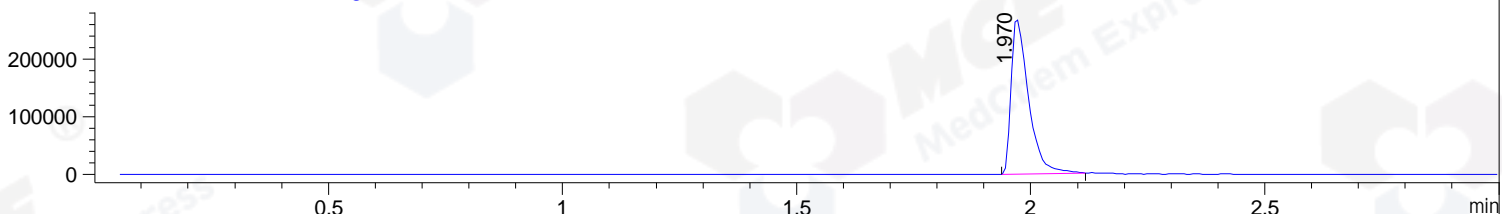
DAD1 C, Sig=254,4 Ref=off



MSD1 TIC, MS File ES-API, Pos, Scan, Frag: 70



Ion 487.2, MSD1 487.2, Target Mass 486.2 +H Positive, EIC=486.9:487.9



Integration Results for DAD1 B, Sig=214,4 Ref=off

RetTim	Width	Area	Height	Area%	MS (+)
1.74	0.01	2.12	2.69	0.06	ND
1.80	0.01	0.54	0.88	0.02	ND
1.87	0.01	2.61	3.00	0.07	ND
1.96	0.02	3566.02	2306.96	99.85	487

Integration Results for DAD1 C, Sig=254,4 Ref=off

RetTim	Width	Area	Height	Area%	MS (+)
1.74	0.02	1.32	1.40	0.05	ND
1.80	0.01	0.57	0.73	0.02	ND
1.87	0.02	2.17	2.29	0.08	473
1.96	0.02	2639.87	1902.77	99.85	487

Integration Results for MSD1 TIC, MS File

RetTim	Width	Area	Height	Area%	MS (+)
1.97	0.04	1450063.25	463225.03	100.00	487

Ret. Time: 1.97

<<<< POSITIVE SPECTRA >>>>

ES-API Positive

