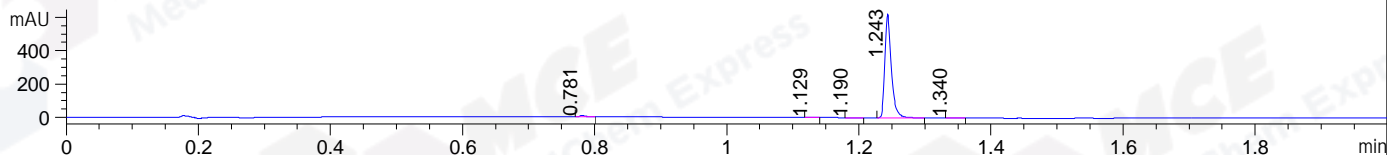
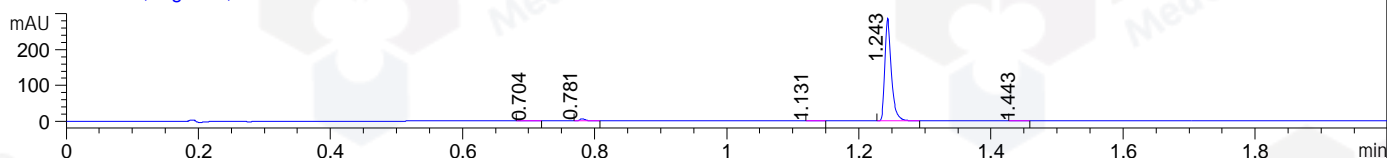


File ..119 2020-01-19 08-43-01\MXY7444-009-1_2_1.D Tgt Mass (CHM):
 Injection Date : 19 Jan 20 4:41 pm +0800 Seq. Line : 107
 Sample Name : MXY7444-009-1_2 Location : P1-F-05
 Acq. Operator : SYSTEM Inj : 1
 Spec. Reported : MS Integration Inj Volume : 0.6 ul
 Acq. Method : D:\LCMS03\Data\20200119\20200119 2020-01-19 08-43-01\1-POS-UPLC2.0MIN(0.8ML)
 Analysis Method : D:\LCMS03\Data\20200119\20200119 2020-01-19 08-43-01\1-POS-UPLC2.0MIN(0.8ML) .1
 Catalog No : HY-125877 Batch#59690
 Method Info : Mobile Phase: A: water(0.01%TFA) B:ACN(0.01%TFA)
 Gradient: 5% to 95%B within 0.6 min
 Flow Rate : 0.8ml/min
 Column : Poroshell 120 EC- C18, 2.1*50mm,1.9um A-RP-463
 Oven Temperature : 45C

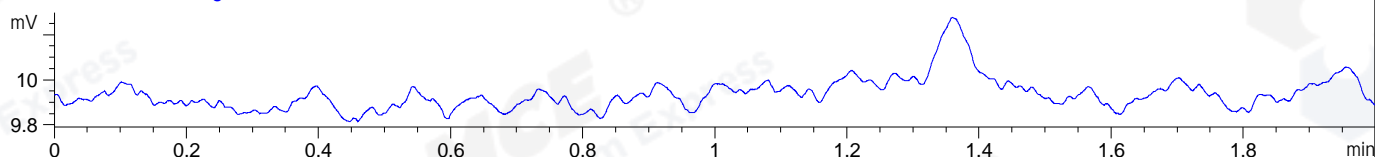
DAD1 A, Sig=214,4 Ref=off



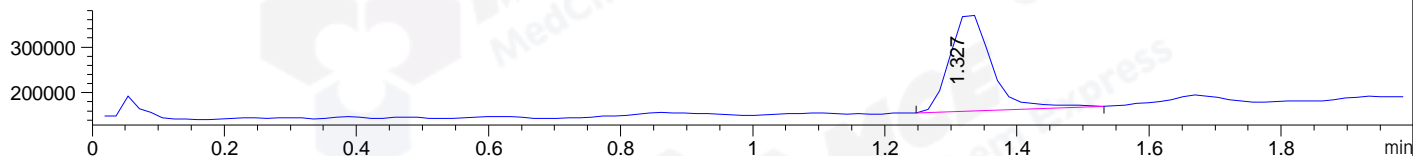
DAD1 B, Sig=254,4 Ref=off



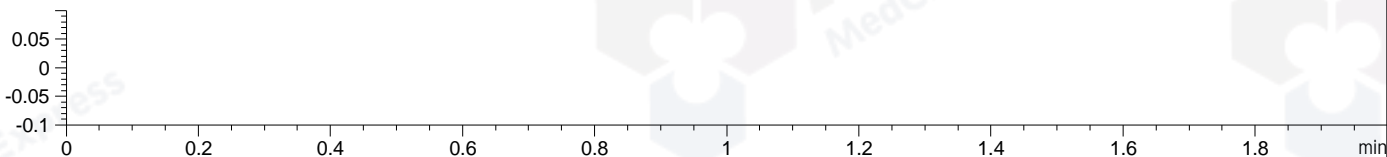
ELS1 A, ELSD Signal



MSD1 TIC, MS File ES-API, Pos, Scan, Frag: 70



Ion 1, MSD1 1, Target Mass 0 +H Positive, EIC=0.7:1.7



Integration Results for DAD1 A, Sig=214,4 Ref=off

RetTim	Width	Area	Height	Area%	MS (+)
0.78	0.01	4.49	7.69	1.04	114
1.13	0.01	0.26	0.42	0.06	114
1.19	0.02	0.25	0.25	0.06	114
1.24	0.01	425.33	621.86	98.76	114
1.34	0.01	0.34	0.49	0.08	911

Integration Results for DAD1 B, Sig=254,4 Ref=off

RetTim	Width	Area	Height	Area%	MS (+)
0.70	0.02	0.22	0.21	0.11	145
0.78	0.01	3.09	5.14	1.55	114
1.13	0.02	0.28	0.22	0.14	114
1.24	0.01	195.46	286.88	98.13	114
1.44	0.01	0.13	0.17	0.06	114

Integration Results for ELS1 A, ELSD Signal

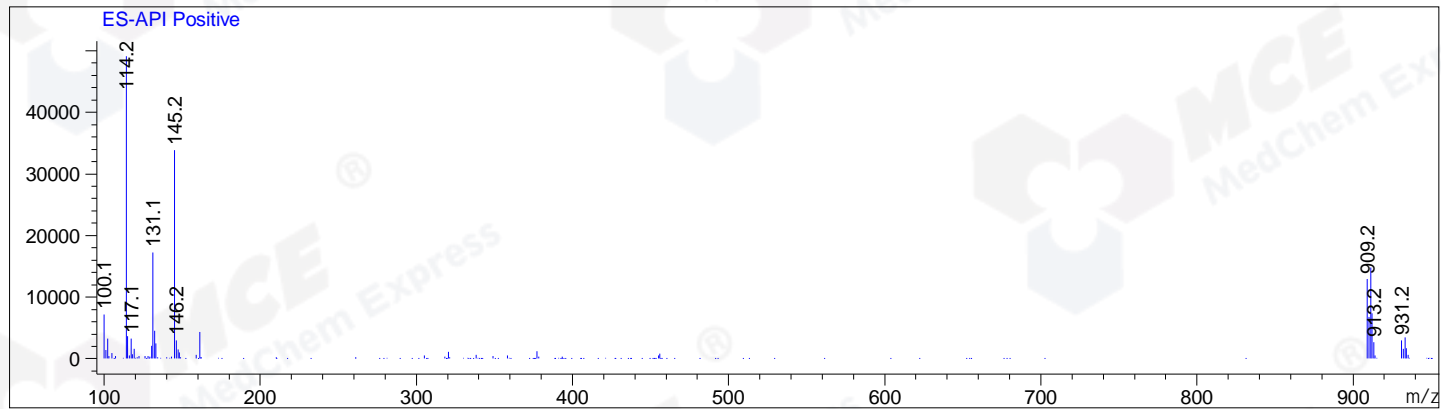
RetTim	Width	Area	Height	Area%	MS (+)
--------	-------	------	--------	-------	--------

Integration Results for MSD1 TIC, MS File

RetTime	Width	Area	Height	Area%	MS(+)
1.33	0.07	929416.25	217032.81	100.00	114

Ret. Time: 1.33

<<<< POSITIVE SPECTRA >>>>



*** End of Report ***