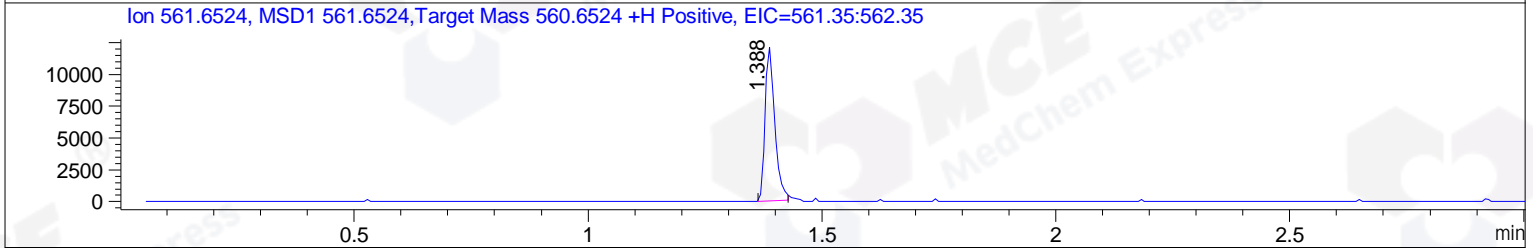
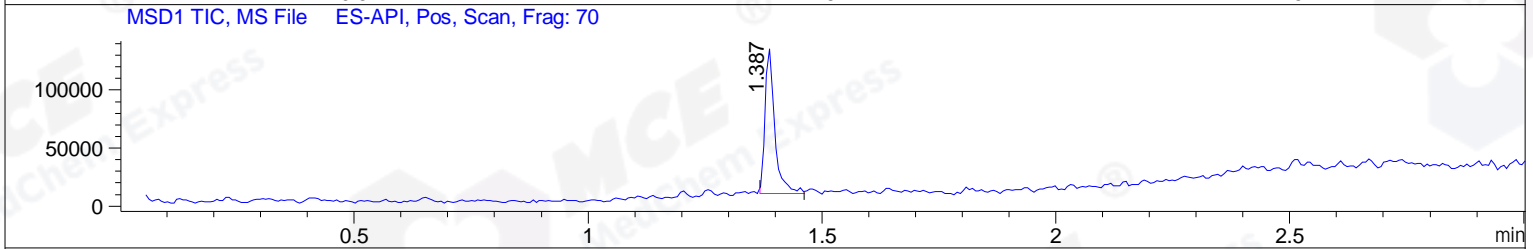
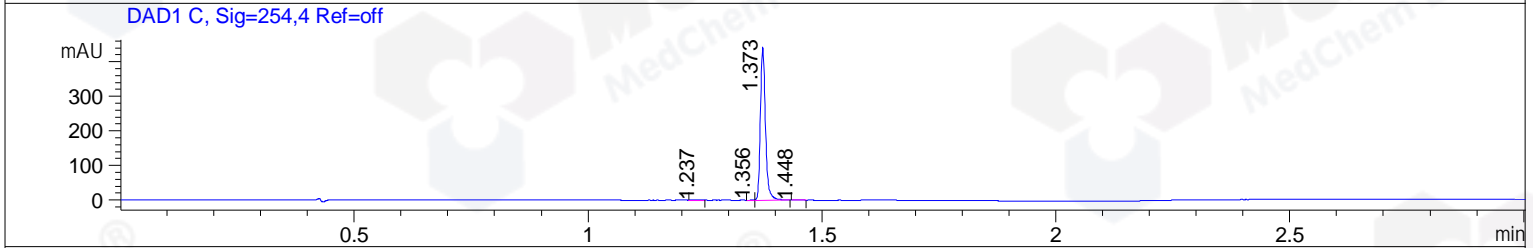
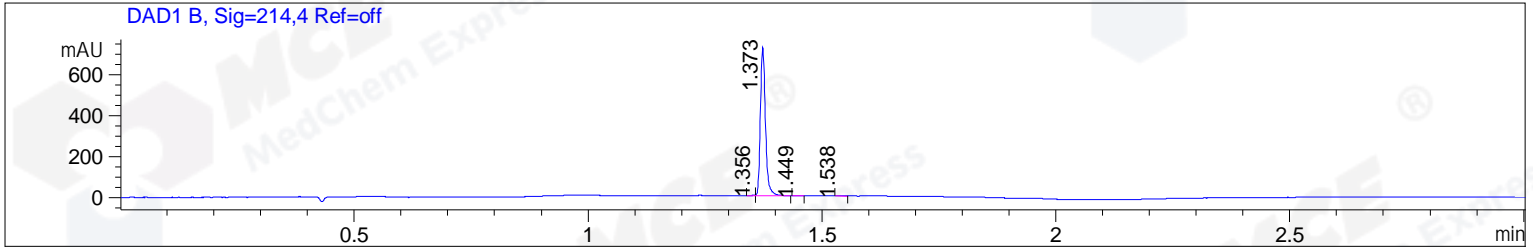


File ..\DATA\2019\20190830\713\CPK2019-830-23285.D Tgt Mass (CHM):
 Injection Date : 30 Aug 19 4:36 pm +0800 Seq. Line : 23
 Sample Name : CPK2019-830-23285 Location : P1-C-05
 Acq. Operator : ZJ_1432 Inj : 1
 Spec. Reported : MS Integration Inj Volume : 1 ul
 Acq. Method : D:\Chem32\1\data\2019\20190830\713\1-POS-3MIN.M
 Analysis Method : D:\CHEM32\1\DATA\2019\20190830\713\1-POS-3MIN.M
 Catalog No : HY-12678 Batch#23285
 Method Info : Mobile Phase: A: water(0.01%TFA) B:ACN(0.01%TFA)
 Gradient: 5% to 95%B within 1.3 min
 Flow Rate :1.8ml/min
 Column :SunFire C18, 4.6*50mm,3.5um A-RP-433
 Oven Temperature : 45



Integration Results for DAD1 B, Sig=214,4 Ref=off

RetTim	Width	Area	Height	Area%	MS (+)
1.36	0.01	1.74	3.46	0.32	ND
1.37	0.01	545.35	725.80	99.11	281
1.45	0.01	1.14	1.43	0.21	281
1.54	0.01	2.03	2.47	0.37	141

Integration Results for DAD1 C, Sig=254,4 Ref=off

RetTim	Width	Area	Height	Area%	MS (+)
1.24	0.02	0.67	0.63	0.20	ND
1.36	0.01	0.70	1.72	0.21	ND
1.37	0.01	332.04	443.31	99.32	281
1.45	0.02	0.89	0.99	0.27	281

Integration Results for MSD1 TIC, MS File

RetTim	Width	Area	Height	Area%	MS (+)
1.39	0.02	182261.38	125662.45	100.00	281

Ret. Time: 1.39

<<<< POSITIVE SPECTRA >>>>

ES-API Positive

