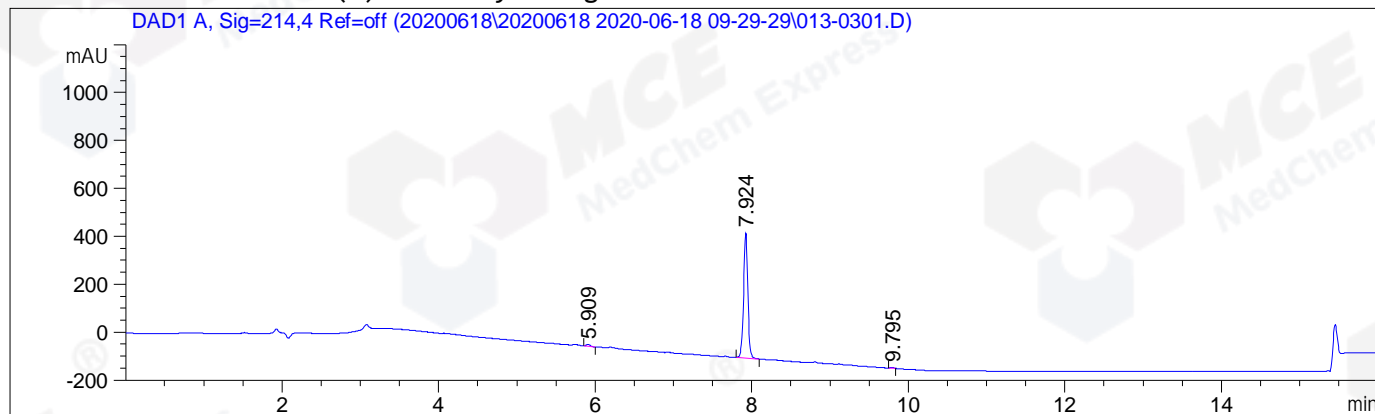


=====
Acq. Operator : zqq_793 Seq. Line : 3
Acq. Instrument : HPLC-12 Location : 13
Injection Date : 6/18/2020 10:25:15 Inj : 1
 Inj Volume: 5.000 µl
Different Inj Volume from Sample Entry! Actual Inj Volume : 2.000 µl
Acq. Method : D:\Chem32\1\Data\20200618\20200618 2020-06-18 09-29-29\10-90A 214NM.M
Last changed : 6/18/2020 9:29:29 by zqq_793
Analysis Method : D:\Chem32\1\Data\20200618\20200618 2020-06-18 09-29-29\10-90A 214NM.M (Sequence Method)
Last changed : 6/18/2020 13:49:39 by zqq_793
 (modified after loading)
Catalog No : HY-12683 A-RP-536
=====

Additional Info : Peak(s) manually integrated



=====
Area Percent Report
=====

Sorted By : Signal
Multiplier : 1.0000
Dilution : 1.0000
Do not use Multiplier & Dilution Factor with ISTDs

Signal 1: DAD1 A, Sig=214,4 Ref=off

Peak #	RetTime [min]	Type	Width [min]	Area [mAU*s]	Height [mAU]	Area %
1	5.909	VB	0.0508	29.17391	8.78236	1.4293
2	7.924	MF R	0.0635	2001.90662	525.37872	98.0795
3	9.795	MM R	0.0471	10.02640	3.54427	0.4912

Totals : 2041.10693 537.70536

=====
*** End of Report ***
=====