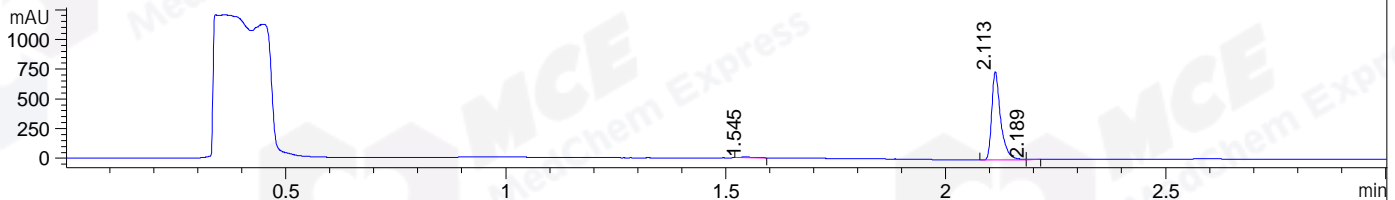


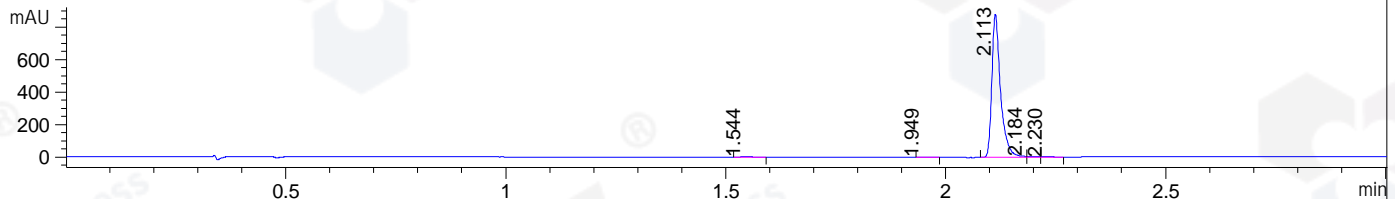
File ..\DATA\2019\20191111\758\BIZ2019-N08-SCH1-.D Tgt Mass (CHM):

Injection Date : 11 Nov 19 12:23 pm +0800 Seq. Line : 40  
 Sample Name : BIZ2019-N08-SCH1 Location : P1-A-07  
 Acq. Operator : ZJ\_1432 Inj : 1  
 Spec. Reported : MS Integration Inj Volume : 5 ul  
 Acq. Method : D:\Chem32\1\data\2019\20191111\758\1-POS-3MIN.M  
 Analysis Method : D:\CHEM32\1\DATA\2019\20191111\758\1-POS-3MIN.M  
 Catalog No : HY-12703 Batch#51718  
 Method Info : Mobile Phase: A: water(0.01%TFA) B:ACN(0.01%TFA)  
 Gradient: 5% to 95%B within 1.3 min  
 Flow Rate :1.8ml/min  
 Column :SunFire C18, 4.6\*50mm,3.5um A-RP-433  
 Oven Temperature : 45

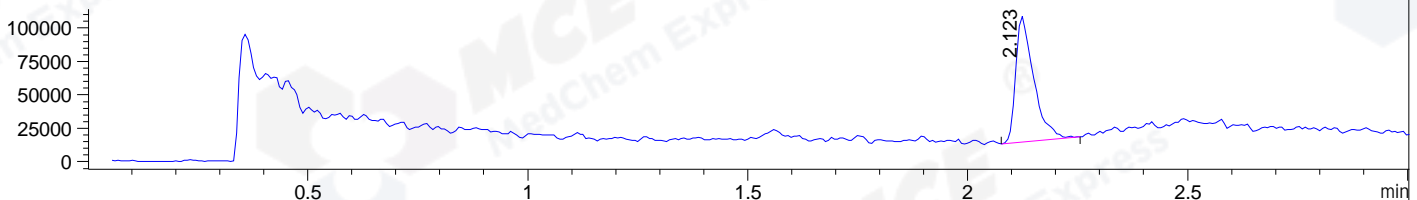
DAD1 B, Sig=214,4 Ref=off



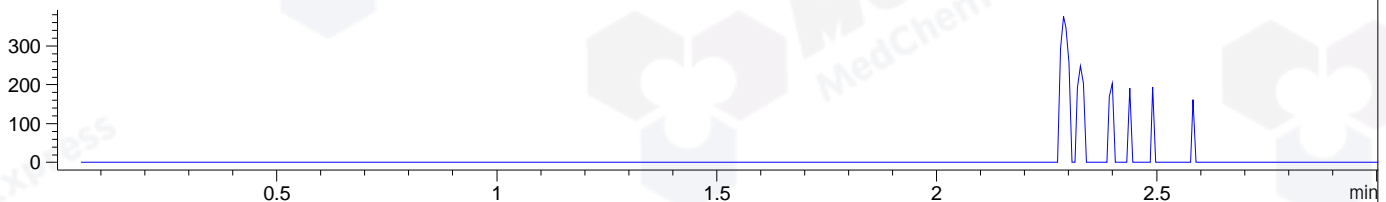
DAD1 C, Sig=254,4 Ref=off



MSD1 TIC, MS File ES-API, Pos, Scan, Frag: 70



Ion 424, MSD1 424, Target Mass 423 +H Positive, EIC=423.7:424.7



Integration Results for DAD1 B, Sig=214,4 Ref=off

RetTim	Width	Area	Height	Area%	MS (+)
1.54	0.03	11.68	5.71	1.10	157
2.11	0.02	1044.93	742.29	98.55	157
2.19	0.02	3.67	3.54	0.35	157

Integration Results for DAD1 C, Sig=254,4 Ref=off

RetTim	Width	Area	Height	Area%	MS (+)
1.54	0.04	4.61	2.02	0.37	157
1.95	0.02	2.78	2.05	0.23	157
2.11	0.02	1215.76	882.12	98.67	157
2.18	0.02	5.78	5.01	0.47	157
2.23	0.03	3.16	1.96	0.26	157

Integration Results for MSD1 TIC, MS File

RetTim	Width	Area	Height	Area%	MS (+)
2.12	0.04	268938.03	94432.45	100.00	157

Ret. Time: 2.12

<<<< POSITIVE SPECTRA >>>>

ES-API Positive

