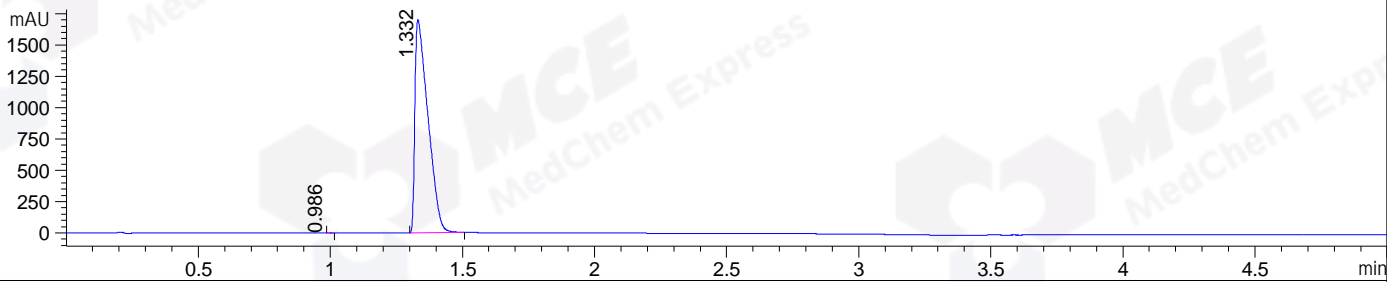
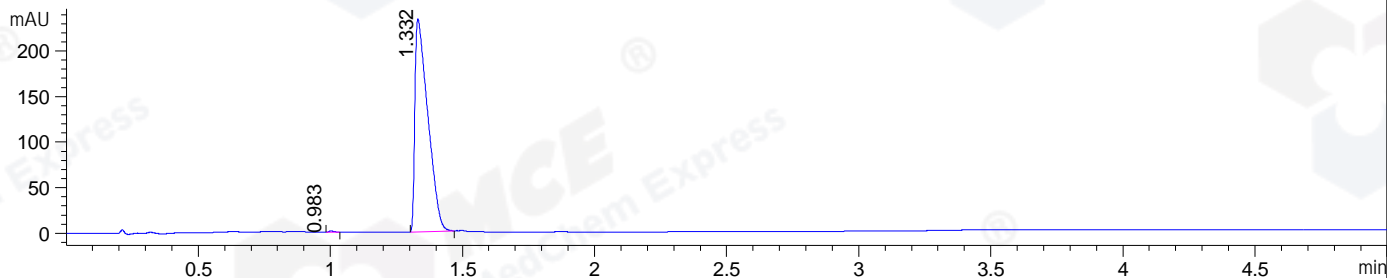


File ..22-08-29\NRL14541-002-P-UPLC-MS-04-029382.D Tgt Mass (EZ):
 Injection Date : 29-Aug-22, 14:00:17 Seq. Line : 0
 Sample Name : NRL14541-002-P Location : P2-A-02
 Acq. Operator : LY_2278 Inj : 1
 Spec. Reported : MS Integration Inj Volume : 0.4 ul
 Acq. Method : E:\Chem32\1\Methods\1-POS-UPLC5.0MIN(0.8ML)-(150-2000).M
 Analysis Method : E:\CHEM32\1\METHODS\1-POS-UPLC5.0MIN(0.8ML)-(150-2000).M
 CAS NO. : 1644670-37-0 WalkUp method: '1-POS-5MIN' Project: LD1489 Target:
 Method Info : Mobile Phase: A: water(0.01%TFA) B:ACN(0.01%TFA)
 Gradient: 5% to 95%B within 3 min
 Flow Rate : 0.8ml/min
 Column :Poroshell 120 EC- C18, 2.1*50mm,1.9um
 Oven Temperature : 45C

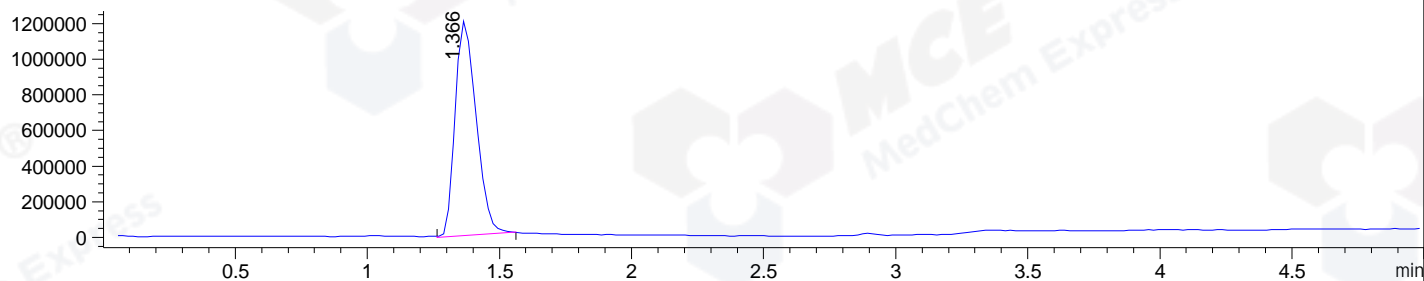
DAD1 A, Sig=214,4 Ref=off



DAD1 B, Sig=254,4 Ref=off



MSD1 TIC, MS File ES-API, Pos, Scan, Frag: 70



Integration Results for DAD1 A, Sig=214,4 Ref=off

RetTim	Width	Area	Height	Area%	MS(+)
0.99	0.02	1.38	0.06	0.02	327
1.33	0.06	5828.15	1698.79	99.98	423

Integration Results for DAD1 B, Sig=254,4 Ref=off

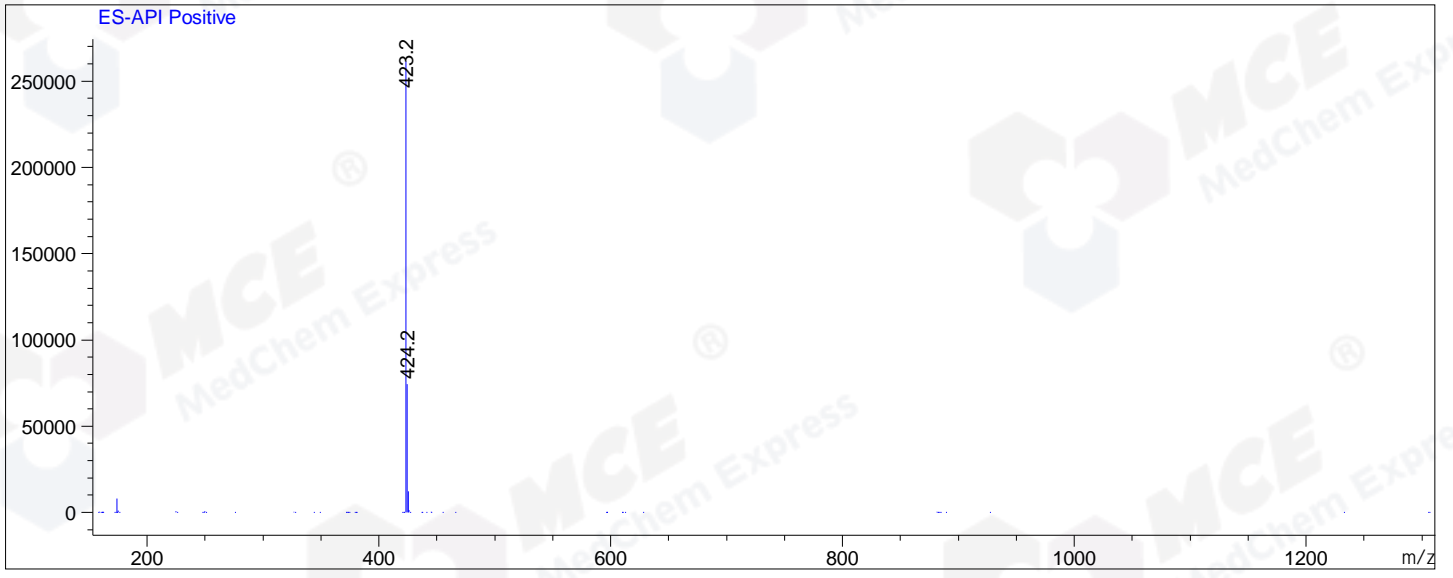
RetTim	Width	Area	Height	Area%	MS(+)
0.98	0.02	1.78	0.03	0.22	327
1.33	0.06	795.83	233.71	99.78	423

Integration Results for MSD1 TIC, MS File

RetTim	Width	Area	Height	Area%	MS(+)
1.37	0.09	6625764.00	1218731.13	100.00	423

Ret. Time: 1.37

<<<< POSITIVE SPECTRA >>>>



*** End of Report ***