

File ..\2018\20180227\20180227\CPK2018-223-15443.D Tgt Mass (CHM):

Injection Date : 27 Feb 18 2:34 pm +0800 Seq. Line : 70

Sample Name : CPK2018-223-15443 Location : P1-E-04

Acq. Operator : SYSTEM Inj : 1

Spec. Reported : MS Integration Inj Volume : 1 ul

Acq. Method : D:\LCMS03\Data\2018\20180227\20180227\1-POS-3MIN.M

Analysis Method : D:\LCMS03\Data\2018\20180227\20180227\1-POS-3MIN.M

Catalog No : HY-12743A Batch#15443

Method Info : Mobile Phase: A: water(0.01%TFA) B:ACN(0.01%TFA)

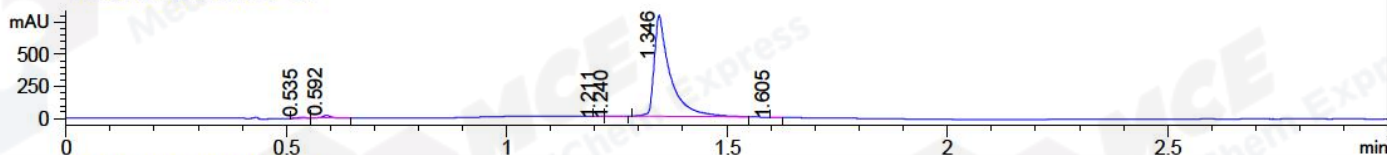
Gradient: 5% to 95%B within 1.3 min

Flow Rate :1.8ml/min

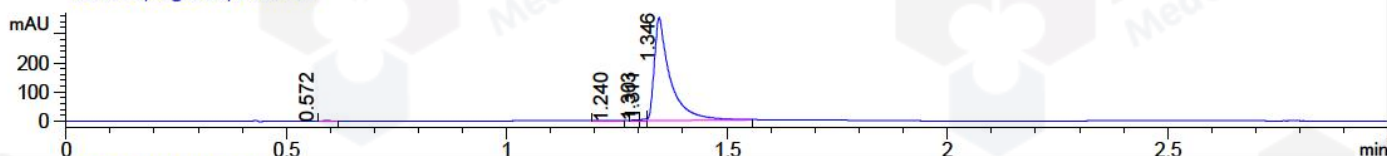
Column :SunFire C18, 4.6*50mm,3.5um A-RP-186

Oven Temperature : 45C

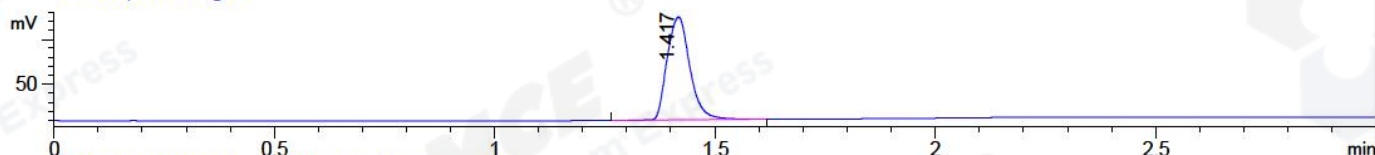
DAD1 A, Sig=214,4 Ref=off



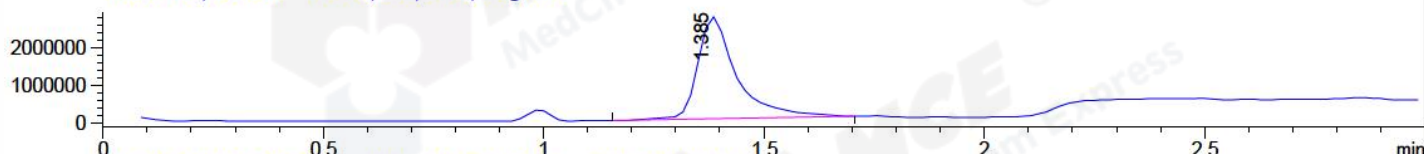
DAD1 B, Sig=254,4 Ref=off



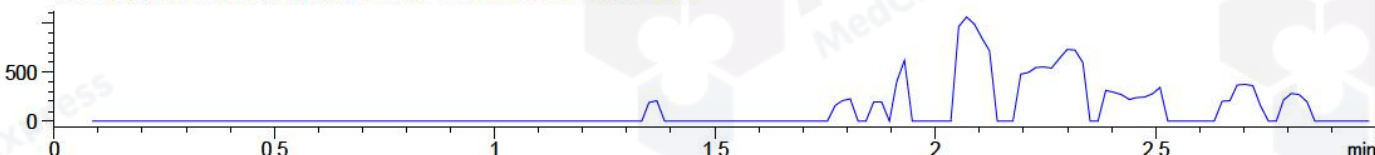
ELS1 A, ELSD Signal



MSD1 TIC, MS File ES-API, Pos, Scan, Frag: 70



Ion 642.7, MSD1 642.7, Target Mass 641.7 +H Positive, EIC=642.4:643.4



Integration Results for DAD1 A, Sig=214,4 Ref=off

RetTim	Width	Area	Height	Area%	MS (+)
0.54	0.02	8.72	7.33	0.43	102
0.59	0.02	23.15	18.64	1.15	102
1.21	0.01	0.28	0.37	0.01	233
1.24	0.03	3.86	2.38	0.19	553
1.35	0.04	1983.27	783.54	98.19	569
1.61	0.02	0.60	0.59	0.03	569

Integration Results for DAD1 B, Sig=254,4 Ref=off

RetTim	Width	Area	Height	Area%	MS (+)
0.57	0.02	1.45	-0.04	0.16	102
1.24	0.03	1.61	0.76	0.18	233
1.30	0.01	1.61	1.91	0.18	553
1.31	0.01	3.53	5.50	0.40	569
1.35	0.04	873.32	350.52	99.07	569

Integration Results for ELS1 A, ELSD Signal

1.42	0.06	412.16	114.96	100.00	569
------	------	--------	--------	--------	-----

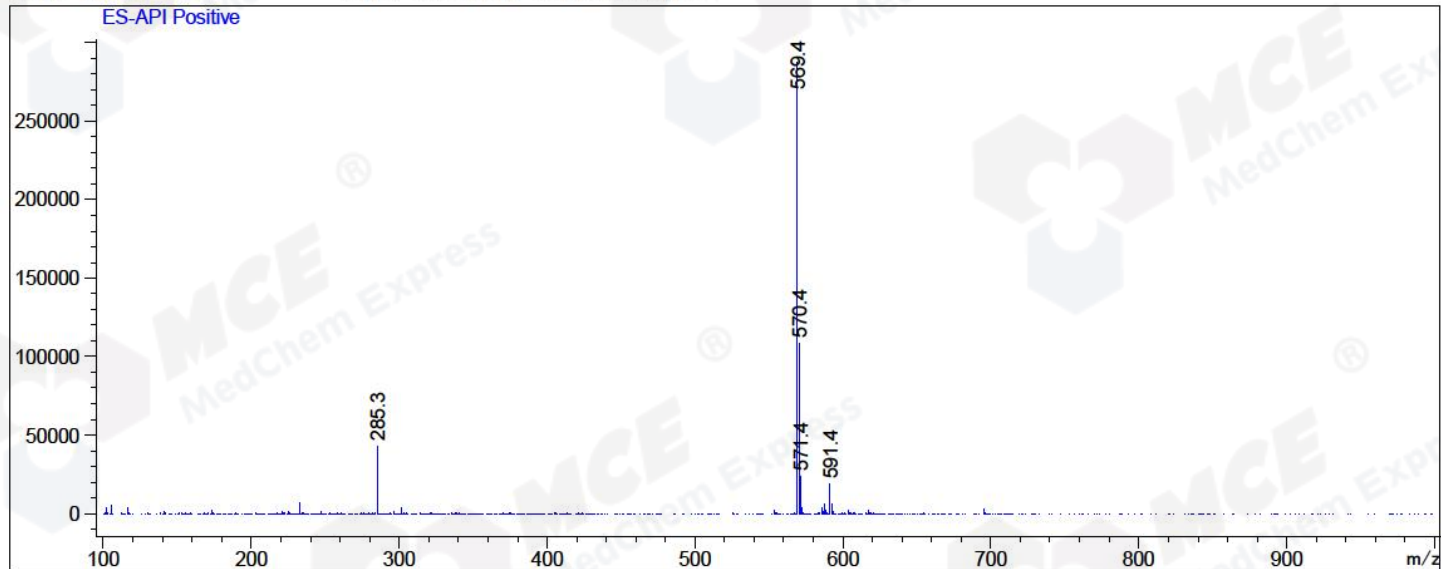
Integration Results for MSD1 TIC, MS File

RetTim	Width	Area	Height	Area%	MS(+)
1.38	0.09	16589219.00	2712111.00	100.00	569

RetTim	Width	Area	Height	Area%	MS(+)
--------	-------	------	--------	-------	-------

Ret. Time: 1.38

<<<< POSITIVE SPECTRA >>>>



*** End of Report ***