

File ..\DATA\2019\20190415\560\CPK2019-415-23518.D Tgt Mass (CHM):

Injection Date : 15 Apr 19 4:47 pm +0800 Seq. Line : 11

Sample Name : CPK2019-415-23518 Location : P2-E-09

Acq. Operator : LQ_1052 Inj : 1

Spec. Reported : MS Integration Inj Volume : 1 ul

Acq. Method : D:\Chem32\1\data\2019\20190415\560\1-POS-3MIN-1.M

Analysis Method : D:\CHEM32\1\DATA\2019\20190415\560\1-POS-3MIN-1.M

Catalog No : HY-12789 Batch# 23518-20170214

Method Info : Mobile Phase: A: water(0.01%TFA) B:ACN(0.01%TFA)

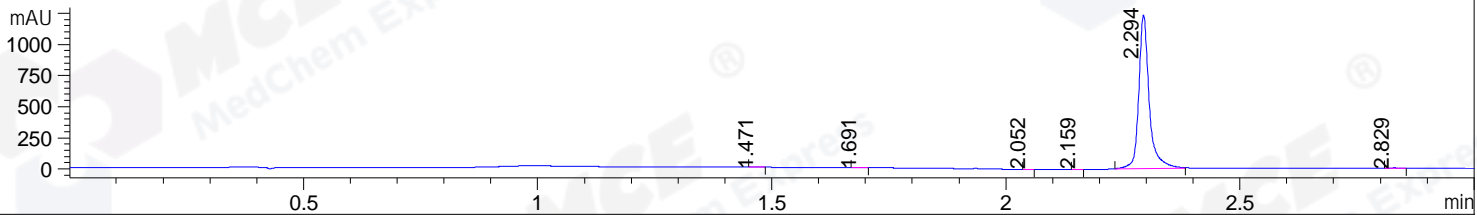
Gradient: 5% to 95%B within 1.3 min

Flow Rate :1.8ml/min

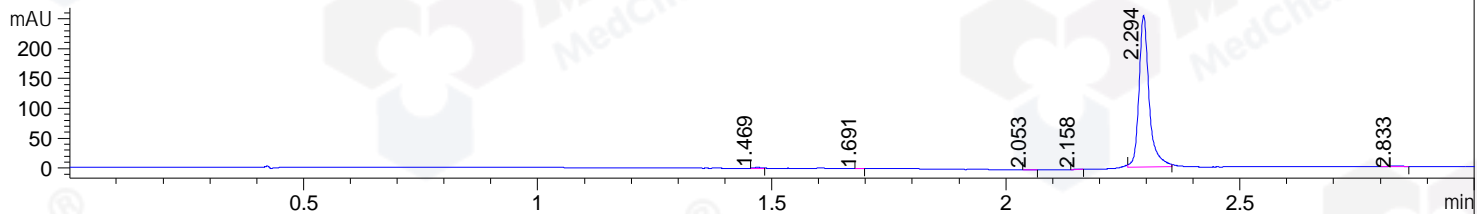
Column :SunFire C18, 4.6*50mm,3.5um A-RP-314

Oven Temperature : 45

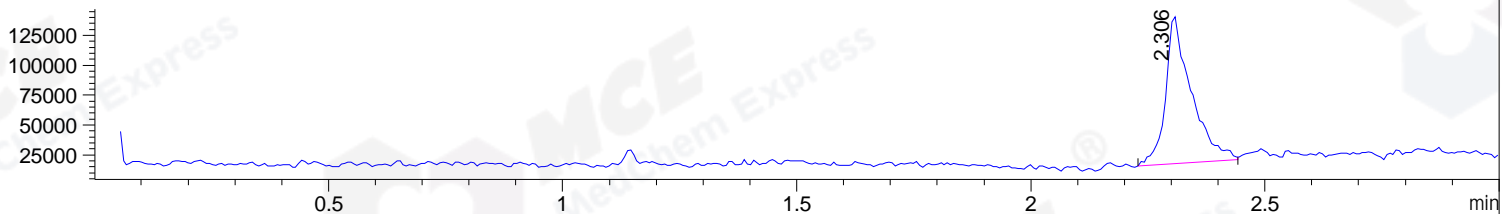
DAD1 B, Sig=214,4 Ref=off



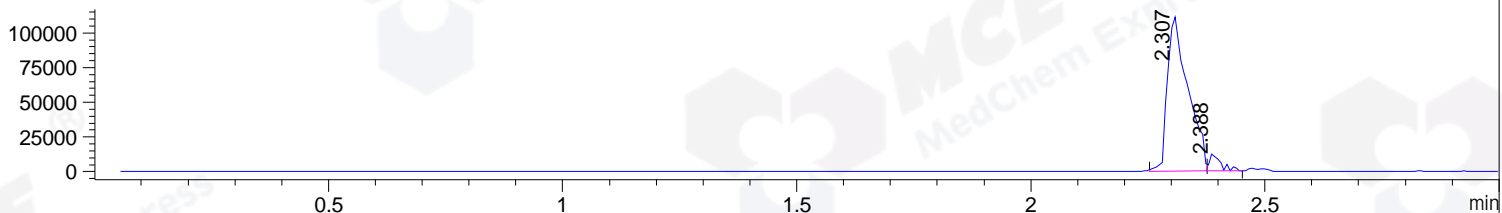
DAD1 C, Sig=254,4 Ref=off



MSD1 TIC, MS File ES-API, Pos, Scan, Frag: 70



Ion 458.5, MSD1 458.5, Target Mass 457.5 +H Positive, EIC=458.2:459.2



Integration Results for DAD1 B, Sig=214,4 Ref=off

RetTim	Width	Area	Height	Area%	MS (+)
1.47	0.02	1.11	0.88	0.06	160
1.69	0.02	2.29	2.30	0.12	160
2.05	0.01	0.70	0.90	0.04	160
2.16	0.02	1.23	1.34	0.06	160
2.29	0.02	1923.31	1235.09	99.57	458
2.83	0.03	3.03	1.90	0.16	160

Integration Results for DAD1 C, Sig=254,4 Ref=off

RetTim	Width	Area	Height	Area%	MS (+)
1.47	0.02	1.43	1.46	0.37	160
1.69	0.01	0.41	0.51	0.11	160
2.05	0.02	0.71	0.66	0.18	160
2.16	0.02	0.39	0.38	0.10	160
2.29	0.02	383.48	254.14	98.85	458
2.83	0.03	1.52	0.79	0.39	160

Integration Results for MSD1 TIC, MS File

RetTim	Width	Area	Height	Area%	MS (+)
2.31	0.05	473096.91	123759.72	100.00	458



Ret. Time: 2.31

<<<< POSITIVE SPECTRA >>>>

ES-API Positive

