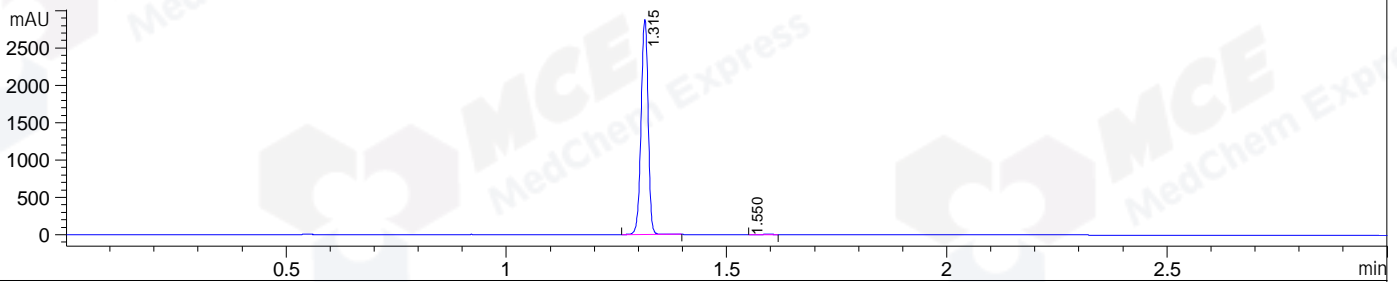
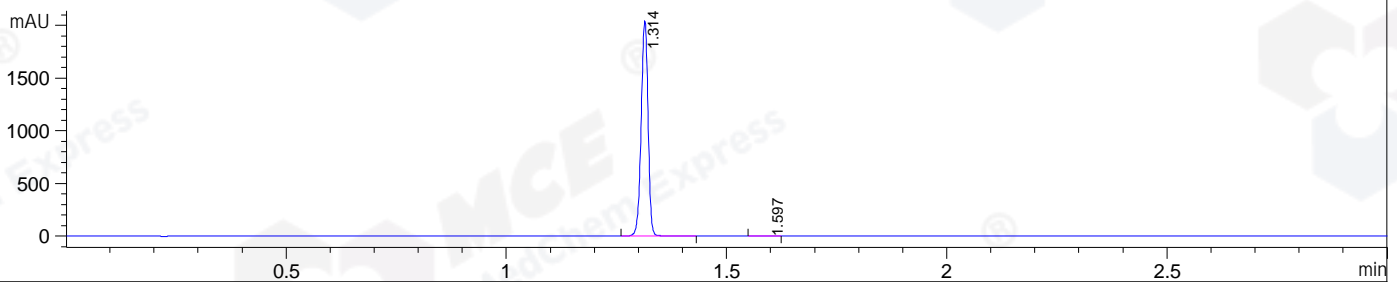


File E:\ChemStation\1\DATA\2023\2023-07\2023-07-14\BIZ2023-713-WLQ38-UPLC-MS-10-007929.D
 Injection Date : 14-Jul-23, 18:07:29 Tgt Mass(EZX) :
 Sample Name : BIZ2023-713-WLQ38 Location : P2-C-05
 Acq. Operator : LY_2278 Inj : 1
 Spec. Reported : MS Integration Inj Volume : 1 ul
 Acq. Method : E:\ChemStation\1\Methods\1-POS-UPLC3.0MIN(1.2)(150-1000).M
 Analysis Method : E:\CHEMSTATION\1\METHODS\1-POS-UPLC3.0MIN(1.2)(150-1000).M
 CAS NO. : 104206-82-8 WalkUp method: '1-POS-3MIN' Project: BIZ2023
 Method Info : Mobile Phase: A: water(0.01%TFA) B:ACN(0.01%TFA)
 Gradient: 5% to 95%B within 2.0 min
 Flow Rate :1.2ml/min
 Column :Shim-pack Scepter C18-120, 3.0*33mm,3um
 Oven Temperature : 45C

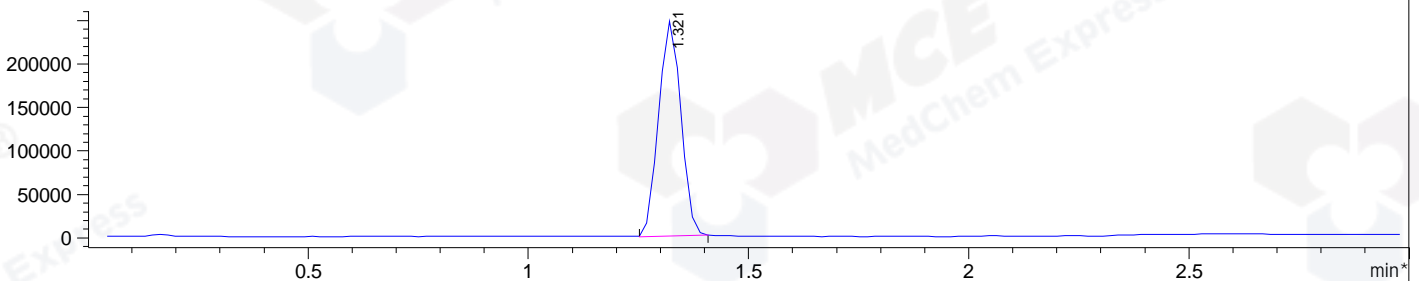
DAD1 A, Sig=214,4 Ref=off



DAD1 B, Sig=254,4 Ref=off



*MSD1 TIC, MS File ES-API, Pos, Scan, Frag: 70



Integration Results for DAD1 A, Sig=214,4 Ref=off

RetTim	Width	Area	Height	Area%
1.31	0.02	3211.29	2879.90	99.91
1.55	0.02	2.83	-0.00	0.09

Integration Results for DAD1 B, Sig=254,4 Ref=off

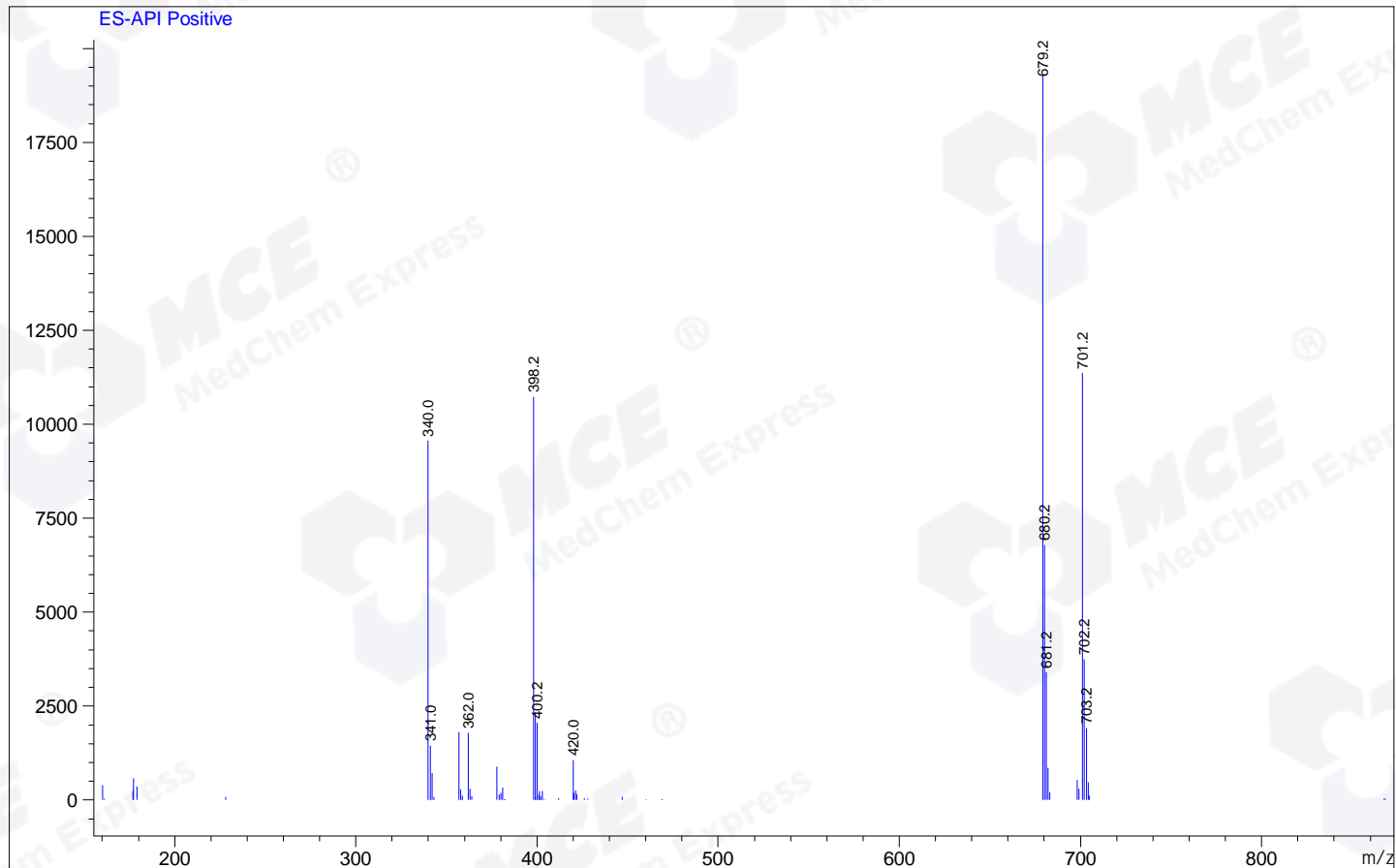
RetTim	Width	Area	Height	Area%
1.31	0.02	2216.30	2036.31	99.88
1.60	0.02	2.72	2.20	0.12

Integration Results for MSD1 TIC, MS File

RetTim	Width	Area	Height	Area%
1.32	0.06	874550.25	251383.06	100.00

Ret. Time: 1.32

<<<< POSITIVE SPECTRA >>>>



*** End of Report ***