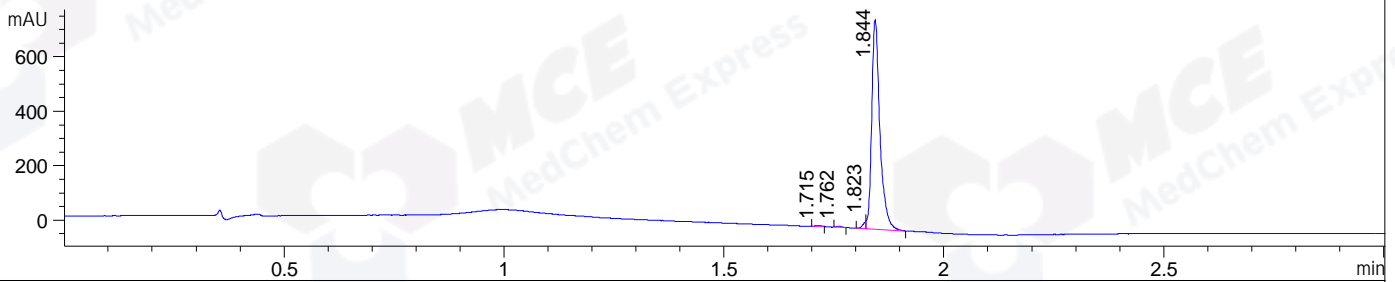


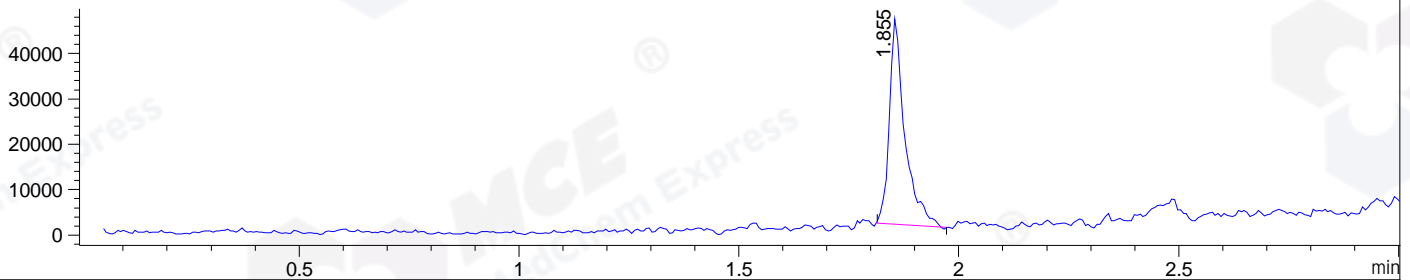
File ..\DATA\2019\20191106\757\BIZ2019-N05-CXL2-.D Tgt Mass (CHM):

Injection Date : 6 Nov 19 11:01 am +0800 Seq. Line : 26
 Sample Name : BIZ2019-N05-CXL2 Location : P1-C-06
 Acq. Operator : ZJ_1432 Inj : 1
 Spec. Reported : MS Integration Inj Volume : 1 ul
 Acq. Method : D:\Chem32\1\data\2019\20191106\757\1-POS-3MIN.M
 Analysis Method : D:\CHEM32\1\DATA\2019\20191106\757\1-POS-3MIN.M
 Catalog No : HY-128588 Batch#51792
 Method Info : Mobile Phase: A: water(0.01%TFA) B:ACN(0.01%TFA)
 Gradient: 5% to 95%B within 1.3 min
 Flow Rate :1.8ml/min
 Column :SunFire C18, 4.6*50mm,3.5um A-RP-433
 Oven Temperature : 45

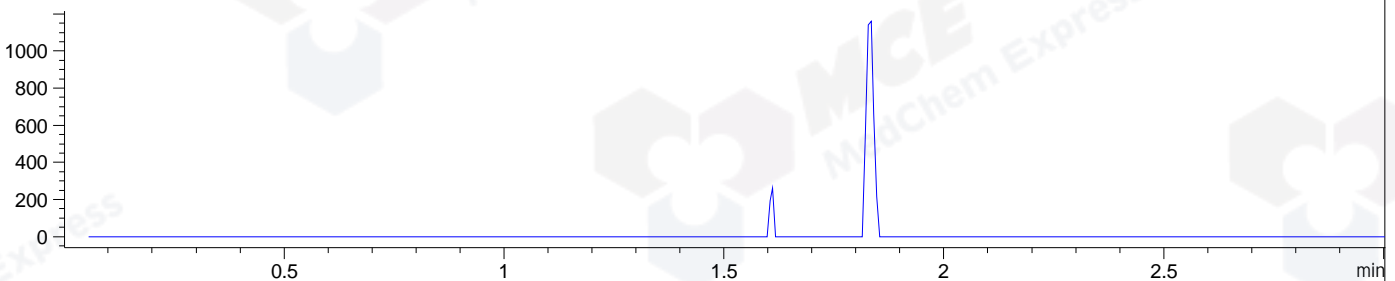
DAD1 B, Sig=214,4 Ref=off



MSD1 TIC, MS File ES-API, Pos, Scan, Frag: 70



Ion 600.07, MSD1 600.07, Target Mass 599.07 +H Positive, EIC=599.77:600.77



Integration Results for DAD1 B, Sig=214,4 Ref=off

RetTim	Width	Area	Height	Area%	MS (+)
1.71	0.02	2.89	2.97	0.28	ND
1.76	0.01	3.14	3.71	0.31	ND
1.82	0.01	13.74	26.55	1.35	ND
1.84	0.02	999.11	769.94	98.06	634

Integration Results for MSD1 TIC, MS File

RetTim	Width	Area	Height	Area%	MS (+)
1.86	0.03	110875.44	45415.07	100.00	634

Ret. Time: 1.86

<<<< POSITIVE SPECTRA >>>>

ES-API Positive

