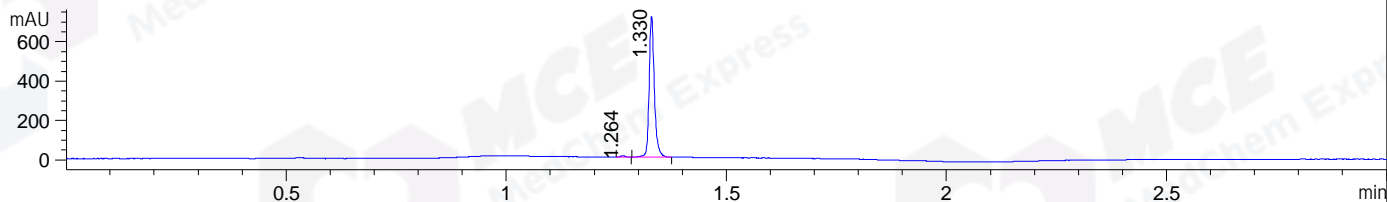
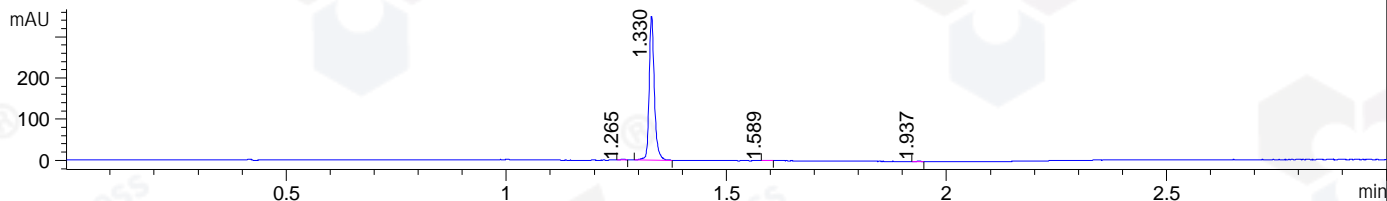


File ..ATA\2020\20200702\1024\CPK2020-630-31935-.D Tgt Mass (CHM):  
 Injection Date : 2 Jul 20 1:14 pm +0800 Seq. Line : 51  
 Sample Name : CPK2020-630-31935 Location : P1-B-01  
 Acq. Operator : ZJ\_1432 Inj : 1  
 Spec. Reported : MS Integration Inj Volume : 0.3 ul  
 Acq. Method : D:\Chem32\1\data\2020\20200702\1024\1-POS-3MIN.M  
 Analysis Method : D:\CHEM32\1\DATA\2020\20200702\1024\1-POS-3MIN.M  
 Catalog No : HY-12871B  
 Method Info : Mobile Phase: A: water(0.01%TFA) B:ACN(0.01%TFA)  
 Gradient: 5% to 95%B within 1.3 min  
 Flow Rate :1.8ml/min  
 Column :SunFire C18, 4.6\*50mm,3.5um A-RP-607  
 Oven Temperature : 45□

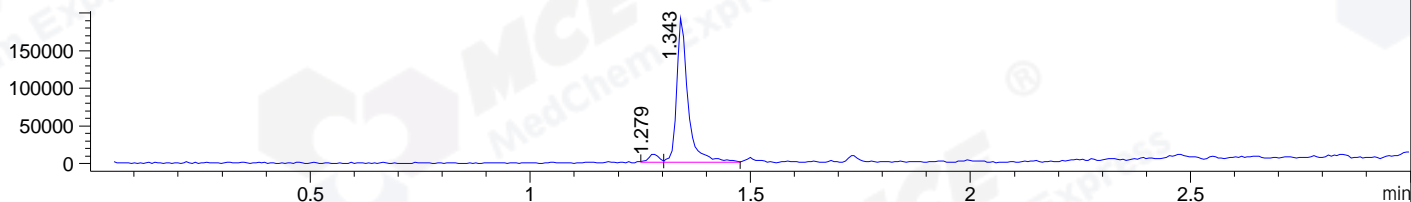
DAD1 B, Sig=214,4 Ref=off



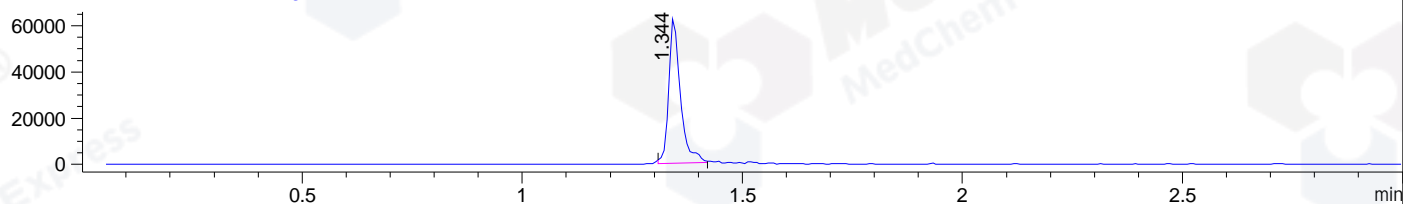
DAD1 C, Sig=254,4 Ref=off



MSD1 TIC, MS File ES-API, Pos, Scan, Frag: 70



Ion 388, MSD1 388, Target Mass 387 +H Positive, EIC=387.7:388.7



## Integration Results for DAD1 B, Sig=214,4 Ref=off

RetTim	Width	Area	Height	Area%	MS (+)
1.26	0.01	4.72	6.07	0.80	414
1.33	0.01	585.35	715.58	99.20	388

## Integration Results for DAD1 C, Sig=254,4 Ref=off

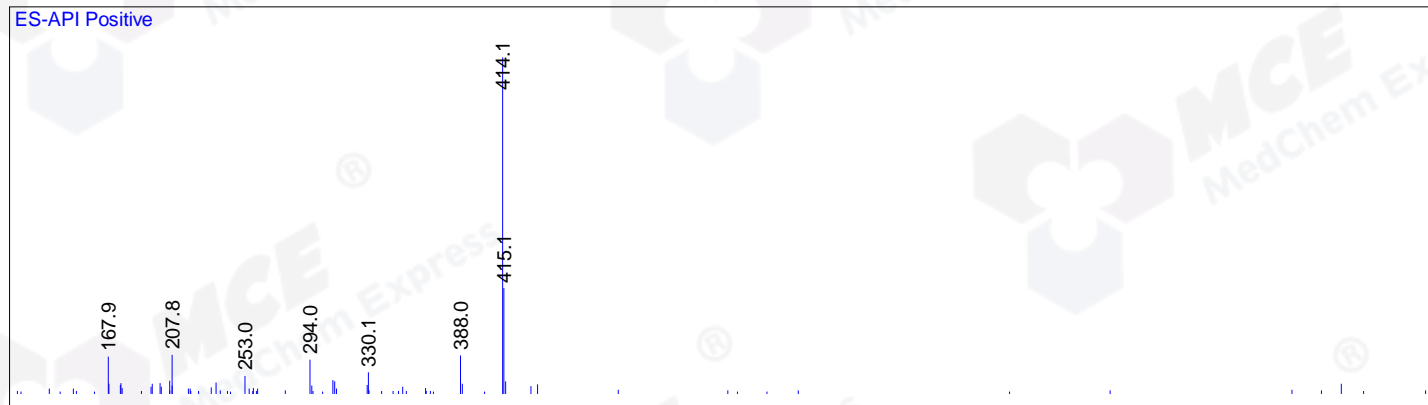
RetTim	Width	Area	Height	Area%	MS (+)
1.26	0.01	1.26	1.82	0.44	414
1.33	0.01	283.66	349.94	99.13	388
1.59	0.01	0.53	0.80	0.18	ND
1.94	0.01	0.71	0.84	0.25	ND

## Integration Results for MSD1 TIC, MS File

RetTim	Width	Area	Height	Area%	MS (+)
1.28	0.03	17759.88	11135.10	4.89	414
1.34	0.03	345253.09	192829.94	95.11	388

Ret. Time: 1.28

<<<< POSITIVE SPECTRA >>>>



Ret. Time: 1.34

